



forest dental

Affordable Excellence + Designer Friendly™



Forest is the undisputed growth leader over the last five years of the down economy...

Forest dares to be different with our two brand strategies of Affordable Excellence & Designer Friendly™.

I've always appreciated how cool and classy a car can be. Why not dental equipment? Taking the elements of dental equipment to the level of a beautiful car seemed natural. Dental equipment should be a little more exciting to look at and a lot more patient friendly.

After I purchased Forest in 2004, I began implementing these ideas and before long some of the special elements that make cars so alluring found their way into our dental equipment: many small details done well, rich paint and upholstery color, chrome accents and carbon fiber trim. Thus was born Affordable Excellence and Designer Friendly™ dental equipment.

Affordable Excellence reflects our focus on mirroring many of the expensive features of big name brands with even more precision of fit and finish and selling it for less. Designer Friendly™ signifies that we cater to the taste and style of our customers. Everyone knows color is important in any interior design. We are the only company in the industry that gives you the choice of nine paint colors enhanced with chrome accents and carbon fiber surface treatments. Simply stated, it's beautiful.

Before you build your new clinic or modernize your existing office, please insist that one of our authorized dealers show you the Forest product line. Our customers are quick to say the money they save on Forest, especially in this economy, is a very pleasant surprise. I tell them spending their savings on practice-enhancing technology versus essential equipment is simply smart business.

A handwritten signature in black ink that reads 'Hank Barton'.

Hank Barton, Owner

Affordable Excellence

A lot of little things done well is our primary focus at Forest. Before you make your next equipment purchase, take some time to compare Forest to any brand, regardless of price. Our quality is unmatched. And the money you save on Forest chairs, lights, delivery systems and stools goes a long way toward other practice enhancing investments. **Simply smart business.**



1 Headrest



2 Chair Arm Rest



5 Vertical Post with Monitor Arm



6 Chair Mount Adapter & Pivot Delivery Arm

1 Headrest

- Stainless Steel Headrest Shaft
 - Powder Coated Aluminum Headrest Housing
 - Chromed Aluminum Release Button
 - Double Articulation
- Metal VS Plastic Means Long Life & Easy Function

2 Chair Arm Rest

- One-Piece Machined & Polished Stainless Steel Arm Support
 - Chromed Aluminum Release Button
- Unique One-Piece Construction Withstands Extreme Weight
Button Release Drops Arm Down VS Out To Save Room

5 Vertical Post With Monitor Arm

- Aluminum Horizontal Monitor Arm
 - Spring Steel Internal Lock Ring
 - Steel Vertical Delivery Post
- Tight Tolerances Because of Precise Machining
Perfect Fit Eliminates Sag & Gaps for Great Function

6 Chair Mount Adapter & Pivot Delivery Arm

- Cast Iron Monocoque Chair Adapter
 - Needle Roller Bearings
- Chair Adapter Has Superior Rigidity VS Flat Steel
Easy To Position Delivery & Light Arms



3 Pivot Points



4 Delivery Arms



7 Metal Control Head Chassis on 7000 Series



8 Under the Hood Parts

A Lot of Little Things Done Well

3 Pivot Points

- Hardened Steel Set Screws
- Self-Locking Nuts & Washers At Pivot Points

Connected Parts Remain Tight

4 Delivery Arms

- Chromed Billet Aluminum End Caps
- Oil Impregnated Bronze Bushings
- Friction Adjustment Set Screws on Delivery Arms

Metal End Caps Won't Break or Discolor Over Time
Appropriate Bearings With Friction Adjustment Assure
Adjustable Feather Touch Movement of Arms & No Drift

7 Metal Control Head Chassis On 7000 Series

- All Aluminum Control Chassis
- North America's Only All Aluminum Control Head Chassis
Results In A Lifetime Warranty

8 Under The Hood Parts

- Brass Parts w. Electroless Nickel Plating: Air & Water T's, Distribution Block, Master Control Block, Flow Valves
- No Cracking or Warping of Metal Results in Lifetime Warranty





Designer Friendly™

**What Exactly is Designer Friendly?
Designer Friendly is Patient Friendly.**

It is being able to choose from a palette of nine beautiful paint colors including the industry standard white, three carbon fiber look trim pieces and chrome accents.

Your chair, light and delivery systems can now enhance your interior design. Our exclusive Designer Friendly™ customization options make dental equipment fun to look at.

**Forest is the Only North American Dental Equipment
Manufacturer with a WOW Factor.**

Warranty

TERMS

All prices unless otherwise listed are F.O.B. Hillsboro, Oregon U.S.A. Payments are net 60 days of invoice date. A service charge of 1-1/2% per month (annual rate 18%) will be charged on past due accounts, \$1.00 minimum. All prices are subject to change without notice.

RETURN MERCHANDISE

Authorized Forest dealers wishing to return merchandise for credit consideration must:

- Obtain prior factory authorization.

- Provide basic reason for return. (Including written explanation &/or photographs)

- Provide serial number, purchase order or invoice number of original order.

- Provide a purchase order for warranty items when necessary.

- Credit will be issued by Forest upon determination of warranty coverage in accordance with the stated Warranty Policy.

Return product (or photographic evidence for customer service review) within a period of 90 days—if product is not returned (reviewed) within time period, authorization becomes invalid. Forest will approve return and credit amount after evaluation of product and or photographic documentation. If product is used or modified, the reason for return will be used to determine if replacement product or credit will be allowed.

- Handling Charges:

- 25% or \$15.00 minimum restock fee will be charged on returned equipment approved for credit.

- 10% or \$15.00 minimum restock fee will be charged on new and unopened parts/components.

- Returned items must be shipped freight prepaid.

WARRANTY

FOREST warrants its products to be free from defects in material and workmanship only. No other warranties are expressed or implied. This warranty shall extend for five years unless otherwise stated. Written notice of breach must be given to FOREST within this period. Buyer's remedy for breach of this warranty is limited to repair parts or replacement of items by FOREST. Factory repairs are covered for a period of 90 days. No claim for labor or consequential damages will be allowed. Warranty is valid only if Warranty Registration Card provided at time of purchase is returned to FOREST within 90 days of installation. FOREST is not responsible for ensuring equipment or installation conformity to local code or regulatory requirements. Check with local code or regulatory requirements before purchase and installation of all FOREST product.

WARRANTY IS VOID IF:

- Items are carelessly used or improperly maintained or installed.

- Damage results from using cleaning, disinfecting or sterilization chemicals and processes.

- Damage is the result of freight damage and as such claims must be filed with the carrier.

Warranty term exceptions cover items that are normally expected service items and items not covered by Forest's warranty:

- Hand piece illumination tubings, heated syringe tubings & assemblies and light bulbs are warranted for six months.

- Power supplies, syringe buttons, HVE & SE valves are warranted for one year.

- Water bottles, gas springs and hand piece tubings are warranted for two years.

- Air & Water tubing connectors (T's), Distribution Block, Master Control Block, Flow Valves, 7000 Chassis are warranted for lifetime of dental unit (maximum of 20 years).

- Bien Air hand piece motors, Satelec scaler and Air Techniques intraoral camera are covered under manufacturer's warranty. Installation of ancillary devices are warranted for two years.

CANCELLATION POLICY

- Standard orders:

- Fax cancellation request required 10 working days prior to promised ship date, otherwise a 25% restock fee will be charged.

- Expedited ship date requests are non-cancellable.

CUSTOM ORDERS:

- Custom configurations are those that deviate from Forest's published product offering:

- Orders are non-cancellable and non-returnable.

- May be subject to an additional "Deviation" charge and/or a non-refundable engineering charge

- Custom powder coat, custom plastic surface treatments and or/ custom treatments such as multiple color combinations or custom colors may result in an upcharge of 10-15% per model and are non-cancellable and non-returnable.

Table of Contents

Chair Mounted Products & Configurator	14
Patient Chair + Dr/Asst Stools	14
Delivery Control Heads	18
Mounting Options	25
Floor Mount	25
Pivot	26
Fixed with Sidebox	28
Fixed with no Sidebox	30
Chair Mounted Lights + Posts	32
Chair Monitor Arms + Posts	33
Pre-Configured Chair Mounted Systems	36
Fixed Packages	36
Pivot Packages	40
Additional Delivery Systems & Equipment	49
Monitors + Ceiling & Wall Mounted Lights	49
Rear Mount Side Delivery Systems	52
Mobile Carts	66
Optional Delivery Systems	72
Factory Options + Parts	78
General Information	92

Navigating the Forest Catalog

The Forest catalog is easily navigated in three separate sections:

Section One

Chair Mounted Deliveries & Options

Section Two

Pre-Configured Chair Mounted Packages

Section Three

Additional Delivery Options

1

Modular Chair Mounted Delivery Configurations

Use this section of the catalog to “custom” configure a chair mounted delivery package to your specifications. The product is designed to be “modular”--starting with a chair simply add all desired products such as stools, unit control heads, handpiece tubings, ancillary products, operator lighting, monitor mounts, assistant's instrumentation or cuspidors.

- operator chair & doctor's/assistant's stools
- chair mounted control units
- pivot or sidebox configurations, cuspidors & assistant's instrumentation
- chair mounted operator lights
- chair mounted monitor mounts

2

Pre-Configured Chair Mounted Packages

Forest has configured ten packages based on the most popular combinations of equipment with our pure white or Designer Friendly color choice selections.

3

Additional Delivery Systems

- track, ceiling & wall mounted lights and monitors
- rear mount side delivery systems
- side cabinet delivery systems
- side wall delivery systems
- optional delivery systems
- panel mounts
- assistant's instrumentation
- cuspidors
- mobile dr's & assistant's carts
- transformers, factory options & parts

1 Step One

Select A Patient Chair & Doctor / Assistant's Stool

choose options for the selected patient chair & operatory stool



2 Step Two

Select One of Six Different Control Head Deliveries

choose desired handpiece tubing positioning & ancillary products such as electric micromotors, scalers, swivel trays or other options



3 Step Three

Select One of Four Mounting Options

deliveries can be mounted on the floor or on a chair with a left-to-right pivot mount, a fixed sidebox mount or simply fixed to a 35" post.



4 Step Four

Select Compatible Instrumentation & Cuspidors

choose the assistant's instrumentation, cuspidors or related ancillary products



5 Step Five

Select Any Chair Mounted Lights or Monitor Display Mounts

each light or monitor display requires a mounting arm; additionally the operatory light will require a power source if the 250 watt power supply was not selected in step two



Choices



Patient Chair

3901INT



Shown with
Memory Comfort Upholstery 3907-999-MC



Shown with
Standard Asepsis Upholstery 3901INT

Model 3901INT (220V)

Standard Features

- Ultraleather upholstery with wide back for elbow support
- Double articulating pinch-style headrest
- Thin back with full lumbar support
- Right/left patient access
- Swing-down locking armrests
- Hydraulic cantilever mechanism
- Emergency shut-off
- 30 degree base rotation with lock
- Multifunction foot switch
 - w/4 programmable preset positions, accommodates 3 additional controls
- Seat height: minimum 17" maximum 29"
- 220 Volt

Factory Options

- Hydraulic chair (220V).....3901INT
- Hydraulic chair (110V).....3900INT
- Designer Friendly powder coat option3901-220-CS
- Add chair touchpad3914-102
- Less chair footswitch3915-010-CS
- Quick disconnect w/ flow control 1/4" (for water).....0016-454-CS
- Quick disconnect w/ flow control 1/4" (for air).....0016-456-CS
- Chair adapter required for quick disconnects
- Contoured utility center housing & cover3900-101
- Standard with delivery head (as seen on pages 18 & 20).....3900-101
- IV Board3900-200
- Pedo Booster Seat3907-180
- Special color or Raffia upholstery.....3907-999-SP
- Dual color upholstery.....3907-999-DC
- Memory Comfort upholstery3907-999-MC
- Soft-touch back massager3900-100-INT
- Chair Adapters (if mounting configuration not selected)
 - Chair adapters come standard with one of three mounting options found on pages 25-31
 - For additional chair adapter selections see page 78

Part

Total

total:



ULTRALEATHER UPHOLSTERY STANDARD

- ☐ Baltic

☐ Dove Grey

☐ Pearlized Green Tea

☐ Raven Wing

☐ Dual Color (Upcharge for Memory Comfort only: 3907-999-DC)
- ☐ Charcoal

☐ Grenadine

☐ Pearlized Mica

☐ Sassy
- ☐ Diplomat Blue

☐ Papyrus

☐ Pearlized Midnight

☐ Stone
- ☐ Doe

☐ Parrot

☐ Pearlized Pewter

☐ Walnut

Raffia Ultraleather or Special Color : ☐ Special Color ☐ Durango Dust ☐ Noche
Part Number (Upcharge): 3907-999-SP

POWDER COAT SURFACE TREATMENTS (N/C)

Powder coat paint finishes: ☐ White ☐ Forest Grey

DESIGNER FRIENDLY™ SURFACE TREATMENTS

Powder coat paint finishes : ☐ Arctic Silver ☐ Bronze ☐ Charcoal ☐ Pearl ☐ Pewter
☐ Sage ☐ Shadow

Part number (Upcharge): 3901-220-CS

Doctor/Assistant's Stools

6126C 6137C 6147 6176 6187



Model 6126C



Model 6137C



Model 6147C



Model 6176



Model 6187

Standard Features

Factory Options

Part

Total

DOCTOR'S DELUXE 6126C

Ultraleather upholstery
5-leg base
Twin wheel hard floor casters
Pneumatic cylinder height adjustment,
17¹/₄" - 23³/₄"
Backrest w/height adjustment
Tilt seat function
Contoured seat

STOOL MODEL CHOICE:

Twin wheel carpet casters
Doctor's standard cylinder, 16¹/₄" - 20¹/₂"
Doctor's X-long cylinder, 19¹/₂" - 27"
(foot ring with support highly recommended)
Assistant's short cylinder, 21¹/₄" - 27"
Foot ring w/ support - 27"

0010-401-CS
6000-299-CS
6000-297-CS
6000-303-CS
6000-575

ASSISTANT'S STANDARD 6137C

Ultraleather upholstery
5-leg base
Twin wheel hard floor casters
Pneumatic cylinder height adjustment,
22¹/₂" - 31¹/₄"
Contoured seat
Torso support w/height adjustment & release lever
Foot ring w/height adjustment

TOTAL:

ASSISTANT'S DELUXE 6147C

Same as 6137C stool with additional features:
Backrest w/height adjustment

DOCTOR'S COMFORT 6176

Air circulating weave construction
Five leg base
Twin wheel hard floor casters
Pneumatic cylinder height adjustment, 17¹/₄" - 23³/₄"
Triple lever adjustment - independent back and seat
Backrest w/ angle height adjustment
Active tilt™ seat (actively moves w/ user)
Tilt seat lever function
Contoured seat

ASSISTANT'S COMFORT 6187

Same as 6176C stool with additional features:
Pneumatic cylinder height adjustment, 22¹/₂" - 31¹/₄"
Fully adjustable ratcheting assistant arm
Foot ring w/ height adjustment

ULTRALEATHER UPHOLSTERY STANDARD

- | | | | | |
|--|--|-------------------------------------|---|--------------------------------------|
| <input type="radio"/> Baltic | <input type="radio"/> Charcoal | <input type="radio"/> Diplomat Blue | <input type="radio"/> Doe | <input type="radio"/> Dove Grey |
| <input type="radio"/> Grenadine | <input type="radio"/> Papyrus | <input type="radio"/> Parrot | <input type="radio"/> Pearlized Green Tea | <input type="radio"/> Pearlized Mica |
| <input type="radio"/> Pearlized Midnight | <input type="radio"/> Pearlized Pewter | <input type="radio"/> Raven Wing | <input type="radio"/> Sassy | <input type="radio"/> Stone |
| | | | <input type="radio"/> Walnut | |

Forest Dental Control Heads

Affordable Excellence

Standard IC Control Head

- Material: aluminum hinged lid / 1/8" ABS plastic chassis with super tough DR acrylic protective coating
- Benefit: hinge allows quick access to controls & ancillary products / lid & chassis are resistant to UV, impact & compatible surface cleaners / aluminum lid is strong & lightweight
- Material: electroless nickel plated brass air & water T's, routing valves, pneumatic control & distribution blocks
- Benefit: lifetime warranty on all parts "under the hood" (on all forest control heads) / trouble free handpiece operation
- Material: aluminum handpiece holder bar with glass filled nylon injection molded handpiece holders
- Benefit: allows for up to four handpiece positions, a syringe & ancillary touch pad at your desired angle & spacing

Designer Friendly™

- Material: hinged aluminum control head lid
- Benefit: available in nine two-coat powder coat paint colors
- Material: plastic chassis
- Benefit: available in three carbon fiber look & two solid color finishes

Euro Control Head

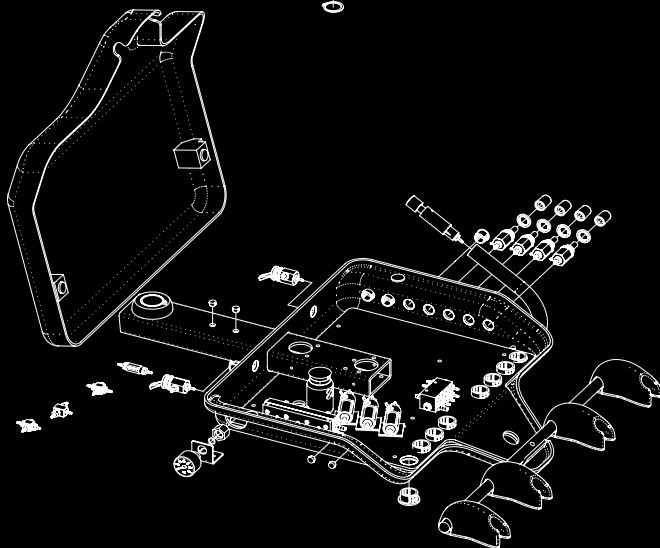
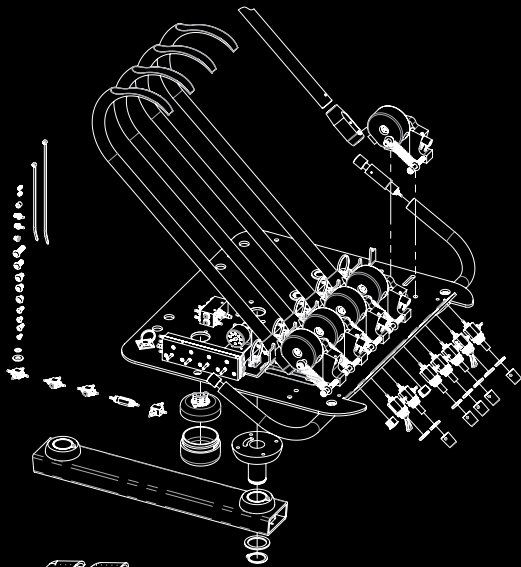
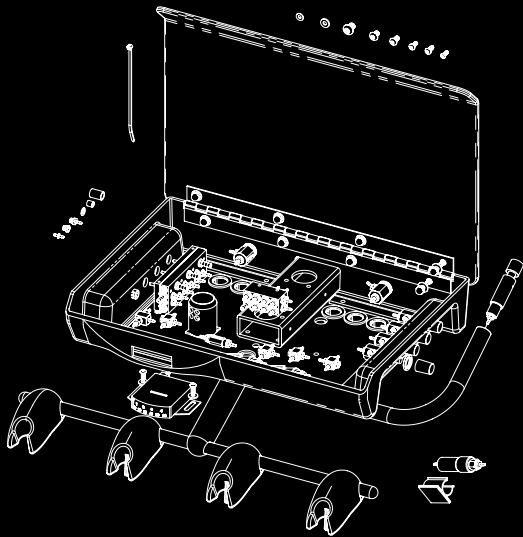
- Material: whip arms rotate on nylon wheels with aluminum & brass components
- Benefit: feather-touch whip movement / ultra light handpiece feel / long, trouble free life
- Material: control head swivels at its center point
- Benefit: 240-degrees of control head rotation allows for beside or over-the-patient placement
- Material: forward mounted aluminum whip arm system
- Benefit: allows for greater reach of handpiece & syringe expanding control head placement options

- Material: plastic control head lid
- Benefit: available in three carbon fiber looks & two solid color finishes
- Material: autoclavable silicone handpiece pad available in black & white
- Benefit: blends with Designer Friendly™ choices

Value Control Head

- Material: PVC pinch valve control blocks
- Benefit: ultra-reliable handpiece functions (drive air & air/water coolant) with a long trouble-free life
- Material: ABS plastic control cover w/ tough DR acrylic protective coating
- Benefit: resistant to UV, impact & compatible surface cleaners / easy removal for quick access to controls & ancillary products
- Material: aluminum chassis base plate
- Benefit: strong support for handpiece holder bar, positioning handles & control lid

- Material: plastic control head lid
- Benefit: available in three carbon fiber looks & two solid color finishes
- Material: chrome plated or powder coated handpiece holder bar
- Benefit: rich look enhancing a value based control head



Delivery Control Heads

2001INT

2002INT

2003INT



Standard IC Delivery
Model 2001INT



Contoured IC Delivery
Model 2002INT



Over the Patient Delivery
Model 2003INT

Standard Features

AUTOMATIC CONTROL FOR UP TO FOUR HANDPIECES

For 2001INT, 2002INT & 2003INT

- Asepsis 3-way air water syringe w/tubing, 5'
 - Contoured utility center, housing & cover
 - Pneumatic master control block w/diaphragm
 - Master on/off toggle
 - Individual handpiece pressure adjustment
 - Individual water coolant adjustment
 - Non-retraction water coolant with on/off
 - Air coolant adjustment
 - Handpiece exhaust filter
 - Dual handle brake release function
 - Wet/dry foot control
 - Air kit for utility center
 - Flexible control arm with pneumatic brake
 - Internal umbilical, 5' with 1' external from chair to utility center
- *Please note: tubing & tray sold separately.*

Shipping weight:

34 lb / 16 kg

33 lb / 15 kg

42 lb / 19 kg

POWDER COAT SURFACE TREATMENTS (N/C)

Powder coat paint finishes: ☐ White ☐ Forest Grey

Plastic finishes: ☐ White ☐ Forest Grey ☐ Greywood (carbon fiber) ☐ Laser Leather (carbon fiber) ☐ Lemans (carbon fiber)

DESIGNER FRIENDLY™ SURFACE TREATMENTS

Powder coat paint finishes : ☐ Arctic Silver ☐ Bronze ☐ Charcoal ☐ Pearl ☐ Pewter
(10% upcharge) ☐ Sage ☐ Shadow



customize your forest delivery:

- Step 1: Select delivery head model
 Step 2: Select surface treatment options
 Step 3: Select handpiece positions
 Step 4: Select optional upgrades



model selected:

- Standard IC:** ☐ 2001INT
Contoured IC: ☐ 2002INT
Over the Patient: ☐ 2003INT



select handpiece positions:

handpiece positions	description	#1	#2	#3	#4	#5	part #	total
SYRINGE	silicone sheath, gray	✓					INCLUDED	
4-HOLE (vinyl)	vinyl tubing, gray						0017-010-GRY	
■ 6-PIN (vinyl)	vinyl tubing, gray						0017-603-GRY	
4-HOLE (silicone)	silicone tubing, gray						0017-693-INT	
■ 6-PIN- (silicone)	silicone tubing, gray						0017-614-INT	
● SCALER	Satelec SP Newtron Piezo scaler						SAT-S-INT	
● LED SCALER	Satelec LED Piezo scaler						SAT-S-LED-INT	
● ELECTRIC MICRO-MOTOR	BIEN-AIR MCX with Rheostat control						BIEN-MCX-INT	
● ELECTRIC MICRO-MOTOR (with touchpad)	BIEN-AIR MX2 with Touchpad & Endo control						BIEN-MX2-INT	
● HEATED SYRINGE	conversion kit (1) syringe (vinyl)						1107-450-INT	
▲ ADDITIONAL HP, WET	REQUIRED for a WET 4th HP position						1100-189-INT	
▲ ADDITIONAL HP, DRY	REQUIRED for a DRY 4th HP position						1100-190-INT	
Intra-Oral Camera	Factory installed Airtech Polaris camera						AIRTECH-P	
NO TUBING	leave the block open						OPEN	
PLUG BLOCK	plug & close the block						PLUG	

■ REQUIRES HP illumination circuit board & EITHER 250 watt power supply or 48 watt power supply (board can accommodate (2) HP positions)

● 250 watt power supply source required when ordering chair mounted light or two or more ancillary devices

▲ When a fourth HP position is ordered, an ADDITIONAL DRY or WET HP position must be ordered



optional upgrades:

Description	Part #	Total
Upgrade Kit: wet/dry foot control with chip air	1105-109-INT-CS	
Unit mounted chair touchpad	1700-081-CS	
Additional umbilical (per foot)	1115-999-CS	
Water shut-off valve & regulator kit	1115-297-INT	
Quick disconnect w/flow control, 1/4" (for water)	0016-454-CS	
Quick disconnect w/flow control, 1/8" (for air)	0016-456-CS	
Chrome Accents	9000-998-CS	
Electric micro-motor touchpad mount (factory installed)	0010-649	
HP illumination circuit board with time delay and adjustable voltage, accommodates 2 HP positions*		
*Requires power supply	0014-357	
Power supplies (page 79)		
35 watt power supply (heated syringe)	0014-124	
48 watt power supply (motors, scalers)	0014-390	
250 watt (universal) power supply*		
*Required when ordering two or more ancillary devices or when ordering chair mounted light	0014-387	
Arm mounted swivel tray option (page 87)		
Small Tray, side delivery (213mm x 318mm)	1110-468	
Small Tray, over the patient delivery (213mm x 318mm)	1110-787	
Large Tray, side delivery (289mm x 375mm)	1110-475	
Large Tray, over the patient delivery (289mm x 375mm)	1110-774	
Less contoured utility center (housing and cover only)	3900-101-CS	
Add standard utility center (housing and cover only)	1115-020	

total:

Delivery Control Heads

1495INT

1800INT

2004INT



Rear Mount Duo Delivery
Model 1495INT



Pneumatic Tray Delivery
Model 1800INT



Pinch-Valve Delivery
Model 2004INT



Add Durr Vacuum:
0024-181

Standard Features

AUTOMATIC CONTROL 3 HANDPIECES

Asepsis 3-way air water syringe w/tubing, 5'
Contoured utility center, housing & cover
Pneumatic master control block w/diaphragm
Master on/off toggle
Individual handpiece pressure adjustment
Individual water coolant adjustment
Non-retraction water coolant with on/off
Air coolant adjustment
Handpiece flush
Wet/dry foot control
Air kit for utility center
Rear pivot (left/right) control arm
Single 1.5 liter self-contained clean water bottle
Quick disconnect system for water bottle

FLEX ARM SYSTEM WITH TRAY HOLDER

Flexible control arm with pneumatic brake
Stainless large tray holder, 9³/₄" x 13¹/₂"
Wrap around holder bar
Dual handle break release function
On/off toggle, 3-way with exhaust
Air pressure regulator
Master air shut-off valve

AUTO PINCH VALVE CONTROL 3 HANDPIECES

Asepsis 3-way air water syringe w/tubing, 5'
Individual pinch valve control blocks
Master on/off toggle
Individual handpiece pressure adjustment
Individual water coolant adjustment
Non-retraction water coolant adjustment
Air coolant adjustment
Single handle brake release function
Wet/dry foot control
Flexible control arm with pneumatic brake
Vertical travel 28" / horizontal travel 62"



POWDER COAT SURFACE TREATMENTS (N/C)

Powder coat paint finishes: ☐ White ☐ Forest Grey

Plastic finishes: ☐ White ☐ Forest Grey ☐ Greywood (carbon fiber) ☐ Laser Leather (carbon fiber) ☐ Lemans (carbon fiber)

DESIGNER FRIENDLY™ SURFACE TREATMENTS

Powder coat paint finishes: ☐ Arctic Silver ☐ Bronze ☐ Charcoal ☐ Pearl ☐ Pewter
(10% upcharge) ☐ Sage ☐ Shadow

customize your forest delivery:

- Step 1: Select delivery head model
 Step 2: Select surface treatment options
 Step 3: Select handpiece positions
 Step 4: Select optional upgrades

model selected:

- Rear Mount Duo:** ☐ 1495INT
Pneumatic Tray: ☐ 1800INT
Pinch Valve: ☐ 2004INT

select handpiece positions:

Please note optional upgrades are not available for 1800INT.

handpiece positions	description	#1	#2	#3	#4	#5	part #	total
SYRINGE	silicone sheath, gray	✓					INCLUDED	
4-HOLE (vinyl)	vinyl tubing, gray						0017-010-GRY	
6-PIN (vinyl)	vinyl tubing, gray						0017-603-GRY	
4-HOLE (silicone)	silicone tubing, gray						0017-693-INT	
6-PIN- (silicone)	silicone tubing, gray						0017-614-INT	
SCALER	Satelec SP Newtron Piezo scaler						SAT-S-INT	
LED SCALER	Satelec LED Piezo scaler						SAT-S-LED-INT	
ELECTRIC MICRO-MOTOR	BIEN-AIR MCX with Rheostat control						BIEN-MCX-INT	
ELECTRIC MICRO-MOTOR (with touchpad)	BIEN-AIR MX2 with Touchpad & Endo control						BIEN-MX2-INT	
HEATED SYRINGE	conversion kit (I) syringe (vinyl)						1107-450-INT	
▲ ADDITIONAL HP, WET	REQUIRED for a WET 4th HP position						1100-189-INT	
▲ ADDITIONAL HP, DRY	REQUIRED for a DRY 4th HP position						1100-190-INT	
Intra-Oral Camera	Factory installed Airtech Polaris camera						AIRTECH-P	
NO TUBING	leave the block open						OPEN	
PLUG BLOCK	plug & close the block						PLUG	

- REQUIRES HP illumination circuit board & EITHER 250 watt power supply or 48 watt power supply (board can accommodate (2) HP positions)
 ● 250 watt power supply source required when ordering chair mounted light or two or more ancillary devices
 ▲ When a fourth HP position is ordered, an ADDITIONAL DRY or WET HP position must be ordered

optional upgrades:

Please note: optional upgrades are not available for 1800INT.

Description	Part #	Total
Add Durr electric vacuum kit: syringe, HVE, SE, central vacuum (for model 1495 only)	0024-181	
Upgrade Kit: wet/dry foot control with chip air	1105-109-INT-CS	
Unit mounted chair touchpad	1700-081-CS	
Additional umbilical (per foot)	1115-999-CS	
Water shut-off valve & regulator kit	1115-297-INT	
Quick disconnect w/flow control, 1/4" (for water)	0016-454-CS	
Quick disconnect w/flow control, 1/8" (for air)	0016-456-CS	
Chrome Accents	9000-998-CS	
Electric micro-motor touchpad mount (factory installed)	0010-649	
HP illumination circuit board with time delay and adjustable voltage, accommodates 2 HP positions*		
*Requires power supply	0014-357	
Power supplies (page 79)		
25 watt power supply	0014-395	
35 watt power supply (heated syringe)	0014-124	
48 watt power supply (motors, scalers)	0014-390	
250 watt (universal) power supply*		
*Required when ordering two or more ancillary devices or when ordering chair mounted light	0014-387	
Arm mounted swivel tray option (swivel tray option only available with model 2004INT) (page 87)		
Small Tray, side delivery (213mm x 318mm)	1110-468	
Large Tray, side delivery (289mm x 375mm)	1110-475	
Less contoured utility center (housing and cover only)	3900-101-CS	
Add standard utility center (housing and cover only)	1115-020	

total:

Forest Mounting Options

Affordable Excellence

Fixed Floor Mount

- Material: all aluminum construction with heavy duty mounting plate
- Benefit: strong construction yields long life
- Material: comes standard with stainless steel mounting bolts for both wood flooring or concrete
- Benefit: control heads can be easily mounted on any surface

Pivot Left/Right Mount

- Material: needle roller bearings & teflon friction adjustments
- Benefit: 240 degrees of "feather-touch" rotation & maneuverability
- Material: all aluminum arms, cuffs & water bottle mount
- Benefit: creates a sturdy & strong foundation that will outlast the industry standard of plastic construction

Fixed With Sidebox Mount

- Material: all aluminum housing with heavy duty mounting arm & feather touch bushings
- Benefit: large area to neatly store all ancillary products or house DURR CS1 amalgam separator
- Material: high quality plastic trim, with billet aluminum caps, collars & plugs
- Benefit: regardless of the options you choose we provide a a customized feel for all option combinations

Fixed Without Sidebox Mount

- Material: cast adapter with 35" mounting post & internal umbilical
- Benefit: the cast adapter provides the highest rigidity as opposed to a less sturdy "flat" cast adapter used by other manufacturers
- Material: quick-disconnect clean water system
- Benefit: the quick disconnect allows easy one handed access to the water bottle

Designer Friendly™

- Material: all aluminum arm posts with heavy duty mounting plate
- Benefit: available in nine two-coat powder coat paint colors
- Material: plastic cover skirt on the level plate
- Benefit: plastic matches powder coat

- Material: all aluminum arm & cast mount adapter
- Material: chrome billet aluminum bearing covers & caps
- Benefit: creates a rich & sturdy aesthetic

- Material: all aluminum chassis, custom mount adapter & aluminum caps, plugs & collars
- Benefit: available in nine two-coat powder coat paint colors
- Material: plastic trim & housing cover
- Benefit: available in three carbon fiber looks & two solid color finishes

- Material: high quality brushed aluminium
- Benefit: available in nine two-coat powder coat paint colors
- Material: machined delrin plastic
- Benefit: easily matched with Designer Friendly choices

Fixed Floor Mount



Pivot Left/Right Mount



Fixed With Sidebox Mount



Fixed Without Sidebox Mount





Mounting Options : Floor Mount

3000INT FLOOR MOUNT CONFIGURATION



Model 3000INT

Standard Features

- Floor mount base and post
- Internal umbilical
- Bent rigid arm
- Single 1.5 liter self-contained clean water bottle
- Quick-disconnect system for water bottle
- Standard utility center housing & cover
(in lieu of contoured utility center)

delivery head options

The 3000INT floor mount model must be ordered with one of the chair mounted delivery systems found in the delivery head configuration worksheets.

- ☐ 1800INT
- ☐ 2003INT
- ☐ 2001INT
- ☐ 2004INT
- ☐ 2002INT

optional upgrades:

Description	Part #	Total
Less clean water system	1700-355-INT-CS	
total:		

POWDER COAT SURFACE TREATMENTS (N/C)

Powder coat paint finishes: ☐ White ☐ Forest Grey

Plastic finishes: ☐ White ☐ Forest Grey ☐ Greywood (carbon fiber) ☐ Laser Leather (carbon fiber) ☐ Lemans (carbon fiber)

DESIGNER FRIENDLY™ SURFACE TREATMENTS

Powder coat paint finishes : ☐ Arctic Silver ☐ Bronze ☐ Charcoal ☐ Pearl ☐ Pewter
(10% upcharge) ☐ Sage ☐ Shadow

Mounting Options : Pivot

8600INT PIVOT CONFIGURATION (left/right)



Model 8600INT

Standard Features

Pivot chair adapter/ bearing kit
Internal umbilical
Pivot arm
Single 1.5 liter self-contained clean water bottle
Quick-disconnect system for water bottle

delivery head options

The 8600INT pivot mount model must be ordered with one of the chair mounted delivery systems found in the delivery head configuration worksheets.

- | | |
|-------------------------------|-------------------------------|
| <input type="radio"/> 1800INT | <input type="radio"/> 2003INT |
| <input type="radio"/> 2001INT | <input type="radio"/> 2004INT |
| <input type="radio"/> 2002INT | |

POWDER COAT SURFACE TREATMENTS (N/C)

Powder coat paint finishes: ☐ White ☐ Forest Grey

Plastic finishes: ☐ White ☐ Forest Grey ☐ Greywood (carbon fiber) ☐ Laser Leather (carbon fiber) ☐ Lemans (carbon fiber)

DESIGNER FRIENDLY™ SURFACE TREATMENTS

Powder coat paint finishes: ☐ Arctic Silver ☐ Bronze ☐ Charcoal ☐ Pearl ☐ Pewter
(10% upcharge) ☐ Sage ☐ Shadow



customize your forest delivery:

- Step 1: Begin with selected mounting configuration
- Step 2: Select surface treatment options
- Step 3: Select pivot configuraton add-ons
- Step 4: Select optional upgrades



pivot add-ons:



1095INT ASSISTANT INSTRUMENTATION WITH HVE/SE/SYRINGE

Rear-mounted assistant instrumentation
Quad-holder with HVE/SE and 3-way air/water syringe
Central vacuum accessory package with disposable solids collector

model:

total:





1590INT DELUXE CUSPIDOR

Rear mounted cuspidor
Quad-holder with HVE/SE and 3-way air/water syringe
Central vacuum accessory package with disposable solids collector
One-piece ceramic bowl
Automatic cup fill and timed bowl rinse
Water shutoff valve and regulator kit





1091INT-DURR ASSISTANT'S INSTRUMENTATION

Rear mounted assistant's instrumentation
with Durr electric-activated vacuum
Tri-holder with HVE/SE and 3-way air/water syringe
Central vacuum accessory package with disposable solids collector





1591INT-DURR DELUXE CUSPIDOR

Rear mounted cuspidor
with Durr electric-activated vacuum
Tri-holder with HVE/SE and 3-way air/water syringe
Central vacuum accessory package with disposable solids collector
One-piece ceramic bowl
Automatic cup fill and timed bowl rinse
Water shutoff valve and regulator kit





optional upgrades:

Description

Part

Total

Chair touchpad (1095 & 1091 models only)	1700-088-CS	_____
Quick disconnect w/ flow control 1/4" (specify air or water) (1095 & 1091 models only)	0016-455-CS	_____
Additional self-contained clean water system, single bottle 1.5 liter (1091, 1095 arm)	1700-319-CS	_____
Durr ball joint HVE	0016-469	_____
Less clean water system	1700-355-INT-CS	_____

total:

Mounting Options : Fixed With Sidebox

8500INT FIXED with SIDEBOX CONFIGURATION



Model 8500INT

Standard Features

Chair adapter
Sidebox housing
Internal umbilical
Control post
Bent rigid arm
Single 1.5 liter self-contained clean water bottle
Quick-disconnect system for water bottle

delivery head options

The 8500INT fixed with sidebox model must be ordered with one of the chair mounted delivery systems found in the delivery head configuration worksheets.

- | | |
|-------------------------------|-------------------------------|
| <input type="radio"/> 1800INT | <input type="radio"/> 2003INT |
| <input type="radio"/> 2001INT | <input type="radio"/> 2004INT |
| <input type="radio"/> 2002INT | |

POWDER COAT SURFACE TREATMENTS (N/C)

Powder coat paint finishes: ☐ White ☐ Forest Grey

Plastic finishes: ☐ White ☐ Forest Grey ☐ Greywood (carbon fiber) ☐ Laser Leather (carbon fiber) ☐ Lemans (carbon fiber)

DESIGNER FRIENDLY™ SURFACE TREATMENTS

Powder coat paint finishes : ☐ Arctic Silver ☐ Bronze ☐ Charcoal ☐ Pearl ☐ Pewter
(10% upcharge) ☐ Sage ☐ Shadow



customize your forest delivery:

- Step 1: Begin with selected mounting configuration
- Step 2: Select surface treatment options
- Step 3: Select fixed with sidebox configuraton add-ons
- Step 4: Select optional upgrades



fixed w/ sidebox add-ons:



1577INT FIXED CUSPIDOR

Cuspidor (sidebox mounted)
One-piece ceramic bowl
Automatic cup fill and timed bowl rinse
Water shutoff valve and regulator kit

model:



total:



1576INT DELUXE CUSPIDOR

Cuspidor with assistant instrumentation (sidebox mounted)
Quad-holder with HVE/SE and 3-way air/water syringe
Central vacuum accessory package with disposable solids collector
One-piece ceramic bowl
Automatic cup fill and timed bowl rinse
Water shutoff valve and regulator kit





1092INT-DURR ASSISTANT'S INSTRUMENTATION

Assistant's instrumentation (sidebox mounted)
with DURR electric-activated vacuum
Tri-holder with HVE/SE and 3-way air/water syringe
Central vacuum accessory package with disposable solids collector





1578INT-DURR DELUXE CUSPIDOR

Cuspidor (sidebox mounted)
with Durr electric-activated vacuum
Tri-holder with HVE/SE and 3-way air/water syringe
Central vacuum accessory package with disposable solids collector
One-piece ceramic bowl
Automatic cup fill and timed bowl rinse





optional upgrades:

Description

Part

Total

Chair touchpad (1092 model only)

1700-088-CS

Vacuum drain cuspidor

1400-115

Quick disconnect w/ flow control 1/4" (for water)

0016-454-CS

Quick disconnect w/ flow control 3/8" (for air)

0016-456-CS

Additional self-contained clean water system, single bottle 1.5 liter (1092INT model only)

1700-319-CS

Durr amalgam separator cover (separator not included)

1400-270-CS

Durr ball joint HVE

0016-469

Less clean water system

1700-355-INT-CS

total:

Mounting Options : Fixed Without Sidebox

8501INT without SIDEBOX CONFIGURATION



Model 8501INT

Standard Features

Chair adapter
Internal umbilical
Control post
Bent rigid arm
Single 1.5 liter, self-contained water bottle
Quick-disconnect system for water bottle

delivery head options

The 8501INT fixed without sidebox model must be ordered with one of the chair mounted delivery systems found in the delivery head configuration worksheets.

- | | |
|-------------------------------|-------------------------------|
| <input type="radio"/> 1800INT | <input type="radio"/> 2003INT |
| <input type="radio"/> 2001INT | <input type="radio"/> 2004INT |
| <input type="radio"/> 2002INT | |

POWDER COAT SURFACE TREATMENTS (N/C)

Powder coat paint finishes: ☐ White ☐ Forest Grey

Plastic finishes: ☐ White ☐ Forest Grey ☐ Greywood (carbon fiber) ☐ Laser Leather (carbon fiber) ☐ Lemans (carbon fiber)

DESIGNER FRIENDLY™ SURFACE TREATMENTS

Powder coat paint finishes: ☐ Arctic Silver ☐ Bronze ☐ Charcoal ☐ Pearl ☐ Pewter
(10% upcharge) ☐ Sage ☐ Shadow



customize your forest delivery:

- Step 1: Begin with selected mounting configuration
- Step 2: Select surface treatment options
- Step 3: Select fixed without sidebox configuration add-ons
- Step 4: Select optional upgrades



fixed w/o sidebox add-ons:



1075INT ASSISTANT'S INSTRUMENTATION WITH HVE/SE/ SYRINGE

Fixed mount assistant's instrumentation delivery
Quad-holder with HVE/SE and 3-way air/water syringe
Central vacuum accessory package with disposable
solids collector
(Available only with the model 1636INT cuspidor)

model:

total:



1092INT-DURR ASSISTANT'S INSTRUMENTATION

Assistant's instrumentation (sidebox mounted)
with DURR electric-activated vacuum
Tri-holder with HVE/SE and 3-way air/water syringe
Central vacuum accessory package with disposable
solids collector



1634INT BASIC CUSPIDOR

Removable ceramic bowl
Manual cup fill and timed bowl rinse
Individual assistant's instrumentation holders
Internal umbilical
Master water shutoff valve and regulator kit



optional upgrades:

Description	Part #	Total
Quick disconnect w/ flow control 1/4", specify air/water (1095INT assistant models)	0016-455-CS	<input type="text"/>
Additional self-contained clean water system, single bottle 1.5 liter (1091INT arm).....	1700-319-CS	<input type="text"/>
Durr ball joint HVE	0016-469	<input type="text"/>
Less clean water system	1700-355-INT-CS	<input type="text"/>
total:		<input type="text"/>

Chair Mounted Lights + Posts

9072INT 9081INT



110V: available upon request

LED Light Model 9073INT (220V)



110V: available upon request

Halogen Light Model 9081INT (220V)

Standard Features

MODEL 9073

Adjustable color temperature,
4200 to 6000 kelvin
Input voltage 220V, 1A
3-Axis light head movement
Estimated 50,000 hrs. lifetime
No fan, less noise
Improved working conditions
Low heat production

MODEL 9081

3-Axis light head movement
Automatic on/off activation
Additional bulb
Color temperature, 4,200 to 5,500 Kelvin
Adjustable focal length
Input voltage, 220V 1A

Factory Options

Light model choice:

LIGHT POST

Pivot 1112-644
35" Fixed (no sidebox) 1110-820
44" Two-piece light post 1110-616

POWER SUPPLIES

100 watt 0014-389
250 watt power supply* 0014-387

**not needed if already selected in delivery configurator*

additional options

MODEL 9073

LEDs assembly with reflectors 9072-012
Left & right handles 9072-013
Protective screen 9072-014

MODEL 9081

Replacement bulb 0014-300

Part

Total

total:

POWDER COAT SURFACE TREATMENTS (N/C)

Powder coat paint finishes: ☐ White ☐ Forest Grey

Plastic finishes: ☐ White ☐ Forest Grey ☐ Greywood (carbon fiber) ☐ Laser Leather (carbon fiber) ☐ Lemans (carbon fiber)

DESIGNER FRIENDLY™ SURFACE TREATMENTS

Powder coat paint finishes: ☐ Arctic Silver ☐ Bronze ☐ Charcoal ☐ Pearl ☐ Pewter
(10% upcharge) ☐ Sage ☐ Shadow

Shipping weight:

9072INT 42 lb / 19 kg

9081INT 35 lb / 16 kg

1300-025-CS 5 lb / 2 kg

Chair Mounted Monitor Arms + Posts

1300RM-INT 1300TPM



ring post mount

Model 1300RM-INT



top post mount

Model 1300TPM-INT

Standard Features	Factory Options	Part #	Total
MONITOR MOUNT ASSEMBLY, RING POST MOUNT 1300RM-INT ICW Quicklink monitor mount Rex positioning handles 17.5" ring mount rigid arm	Monitor mount assembly model choice: _____ LIGHT POST (1300RM-INT) Pivot light post 1112-644 44" two-piece dual slot, fixed sidebox mount w/ Forestlight bushing 1110-617-INT 35" w/ dual slot and post clamp, fixed 1110-045	_____ _____ _____ _____	_____ _____ _____ _____
MONITOR MOUNT ASSEMBLY, TOP POST MOUNT 1300RM-INT & 1300TPM-INT ICW Quicklink monitor mount Rex positioning handles 22" top post mount rigid arm	MONITOR POST POST (1300TPM-INT) Pivot post 1331-644 30" w/ dual slot, fixed sidebox mount, w/ oilite bushing, fixed 1331-998 30" w/ slot & post clamp, fixed mount, w/ oilite bushing 1331-997	_____ _____ _____ _____	_____ _____ _____ _____
Monitor Requirements: weight: 8.25 to 13 lbs max, width of 19"			
		total:	_____

All monitor arms must be ordered with a mounting post
 If ordering without a unit, a chair adapter is required with
 the purchase of the chair (monitors screens not included).

POWDER COAT SURFACE TREATMENTS (N/C)

Powder coat paint finishes: ☐ White ☐ Forest Grey

Plastic finishes: ☐ White ☐ Forest Grey ☐ Greywood (carbon fiber) ☐ Laser Leather (carbon fiber) ☐ Lemans (carbon fiber)

DESIGNER FRIENDLY™ SURFACE TREATMENTS

Powder coat paint finishes: ☐ Arctic Silver ☐ Bronze ☐ Charcoal ☐ Pearl ☐ Pewter
 (10% upcharge) ☐ Sage ☐ Shadow

Shipping weight:
 1300RM, 1300TPM 15 lb / 7 kg

1 Step One

Review The “As Shown Package”



2 Step Two

Review The Package Specifications, Part Numbers & Pricing



3 Step Three

Explore Additional Popular Equipment Choices
Details Can Be Found In “Factory Options & Parts” Located In Section 3



Section 2 Pre-configured Chair Mounted Systems



Patient Chair & Stools

Operator Chair	3901INT
Memory Comfort Upholstery	3907-999-MC
Designer Friendly Powder Coat	3901-220-CS

Delivery System

* Standard IC Delivery	2001INT
* 4- Hole Vinyl Control Tubing (quantity of 3)	0017-010-GRY

Configuration

* Fixed With Sidebox	8500INT
* Deluxe Cuspidor w/ Durr	1578INT-DURR

Operatory Lights & Monitor Mounts

*Halogen Light	9081INT
*44" Two Piece Light Post (with Dual Slots)	1107-617-INT
*Ring Mount Monitor Assembly	1300RM-INT
100 Watt Power Source	0014-382

Subtotal =

* with 10% Designer Friendly™ surcharge

Total =



Fixed With Sidebox

Umatilla Package



Umatilla Package

PATIENT CHAIRS + STOOLS			<i>(page 14)</i>
Operator chair	3901INT		
DELIVERY SYSTEMS			<i>(page 18)</i>
Large rear mounted delivery	1495INT		
Durr assistant's instrumentation	0024-181		
4-hole vinyl HP tubing (quantity of 3)	0017-010-GRY		
CONFIGURATION			<i>(page 28)</i>
Sidebox package	8500INT		
Less clean water system	1700-355-INT-CS		
Deluxe cuspidor	1577INT		
OPERATORY LIGHTS + MONITOR MOUNTS			<i>(page 32)</i>
LED light	9072INT		
100 watt universal power supply	0014-389		
Ring mount monitor arm	1300RM-INT		
Fixed light post	1110-617-INT		
total:			

Popular Equipment Choices



Silicone 6-pin &
Light Board
1700-175-INT
page 82



Doctor's Comfort Stool
6176
page 15



Satelec Scaler
SAT-S-INT
page 81



Durr Amalgam Separator
1400-270-CS
page 82



Universal Power Supply
(250 watt)
0014-387
page 79



Cayuse Package

PATIENT CHAIRS + STOOLS

(page 14)

Operator chair	3901INT
Doctor's deluxe stool	6126C
Assistant's standard stool	6137C

DELIVERY SYSTEMS

(page 18)

Contoured IC delivery	2002INT
4-Hole vinyl HP tubing (quantity of 3)	0017-010-GRY

CONFIGURATOIN

(page 28)

Sidebox package	8500INT
Durr assistant's instrumentation, mounted from cast adapter	1092INT-DURR
Deluxe cuspidor	1577INT

OPERATORY LIGHTS + MONITOR MOUNTS

(page 32)

LED light	9072INT
250 watt universal power supply	0014-387
Ring mount monitor arm	1300RM-INT
Fixed light post	1110-617-INT

total:

POPULAR EQUIPMENT CHOICES



Unit Mount Touchpad
1700-081-CS
page 82



Small Swivel Tray (side delivery)
1110-468
page 87



Silicone 6-pin &
Light Board
1700-175-INT
page 82



Heated Syringe Conversion Kit
1107-450-INT
page 82



Chrome Option (delivery)
9000-998-CS
page 19

Fixed With Sidebox

Sierra Package



Sierra Package

PATIENT CHAIR + STOOLS (page 14)
 Operatory chair 3901INT

DELIVERY HEAD (page 18)
 Standard IC delivery 2001INT
 4-hole HP tubing, vinyl (quantity of 3) 0017-010-GRY
 Small swivel tray (side delivery) 1110-468

CONFIGURATION (page 29)
 Sidebox package 8500INT
 Deluxe cuspidor
 w/Durr assistant's instrumentation 1578INT-DURR

OPERATORY LIGHTS + MONITOR MOUNTS (page 32)
 Halogen light 9081INT 1500
 44" light post 1110-616
 250 watt universal power supply 0014-387

total:

Popular Equipment Choices



Doctor's Comfort Stool
6176
page 15



Assistant's Comfort Stool
6187
page 15



Large Swivel Tray (side delivery)
1110-475
page 87



Memory Comfort
3907-999-MC
page 14



Durr Ball Joint
0016-469
page 84



Alsea Package

PATIENT CHAIR + STOOLS

Operator chair	3901INT	(page 14)
Doctor's deluxe stool	6126C	

DELIVERY HEAD

Over the patient delivery	2003INT	(page 18)
Vinyl tubing, 4-hole (quantity of 4)	0017-010-GRY	
Large swivel tray (over the patient)	1110-774	

CONFIGURATION

Sidebox package	8500INT	(page 28)
Deluxe cuspidor w/Durr assistant's instrumentation	1578INT-DURR	

OPERATORY LIGHTS + MONITOR MOUNTS

Halogen light	9081INT	(page 32)
44" light post	1110-616	
250 watt universal power supply	0014-387	

total:

POPULAR EQUIPMENT CHOICES



Chip-Air Upgrade Kit
1105-109-INT-CS
page 86



Polaris Airtech Camera
AIRTECH-P
page 80



Silicone 6-pin &
Light Board
1700-175-INT
page 82



Satelec Scaler
SAT-S-INT
page 81



Bien-Air MCX
BIEN-MCX-INT
page 80

Pivot (Left/Right)

Umpqua Package



Umpqua Package

PATIENT CHAIR + STOOLS		<i>(page 14)</i>
Operatory chair	3901INT	
DELIVERY HEAD		<i>(page 20)</i>
Value delivery	2004INT	
Vinyl tubing 4-hole (quantity of 3)	0017-010-GRY	
Small swivel tray (side delivery)	1110-468	
CONFIGURATION		<i>(page 26)</i>
Pivot package	8600INT	
w/ Durr assistant's instrumentation	1091INT-DURR	
OPERATORY LIGHTS + MONITOR MOUNTS		<i>(page 32)</i>
Halogen light	9081INT	
Pivot light post	1112-644	
100 watt power supply	0014-389	
total:		

Popular Equipment Choices

		
Unit Mount Touchpad 1700-081-CS page 82	Doctor's Deluxe Stool 6126C page 15	Assistant's Standard Stool 6137C page 15
		
Silicone 6-pin & Light Board 1700-175-INT page 82	Pivot Cuspidor w/ Durr 1591INT-DURR page 27	



Wallowa Package

PATIENT CHAIR + STOOLS *(page 14)*

Operatory chair 3901INT

DELIVERY HEAD *(page 18)*

Standard IC delivery 2001INT
 Vinyl HP tubing 4-hole (quantity of 3) 0017-010-GRY
 Small swivel tray (side delivery) 1110-468

CONFIGURATION *(page 26)*

Pivot package 8600INT
 Pivot cuspidor
 w/Durr assistant's instrumentation 1591INT-DURR

OPERATORY LIGHTS + MONITOR MOUNTS *(page 32)*

LED light 9072INT
 Pivot light post 1112-644
 250 watt universal power supply 0014-387

total:

Popular Equipment Choices



Polaris Airtech Camera
AIRTECH-P
page 80

Chair Massager
3900-100-INT
page 14

Bien Air MX2
BIEN-MX2-INT
page 79



RM Monitor
1300RM-INT
page 33

Doctor's Comfort Stool
6176
page 15

Pivot (Left/Right)

Chetco Package



Chetco Package

PATIENT CHAIR + STOOLS (page 14)
Operatory chair 3901INT

DELIVERY HEAD (page 18)
Over the patient delivery 2003INT
Vinyl tubing 4-hole (quantity 4) 0017-010-GRY
Large swivel tray (over the patient) 1110-774

CONFIGURATION (page 26)
Pivot package 8600INT
Pivot cuspidor
w/Durr assistant's instrumentation 1591INT

OPERATORY LIGHTS + MONITOR MOUNTS (page 32)
Halogen light 9081INT
Pivot light post 1112-644
250 watt universal power supply 0014-387

total:

Popular Equipment Choices



Silicone 6-pin & Light Board
1700-175-INT
page 82

Chrome Option
9000-998-CS
page 19

Unit Mount Touchpad
1700-081-CS
page 82

Satelec Scaler
SAT-S-INT
page 81

Bien Air Monitor
Bien-MCX-INT
page 80

Fixed Without Sidebox

Modoc Package



Modoc Package

PATIENT CHAIR + STOOLS (page 14)
Operatory chair 3901INT

DELIVERY HEAD (page 20)
Value IC delivery assembly 2004INT
Vinyl tubing 4-hole (quantity of 3) 0017-010-GRY
Small swivel tray (side delivery) 1110-468
Unit mount touchpad 1700-081-CS

CONFIGURATION (page 30)
Fixed without sidebox 8501INT
Basic cuspidor 1634INT

OPERATORY LIGHTS + MONITOR MOUNTS (page 32)
Halogen light 9081INT
35" fixed without sidebox light post 1110-820
100 Watt power source 0014-389

total:

Popular Equipment Choices



Fixed Vacuum
10751INT
page 31



Small Swivel Tray (side delivery)
1110-468
page 87



Chip-Air Upgrade Kit
1105-109-INT-CS
page 86



Doctor's Deluxe Stool
6126C
page 15



Assistant's Standard Stool
6137C
page 15

Pivot (Left/Right)

shasta package



Shasta Package

PATIENT CHAIR + STOOLS

Operator chair 3901INT (page 14)

DELIVERY HEAD

Large rear mounted delivery 1495INT (page 20)

Durr assistant's instrumentation 0024-181

Vinyl tubing 4-hole (quantity 3) 0017-010-GRY

Flex tray assembly 1800INT

CONFIGURATION

Pivot package 8600INT (page 25)

Less clean water system 1700-355-INT-CS

total:

Popular Equipment Choices



Memory Comfort
3907-999-MC
page 14



Universal Power Supply (250 watt)
0014-387
page 79



Chip-Air Upgrade Kit
1105-109-INT-CS
page 86



Satelec Scaler
SAT-S-INT
page 81



Heated Syringe Conversion Kit
1107-450-INT
page 83

Fixed Without Sidebox

Molala Package



Molala Package

PATIENT CHAIR + STOOLS

Operatory chair 3901INT (page 14)

DELIVERY HEAD

Large rear mounted delivery 1495INT (page 20)

Durr vacuum kit 0024-181
4-hole vinyl HP tubing (quantity of 3) 0017-010-GRY

CONFIGURATION

Fixed without sidebox 8501INT (page 30)
Less clean water system 1700-355-INT
Basic cuspidor 1636INT

total:

Popular Equipment Choices



IV Board
3900-200
page 81



Universal Power Supply (250 watt)
0014-387
page 79



Bien-Air MCX
BIEN-MCX-INT
page 80



Doctor's Deluxe Stool
6126C
page 15



Satelec Scaler
SAT-S-INT
page 81

Section 3 Customization

1 Step One

Select Model & Mounting Position
{if multiple mounting configurations are applicable}



2 Step Two

Select Surface Treatment Options
{powder coat, plastic finish or solid surface}



3 Step Three

Select Handpieces, Ancillary Products & Positioning



4 Step Four

Select Optional Upgrades







monitors

cabinet + wall + ceiling monitor mount assemblies
(monitor screens not included)



Cabinet Mount
Model
1310C (standard)
1310C-T (tall)



Ceiling Mount
Model 1300-C



Wall Mount
Model
1310W (STANDARD)
1310W-T (TALL)

Standard Features	Factory Options	Part #	Total
-------------------	-----------------	--------	-------

monitor mount assembly

- Cabinet mount, internal vertical mount with post
- Wall mount, vertical mounting plate
 - Standard rigid arm
 - Tall rigid arm (additional 1' drop)
- Coax cable
- Low voltage wiring (2 conductor 18 awg wire)
- VGA shielded cable
- ICW Quicklink monitor mount
- Rex positioning handles

monitor mount assembly

- Ceiling mounting plate and shroud
- Drop post (specify mounting height)
- Coax cable
- Low voltage wiring (2 conductor 18 awg wire)
- VGA shielded cable
- ICW Quicklink monitor mount
- Rex positioning

Monitor Requirements:
12 volt with power supply
weight: 8 1/4 to 13 lbs max, width of 19"

Monitor mount assembly model choice:		
S Video, cable pre-installed.....	0014-282	
RCA cables (3 conductor), cable pre-installed	0014-283	

total: _____

****SPECIFY CEILING MOUNTING HEIGHT:**
11', 10', 9' or 8' _____



POWDER COAT SURFACE TREATMENTS (N/C)

Powder coat paint finishes: ☐ White ☐ Forest Grey

DESIGNER FRIENDLY™ SURFACE TREATMENTS

Powder coat paint finishes: ☐ Arctic Silver ☐ Bronze ☐ Charcoal ☐ Pearl ☐ Pewter
☐ Sage ☐ Shadow

Lights

ceiling mount lights



Model 9081-C-INT Halogen light



Model 9073-C-INT LED light

Standard Features

Factory Options

Part

Total

LIGHTS

Ceiling mounting plate and shroud with drop post
specify mounting height

MODEL 9081-C

Automatic on/off activation with override
3-Axis light head movement
Additional bulb
Color temperature, 4,200 to 5,500 Kelvin
Designer Friendly™ powder coat paint light head

MODEL 9073-C-INT

Automatic on/off activation with override
Easy release autoclavable handles
Light source 8 LEDs
Color temperature, 4,200 to 6,000 Kelvin
Designer Friendly™ powder coat paint light head

Light model choice: _____

additional options

MODEL 9073

LEDs assembly with reflectors 9072-012
Left & right handles 9072-013
Protective screen 9072-014

MODEL 9081

Replacement bulb 0014-300

**SPECIFY CEILING MOUNTING HEIGHT:

11', 10', 9' or 8'



POWDER COAT SURFACE TREATMENTS (N/C)

Powder coat paint finishes: ☐ White ☐ Forest Grey

DESIGNER FRIENDLY™ SURFACE TREATMENTS

Powder coat paint finishes: ☐ Arctic Silver ☐ Bronze ☐ Charcoal ☐ Pearl ☐ Pewter
☐ Sage ☐ Shadow

Lights

cabinet + wall mount lights



LED Cabinet
Model
9074C-INT (standard)
9074C-T-INT (tall)

Halogen Cabinet
Model
9091C-INT (standard)
9091C-T-INT (tall)

Halogen Wall
Model
9091W-INT (standard)
9091W-T-INT (tall)

LED Wall
Model
9074W-INT (standard)
9074W-T-INT (tall)

Standard Features

Factory Options

Part

Total

LIGHTS

Cabinet mount, internal vertical mount with post
Wall mount, vertical mounting plate
Standard rigid arm
Tall rigid arm (additional 1' drop)

MODEL 9091

Automatic on/off activation with override
3-Axis light head movement
Additional bulb
Color temperature, 4,200 to 5,500 Kelvin
Designer Friendly™ powder coat paint light head

MODEL 9074

Automatic on/off activation with override
Easy release autoclavable handles
Light source 8 LED lamps
Color temperature, 4,200 to 6,000 Kelvin
Designer Friendly™ powder coat paint light head

light model choice: _____

Cabinet mounting options: (for dimensions see page 97)

Horizontal top cabinet mount
in lieu of internal mount 1110-881-CS
Vertical exterior cabinet mount
in lieu of internal mount 1110-886-CS

additional options

MODEL 9074

LEDs assembly with reflectors 9072-012
Left & right handles 9072-013
Protective screen 9072-014

MODEL 9091

Replacement bulb 0014-300

total:

****SPECIFY CEILING MOUNTING HEIGHT:**

11', 10', 9' or 8'



POWDER COAT SURFACE TREATMENTS (N/C)

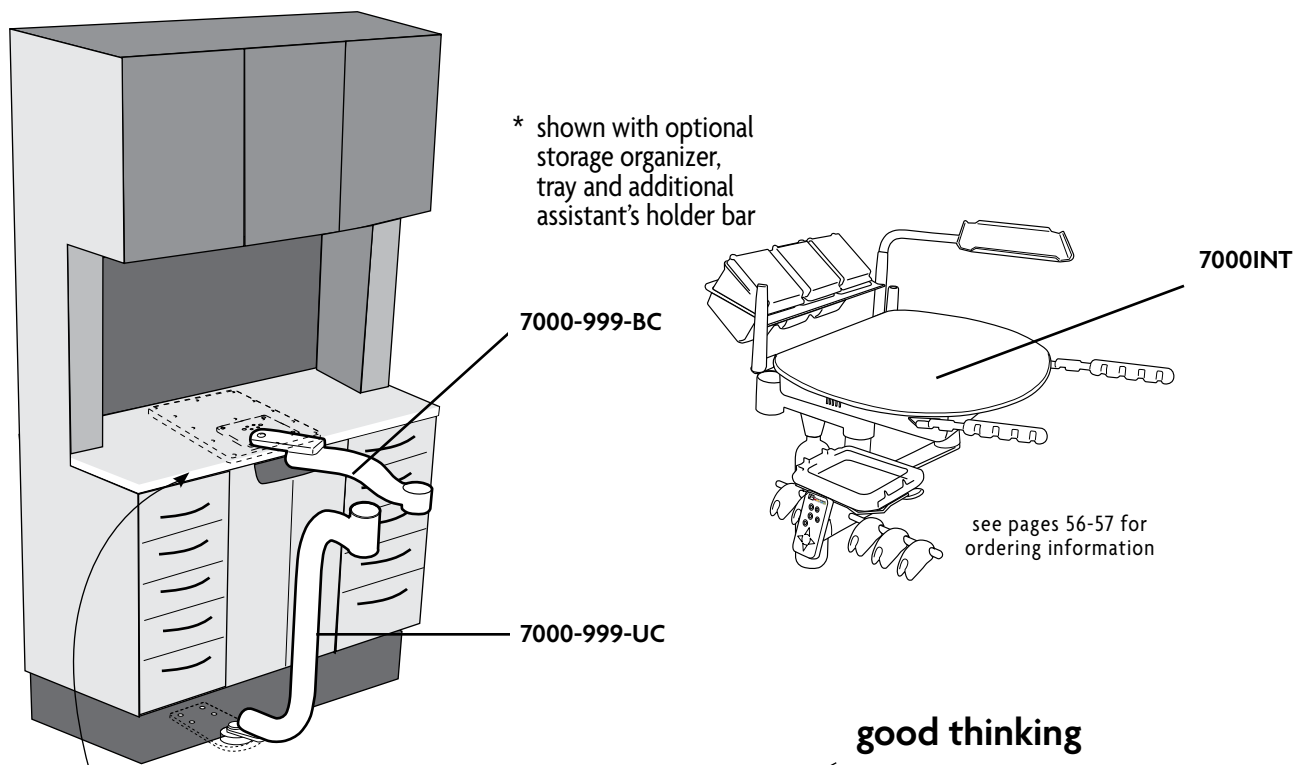
Powder coat paint finishes: ☐ White ☐ Forest Grey

DESIGNER FRIENDLY™ SURFACE TREATMENTS

Powder coat paint finishes: ☐ Arctic Silver ☐ Bronze ☐ Charcoal ☐ Pearl ☐ Pewter
☐ Sage ☐ Shadow

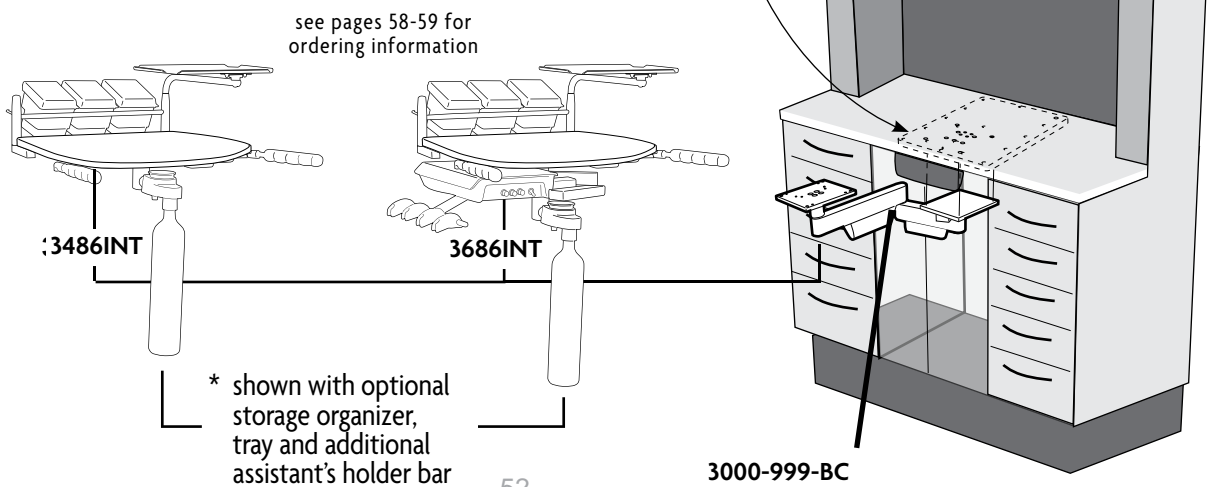
Rear + Side Delivery Systems

cabinetry mounting configurations



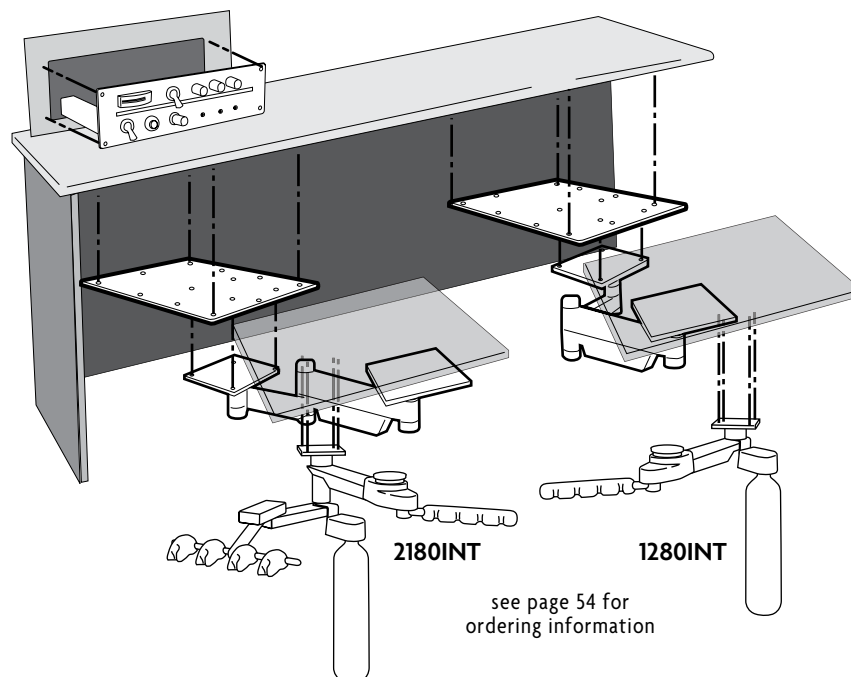
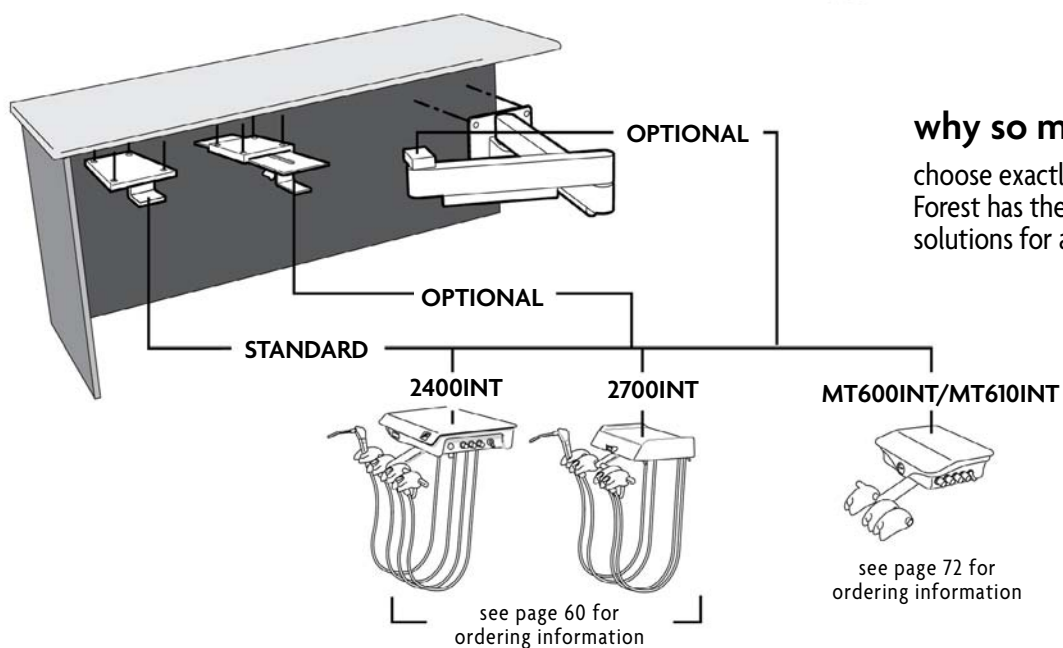
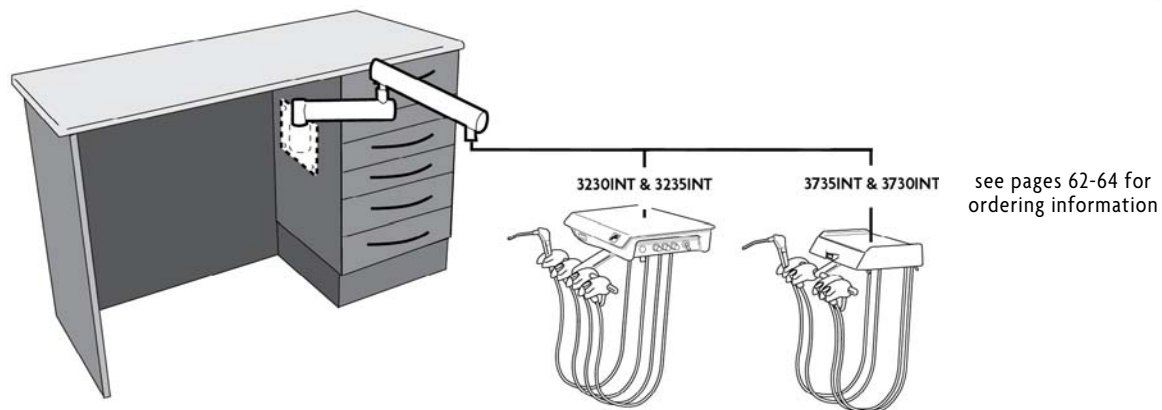
start with a strong foundation

- 3/4" hardened steel 11"x 14 1/2" (pre-installed) mounting plate that bolts to the bottom of your counter top
- the 6"x 6" leveling plate is next, then a set of needle roller bearings with friction adjustment
- a super strong 2 1/2" steel tube scissor arm assembly
- needle roller bearings are used where the two arm sections pivot



Rear + Side Delivery Systems

cabinetry mounting configurations



Rear + Side Delivery Systems

rear beneath counter mount



Model 1280INT

Mounts under counter or floating work surface

Model 1280INT-DURR

Add Durr Vacuum Upgrade:



Mounts under counter or floating work surface

universal heavy-duty
mounting plate optional
(highly recommended) (work surface optional)



mounting arm optional 0023-806



Model 2180INT

Model 2180INT-DURR

Add Durr Vacuum Upgrade:



Standard Features

HORIZONTAL ASSISTANT'S DELIVERY HEAD 1280INT

Central vacuum accessory package, swing mount
arm mounted central vacuum canister
w/disposable solids collector
asepsis 3-way air/water syringe w/tubing, 5'
handpiece tubings factory installed at 5'
autoclavable universal HVE lever valve w/tubing, 5'
autoclavable saliva ejector lever valve w/tubing, 5'
self-contained clean water system, single bottle 1.5-liter
quick disconnect for water bottle
Horizontal surface mount
External umbilical, 7'
Standard utility center w/o housing & cover
air pressure regulator with filter
master air shut-off valve

HORIZONTAL DUO DELIVERY HEAD 2180INT

Same as Assistant's Delivery with additional features
Automatic panel control for three handpieces
Instrument delivery
asepsis 3-way air/water syringe w/tubing, 5'
handpiece tubings factory installed at 5'
pneumatic master control block w/diaphragm
master on/off
individual handpiece pressure adjustment
individual water coolant adjustment
non-retraction water coolant
air coolant adjustment
wet/dry foot control
External umbilical, 7'



POWDER COAT SURFACE TREATMENTS (N/C)

Powder coat paint finishes: ☐ White ☐ Forest Grey

DESIGNER FRIENDLY™ SURFACE TREATMENTS

Powder coat paint finishes: ☐ Arctic Silver ☐ Bronze ☐ Charcoal ☐ Pearl ☐ Pewter
☐ Sage ☐ Shadow

customize your forest delivery:

- Step 1: Select model and mounting position
 Step 2: Select surface treatment options
 Step 3: Select handpiece positions
 Step 4: Select optional upgrades

model selected:

Assistant's Delivery:

- ☐ 1280INT
☐ 1280INT-DURR
☐ 2180INT
☐ 2180INT-DURR

select handpiece positions:

handpiece positions	description	#1	#2	#3	#4	#5	part #	total
SYRINGE	silicone sheath, gray	✓					INCLUDED	
4-HOLE (vinyl)	vinyl tubing, gray						0017-010-GRY	
6-PIN (vinyl)	vinyl tubing, gray						0017-603-GRY	
4-HOLE (silicone)	silicone tubing, gray						0017-693-INT	
6-PIN (silicone)	silicone tubing, gray						0017-614-INT	
SCALER	Satelec SP Newtron Piezo scaler						SAT-S-INT	
LED SCALER	Satelec LED Piezo scaler						SAT-S-LED-INT	
ELECTRIC MICRO-MOTOR	BIEN-AIR MCX with Rheostat control						BIEN-MCX-INT	
ELECTRIC MICRO-MOTOR (with touchpad)	BIEN-AIR MX2 with Touchpad & Endo control						BIEN-MX2-INT	
HEATED SYRINGE	conversion kit (1) syringe (vinyl)						1107-450-INT	
ADDITIONAL HP, WET	REQUIRED for a WET 4th HP position						1100-189-INT	
ADDITIONAL HP, DRY	REQUIRED for a DRY 4th HP position						1100-190-INT	
Intra-Oral Camera	Factory installed Airtech Polaris camera						AIRTECH-P	
NO TUBING	leave the block open						OPEN	
PLUG BLOCK	plug & close the block						PLUG	

- REQUIRES HP illumination circuit board & EITHER 250 watt power supply or 48 watt power supply (board can accommodate (2) HP positions)
 250 watt power supply source required when ordering chair mounted light or two or more ancillary devices
 When a fourth HP position is ordered, an ADDITIONAL DRY or WET HP position must be ordered

optional upgrades:

Description	Part #	Total
Upgrade Kit: wet/dry foot control with chip air	1105-109-INT-CS	
HP illumination circuit board with time delay and adjustable voltage, accommodates 2 HP positions*		
*Required with 6-pin tubing selection	0014-357	
Power supplies (page 79)		
25 watt power supply	0014-394	
35 watt power supply (heated syringe)	0014-124	
48 watt power supply (motors, scalers)	0014-390	
250 watt universal power supply*		
*Required when ordering two or more ancillary devices or when ordering chair mounted light	0014-387	
Slide mount with swivel, 7 ³ / ₈ " extension	1700-141	
Touchpad for 3900 chair (25ft. Cable)	1700-081-1-CS	
Chrome accents	9000-998-CS	
Floating work surface to under counter arm assembly 20"	0023-806	
Universal heavy-duty mounting plate, 11" x 14.5"	0010-086-BLK	
Universal heavy-duty mounting plate, 10" x 24"	0010-084-BLK	
Standard color laminate work surface, 19" x 24"	0010-652-LAM	
Standard color solid work surface, 19" x 24"	0010-652-SS	
Standard utility center, housing & cover	1115-020	
Additional umbilical (per foot)	1115-999-CS	
Routing valve kit w/water shutoff & regulator/factory installed	1115-315-CS	
Less self-contained clean water system	1700-355-INT	
Water shut-off valve & regulator kit	1115-297-INT	

total:

Rear + Side Delivery Systems

7000 Series: rear mount, side delivery



Model 7000INT



Add Durr Vacuum Upgrade:

Model 7000INT-DURR



Optional storage organizer
swivel tray
1110-179-CS and 1110-909-CS

Select one of the following four mounting options for the 7000INT (N/C):



beneath counter mount :
7000-999-BC



floor mount :
7000-999-FM



under cabinet mount :
7000-999-UC



wall mount :
7000-999-WM

Standard Features

DUO SWING DELIVERY HEAD 7000 SERIES

Duo control

- automatic control w/lockout feature for three handpieces
- asepsis 3-way air/water syringe w/tubing, 4'
- handpiece tubings factory installed at 4'
- pneumatic master control block w/diaphragm
- master on/off
- individual handpiece pressure adjustment
- individual water coolant adjustment
- non-retraction water coolant
- air coolant adjustment
- self-contained clean water system, single bottle 1.5 liter
- quick disconnect for water bottle
- wet/dry foot control

Height adjustable work surface, 5"

Central vacuum accessory package

- asepsis 3-way air/water syringe w/tubing, 5'
- autoclavable standard HVE lever valve w/tubing, 5'
- autoclavable saliva ejector lever valve w/tubing, 5'

Assistant's quad holder assembly

Solid work surface, 19" x 24"

Universal heavy duty mounting plate

- 11" x 14 1/2", beneath counter (7000BC)

Laminate wall mount panel 18" x 24" (7000WM)

Air pressure regulator with filter

Master air shut-off valve

Umbilical, 7'

POWDER COAT SURFACE TREATMENTS, N/C

Powder coat paint finishes: ☐ White ☐ Forest Grey

DESIGNER FRIENDLY SURFACE TREATMENTS

Powder coat paint finishes: ☐ Arctic Silver ☐ Bronze ☐ Charcoal ☐ Pearl ☐ Pewter
(10% upcharge) ☐ Sage ☐ Shadow

Solid work surface colors:

Corian: ☐ Antarctica ☐ Blue Pebble ☐ Doeskin ☐ Fossil ☐ Savannah
Gibraltar: ☐ Arctic Melange ☐ Baja Melange ☐ Frosty White Mirage ☐ Light Beige Mirage ☐ Midnight Melange ☐ Northern Melange
Meganite: ☐ Goldrush Gemstone ☐ Moonstone

Laminate work surface colors in lieu of solid surface 0023-776-LAM:

☐ Almond ☐ Folkstone ☐ Graphite ☐ Oyster Gray ☐ Surf ☐ Shadow
☐ White Blanc

Laminate wall mount panel (Model 7000WM):

☐ Almond ☐ Folkstone ☐ Graphite ☐ Oyster Gray ☐ Surf ☐ Shadow
☐ White Blanc



customize your forest delivery:

- Step 1: Select model and mounting position
 Step 2: Select surface treatment options
 Step 3: Select handpiece positions
 Step 4: Select optional upgrades



model selected:

- Mounting Positions for:** ☐ 7000INT
☐ 7000INT-DURR
- Beneath Counter Mount:** ☐ 7000-999-BC
Floor Mount: ☐ 7000-999-FM
Under Cabinet Mount: ☐ 7000-999-UC
Wall Mount: ☐ 7000-999-WM



select handpiece positions:

handpiece positions	description	#1	#2	#3	#4	#5	part #	total
SYRINGE	silicone sheath, gray	✓					INCLUDED	
4-HOLE (vinyl)	vinyl tubing, gray						0017-010-GRY	
■ 6-PIN (vinyl)	vinyl tubing, gray						0017-603-GRY	
4-HOLE (silicone)	silicone tubing, gray						0017-693-INT	
■ 6-PIN- (silicone)	silicone tubing, gray						0017-614-INT	
● SCALER	Satelec SP Newtron Piezo scaler						SAT-S-INT	
● LED SCALER	Satelec LED Piezo scaler						SAT-S-LED-INT	
● ELECTRIC MICRO-MOTOR	BIEN-AIR MCX with Rheostat control						BIEN-MCX-INT	
● ELECTRIC MICRO-MOTOR (with touchpad)	BIEN-AIR MX2 with Touchpad & Endo control						BIEN-MX2-INT	
● HEATED SYRINGE	conversion kit (I) syringe (vinyl)						1107-450-INT	
▲ ADDITIONAL HP, WET	REQUIRED for a WET 4th HP position						1100-189-INT	
▲ ADDITIONAL HP, DRY	REQUIRED for a DRY 4th HP position						1100-190-INT	
Intra-Oral Camera	Factory installed Airtech Polaris camera						AIRTECH-P	
NO TUBING	leave the block open						OPEN	
PLUG BLOCK	plug & close the block						PLUG	

- REQUIRES HP illumination circuit board & EITHER 250 watt power supply or 48 watt power supply (board can accommodate (2) HP positions)
 ● 250 watt power supply source required when ordering chair mounted light or two or more ancillary devices
 ▲ When a fourth HP position is ordered, an ADDITIONAL DRY or WET HP position must be ordered



optional upgrades:

Description	Part #	Total
Upgrade Kit: wet/dry foot control with chip air	1105-109-INT-CS	
Quick disconnect w/flow control. 1/4" (for water)	0016-454-CS	
Quick disconnect w/flow control. 3/8" (for air)	0016-456-CS	
HP illumination circuit board with time delay and adjustable voltage, accommodates 2 HP positions*		
*Required with 6-pin tubing selection	0014-357	
Power supplies (page 79)		
25 watt power supply	0014-394	
35 watt power supply (heated syringe)	0014-124	
48 watt power supply (motors, scalers)	0014-390	
250 watt universal power supply*		
*Required when ordering two or more ancillary devices or when ordering chair mounted light	0014-387	
Storage organizer with frame and mouting towers	1110-179-CS	
Swivel tray	1110-909-CS	
Touchpad for 3900 chair (25 ft. cable)	1700-081-I-CS	
Chrome accents	9000-998-CS	
Monitor mount assembly (monitor screen not included)	1300-025	
Standard utility center housing and cover	1115-020	
Additional umbilical (per foot)	1115-999-CS	
Routing valve kit w/water shutoff & regulator/factory installed	1115-315-CS	
Less self-contained clean water system	1700-355-INT-CS	
Water shut-off valve & regulator kit	1115-297-INT	

total:

Rear + Side Delivery Systems

rear wall + beneath counter mount, side delivery



Model 3486INT

Wall Mount (N/C)
MODEL 3000-999-WM



Beneath Counter Mount (N/C)
MODEL 3000-999-BC



Model 3686INT



Add Durr Vacuum Upgrade:
Model 3486INT-DURR



Add Durr Vacuum Upgrade:
Model 3686INT-DURR

Standard Features

ASSISTANT'S SWING DELIVERY HEAD 3486INT

Beneath counter mount
Central vacuum accessory package
with disposable solids collector
3-way air/water syringe with tubing
handpiece tubings factory installed at 5'
autoclavable standard HVE lever valve with tubing, 5'
autoclavable SE lever valve with tubing, 5'
self-contained clean water system, single bottle 1.5 liter
quick disconnect for water bottle
Assistant's quad holder assembly
Laminate work surface, 19" x 24"
Air pressure regulator with filter
Master shut-off valve
Umbilical, 7'

BENEATH COUNTER MOUNT

Beneath counter mount rigid arm
Beneath counter heavy duty mounting plate 11" x 14.5"

WALL MOUNT

Wall mount rigid arm assembly

DUO SWING DELIVERY HEAD 3686INT

Same as 3486INT, with additional features
Standard IC delivery head
automatic control for three handpieces
3-way air/water syringe with tubing, 4'
handpiece tubings factory installed at 5'
Pneumatic master control block with diaphragm master on/off
individual handpiece pressure adjustment
individual water coolant adjustment
non-retraction water coolant
air coolant adjustment
handpiece exhaust filter/oil collector
wet/dry foot control

POWDER COAT SURFACE TREATMENTS (N/C)

Powder coat paint finishes: ☐ White ☐ Forest Grey

DESIGNER FRIENDLY™ SURFACE TREATMENTS

Powder coat paint finishes: ☐ Arctic Silver ☐ Bronze ☐ Charcoal ☐ Pearl ☐ Pewter
(10% upcharge) ☐ Sage ☐ Shadow

Laminate finishes: ☐ Almond ☐ White Blanc ☐ Folkstone ☐ Graphite ☐ Oyster Gray
☐ Shadow ☐ Surf

Plastic finishes: ☐ White ☐ Forest Grey ☐ Greywood (carbon fiber) ☐ Laser Leather (carbon fiber) ☐ Lemans (carbon fiber)



customize your forest delivery:

- Step 1: Select model and mounting position
 Step 2: Select surface treatment options
 Step 3: Select handpiece positions
 Step 4: Select optional upgrades



model selected:

- 3486INT:** ☐ 3486INT
☐ 3486INT-DURR
3686INT: ☐ 3686INT
☐ 3686INT-DURR

- Wall Mount:** ☐ 3000-999-WM
Beneath Counter Mount: ☐ 3000-999-BC



select handpiece positions:

handpiece positions	description	#1	#2	#3	#4	#5	part #	total
SYRINGE	silicone sheath, gray	✓					INCLUDED	
4-HOLE (vinyl)	vinyl tubing, gray						0017-010-GRY	
■ 6-PIN (vinyl)	vinyl tubing, gray						0017-603-GRY	
4-HOLE (silicone)	silicone tubing, gray						0017-693-INT	
■ 6-PIN- (silicone)	silicone tubing, gray						0017-614-INT	
● SCALER	Satelec SP Newtron Piezo scaler						SAT-S-INT	
● LED SCALER	Satelec LED Piezo scaler						SAT-S-LED-INT	
● ELECTRIC MICRO-MOTOR	BIEN-AIR MCX with Rheostat control						BIEN-MCX-INT	
● ELECTRIC MICRO-MOTOR (with touchpad)	BIEN-AIR MX2 with Touchpad & Endo control						BIEN-MX2-INT	
● HEATED SYRINGE	conversion kit (I) syringe (vinyl)						1107-450-INT	
▲ ADDITIONAL HP, WET	REQUIRED for a WET 4th HP position						1100-189-INT	
▲ ADDITIONAL HP, DRY	REQUIRED for a DRY 4th HP position						1100-190-INT	
Intra-Oral Camera	Factory installed Airtech Polaris camera						AIRTECH-P	
NO TUBING	leave the block open						OPEN	
PLUG BLOCK	plug & close the block						PLUG	

■ REQUIRES HP illumination circuit board & EITHER 250 watt power supply or 48 watt power supply (board can accommodate (2) HP positions)

● 250 watt power supply source required when ordering chair mounted light or two or more ancillary devices

▲ When a fourth HP position is ordered, an ADDITIONAL DRY or WET HP position must be ordered



optional upgrades:

Description	Part #	Total
Upgrade Kit: wet/dry foot control with chip air	1105-109-INT-CS	
Quick disconnect w/flow control 1/4" (for water)	0016-454-CS	
Quick disconnect w/flow control 3/8" (for air)	0016-456-CS	
HP illumination circuit board with time delay and adjustable voltage, accommodates 2 HP positions*		
*Required with 6-pin tubing selection	0014-357	
Power supplies (page 79)		
25 watt power supply	0014-394	
35 watt power supply (heated syringe)	0014-124	
48 watt power supply (motors, scalers)	0014-390	
250 watt universal power supply*		
*Required when ordering two or more ancillary devices or when ordering chair mounted light	0014-387	
Storage organizer with frame and mouting towers	1110-179	
Swivel tray	1110-909-CS	
Touchpad for 3900 chair (25 ft. cable)	1700-081-I-CS	
Chrome accents	9000-998-CS	
Monitor mount assembly (monitor screen not included)	1300-025	
Less standard utility center housing and cover	1115-020	
Additional umbilical (per foot)	1115-999-CS	
Routing valve kit w/water shutoff & regulator/factory installed.	1115-315-CS	
Less self-contained clean water system	1700-355-INT-CS	
Water shut-off valve & regulator kit	1115-297-INT	

total:

Rear + Side Delivery Systems

rear or side beneath counter mount



Model 2400INT



beneath counter mount with swivel included

(beneath counter slide optional see page 53)

CABINET MOUNTING CONFIGURATION
(see pages 52-53)



Model 2700INT

Standard Features

DOCTOR IC DELIVERY HEAD 2400INT

Beneath counter swivel mount (work surface not included)
Standard IC delivery head

- automatic control for three handpieces
- asepsis 3-way air/water syringe w/tubing, 5'
- handpiece tubings factory installed at 5'
- pneumatic master control block w/diaphragm
- master on/off
- individual handpiece pressure adjustment
- individual water coolant adjustment
- non-retraction water coolant
- air coolant adjustment
- handpiece flush
- self-contained clean water system, single bottle 1.5 liter
- quick disconnect for water bottle
- wet/dry foot control

External braided 7' umbilical

- air pressure regulator with filter
- master air shut-off valve

DOCTOR VALUE DELIVERY HEAD 2700INT

Same as 2400INT unit above, with additional features
Value delivery head
Individual pinch valve control blocks

Shipping weight:

2400INT: 28 lb / 13 kg
2700INT: 28 lb / 13 kg

PLEASE NOTE:

- CABINET MOUNTING CONFIGURATIONS, see pages 52-53
- Beneath counter mount with swivel included
- Beneath counter slide optional see page 53
- Mounting plate dimensions see page 53



POWDER COAT SURFACE TREATMENTS (N/C)

Powder coat paint finishes: ☐ White ☐ Forest Grey

Plastic finishes: ☐ White ☐ Forest Grey ☐ Greywood (carbon fiber) ☐ Laser Leather (carbon fiber) ☐ Lemans (carbon fiber)

DESIGNER FRIENDLY™ SURFACE TREATMENTS

Powder coat paint finishes: ☐ Arctic Silver ☐ Bronze ☐ Charcoal ☐ Pearl ☐ Pewter
(10% upcharge) ☐ Sage ☐ Shadow



customize your forest delivery:

- Step 1: Select model and mounting position
 Step 2: Select surface treatment options
 Step 3: Select handpiece positions
 Step 4: Select optional upgrades



model selected:

Beneath Counter Mount: ☐ 2400INT
☐ 2700INT



select handpiece positions:

handpiece positions	description	#1	#2	#3	#4	#5	part #	total
SYRINGE	silicone sheath, gray	✓					INCLUDED	_____
4-HOLE (vinyl)	vinyl tubing, gray						0017-010-GRY	_____
■ 6-PIN (vinyl)	vinyl tubing, gray						0017-603-GRY	_____
4-HOLE (silicone)	silicone tubing, gray						0017-693-INT	_____
■ 6-PIN- (silicone)	silicone tubing, gray						0017-614-INT	_____
● SCALER	Satelec SP Newtron Piezo scaler						SAT-S-INT	_____
● LED SCALER	Satelec LED Piezo scaler						SAT-S-LED-INT	_____
● ELECTRIC MICRO-MOTOR	BIEN-AIR MCX with Rheostat control						BIEN-MCX-INT	_____
● ELECTRIC MICRO-MOTOR (with touchpad)	BIEN-AIR MX2 with Touchpad & Endo control						BIEN-MX2-INT	_____
● HEATED SYRINGE	conversion kit (I) syringe (vinyl)						1107-450-INT	_____
▲ ADDITIONAL HP, WET	REQUIRED for a WET 4th HP position						1100-189-INT	_____
▲ ADDITIONAL HP, DRY	REQUIRED for a DRY 4th HP position						1100-190-INT	_____
Intra-Oral Camera	Factory installed Airtech Polaris camera						AIRTECH-P	_____
NO TUBING	leave the block open						OPEN	_____
PLUG BLOCK	plug & close the block						PLUG	_____

■ REQUIRES HP illumination circuit board & EITHER 250 watt power supply or 48 watt power supply (board can accommodate (2) HP positions)

● 250 watt power supply source required when ordering chair mounted light or two or more ancillary devices

▲ When a fourth HP position is ordered, an ADDITIONAL DRY or WET HP position must be ordered



optional upgrades:

Description	Part #	Total
Upgrade Kit: wet/dry foot control with chip air	1105-109-INT-CS	_____
Quick disconnect w/flow control, 1/4" (specify air/water)	0016-455-CS	_____
HP illumination circuit board with time delay and adjustable voltage, accommodates 2 HP positions*		_____
*Requires power supply	0014-357	_____
Power supplies (page 79)		_____
25 watt power supply	0014-394	_____
35 watt power supply (heated syringe)	0014-124	_____
48 watt power supply (motors, scalers)	0014-390	_____
250 watt universal power supply*		_____
*Required when ordering two or more ancillary devices or when ordering chair mounted light	0014-387	_____
Slide mount with swivel, 7 5/8" extension	1700-140	_____
Folding arm assembly, 8" x 12" with wall mount	1110-115-CS	_____
Touchpad for 3900 chair	1700-081-1-CS	_____
Chrome accents	9000-998-CS	_____
Standard utility center housing and cover	1115-020	_____
Additional umbilical (per foot)	1115-999-CS	_____
Routing valve kit w/water shutoff & regulator/factory installed	1115-315-CS	_____
Less self-contained clean water system	1700-355-INT-CS	_____
Water shut-off valve & regulator kit	1115-297-INT	_____

total:

Rear + Side Delivery Systems

side cabinet & wall mount- Standard IC



Model 3230INT standard IC delivery head

22" rigid arm wall mount



Model 3235INT standard IC delivery head

12" rigid arm cabinet

Standard Features

DOCTOR DELIVERY HEAD 3230INT/3235INT

- Standard IC delivery head
 - automatic control for three handpieces
 - asepsis 3-way air/water syringe w/tubing, 5'
 - handpiece tubings factory installed at 5'
 - pneumatic master control block w/diaphragm
 - master on/off
 - individual handpiece pressure adjustment
 - individual water coolant adjustment
 - non-retraction water coolant
 - air coolant adjustment
 - handpiece flush
 - self-contained clean water system, single bottle 1.5 liter
 - quick disconnect for water bottle
 - wet/dry foot control
- Flexible control arm with pneumatic brake (3235INT)
 - cabinet verical mount 12" rigid arm & 18" flex arm
- Flexible control arm with pneumatic break (3230INT)
 - wall verical mount 22" rigid arm & 18" flex arm
- External 5' umbilical
- Standard utility center housing and cover (3230INT)
 - air pressure regulator with filter
 - master air shut-off valve

PLEASE NOTE:

- Cabinet mounting configurations, see pages 52-53
- Mounting plate dimensions, see page 53
- Beneath counter slide optional, see page 53



POWDER COAT SURFACE TREATMENTS (N/C)

Powder coat paint finishes: ☐ White ☐ Forest Grey

Plastic finishes: ☐ White ☐ Forest Grey ☐ Greywood (carbon fiber) ☐ Laser Leather (carbon fiber) ☐ Lemans (carbon fiber)

DESIGNER FRIENDLY™ SURFACE TREATMENTS

Powder coat paint finishes: ☐ Arctic Silver ☐ Bronze ☐ Charcoal ☐ Pearl ☐ Pewter
(10% upcharge) ☐ Sage ☐ Shadow

customize your forest delivery:

- Step 1: Select model and mounting position
 Step 2: Select surface treatment options
 Step 3: Select handpiece positions
 Step 4: Select optional upgrades

model selected:

Cabinet Mount:
 Wall Mount:

- ☐ 3235INT
☐ 3230INT

select handpiece positions:

handpiece positions	description	#1	#2	#3	#4	#5	part #	total
SYRINGE	silicone sheath, gray	✓					INCLUDED	
4-HOLE (vinyl)	vinyl tubing, gray						0017-010-GRY	
6-PIN (vinyl)	vinyl tubing, gray						0017-603-GRY	
4-HOLE (silicone)	silicone tubing, gray						0017-693-INT	
6-PIN- (silicone)	silicone tubing, gray						0017-614-INT	
SCALER	Satelec SP Newtron Piezo scaler						SAT-S-INT	
LED SCALER	Satelec LED Piezo scaler						SAT-S-LED-INT	
ELECTRIC MICRO-MOTOR	BIEN-AIR MCX with Rheostat control						BIEN-MCX-INT	
ELECTRIC MICRO-MOTOR (with touchpad)	BIEN-AIR MX2 with Touchpad & Endo control						BIEN-MX2-INT	
HEATED SYRINGE	conversion kit (I) syringe (vinyl)						1107-450-INT	
ADDITIONAL HP, WET	REQUIRED for a WET 4th HP position						1100-189-INT	
ADDITIONAL HP, DRY	REQUIRED for a DRY 4th HP position						1100-190-INT	
Intra-Oral Camera	Factory installed Airtech Polaris camera						AIRTECH-P	
NO TUBING	leave the block open						OPEN	
PLUG BLOCK	plug & close the block						PLUG	

- REQUIRES HP illumination circuit board & EITHER 250 watt power supply or 48 watt power supply (board can accommodate (2) HP positions)
 250 watt power supply source required when ordering chair mounted light or two or more ancillary devices
 When a fourth HP position is ordered, an ADDITIONAL DRY or WET HP position must be ordered

optional upgrades:

Description	Part #	Total
Upgrade Kit: wet/dry foot control with chip air	1105-109-INT-CS	
Quick disconnect w/flow control, 1/4" (specify air/water)	0016-455-CS	
Additional brake handle (left side)	0023-642-CS	
Swivel tray, arm mounted (over delivery head)	1110-468	
Laminate wall mount panel, 18" x 24"	1110-498	
HP illumination circuit board with time delay and adjustable voltage, accommodates 2 HP positions*		
Required with 6-pin tubing selection	0014-357	
Power supplies (page 79)		
25 watt power supply	0014-394	
35 watt power supply (heated syringe)	0014-124	
48 watt power supply (motors, scalers)	0014-390	
250 watt universal power supply*		
*Required when ordering two or more ancillary devices or when ordering chair mounted light	0014-387	
Touchpad for 3900 chair (25ft. Cable)	1700-081-I-CS	
Chrome accents	9000-998-CS	
Standard utility center housing and cover (3235INT)	1115-020	
Less standard utility center housing and cover (3230INT)	1115-020-CS	
Additional umbilical (per foot)	1115-999-CS	
Routing valve kit w/water shutoff & regulator/factory installed	1115-315-CS	
Less self-contained clean water system	1700-355-INT-CS	
Water shut-off valve & regulator kit	1115-297-INT	

total:

Rear + Side Delivery Systems

side cabinet and wall mount- Value IC



Model 3730INT value delivery head



Model 3735INT Value delivery head

Please note: Beneath counter slide optional

Standard Features

DOCTOR DELIVERY HEAD 3730INT/3735INT

Value delivery head

- automatic control for three handpieces
- asepsis 3-way air/water syringe w/tubing, 5'
- handpiece tubings factory installed at 5'
- individual pinch valve control blocks
- master on/off
- individual handpiece pressure adjustment
- individual water coolant adjustment
- non-retraction water coolant
- air coolant adjustment
- handpiece flush
- self-contained clean water system, single bottle 1.5 liter
- quick disconnect for water bottle
- wet/dry foot control

Flexible control arm with pneumatic brake (3735INT)
cabinet vertical mount 12" rigid arm and 18" flex arm

Flexible control arm with pneumatic brake (3730INT)
wall vertical mount 22" rigid arm and 18" flex arm

External 5' umbilical

Standard utility center housing and cover (3730INT)

Air pressure regulator with filter

Master air shut-off valve

POWDER COAT SURFACE TREATMENTS (N/C)

Powder coat paint finishes: ☐ White ☐ Forest Grey

Plastic finishes: ☐ White ☐ Forest Grey ☐ Greywood (carbon fiber) ☐ Laser Leather (carbon fiber) ☐ Lemans (carbon fiber)

DESIGNER FRIENDLY™ SURFACE TREATMENTS

Powder coat paint finishes: ☐ Arctic Silver ☐ Bronze ☐ Charcoal ☐ Pearl ☐ Pewter
(10% upcharge) ☐ Sage ☐ Shadow



customize your forest delivery:

- Step 1: Select model and mounting position
 Step 2: Select surface treatment options
 Step 3: Select handpiece positions
 Step 4: Select optional upgrades



model selected:

Wall Mount: ☐ 3735INT
 Cabinet Mount: ☐ 3730INT



optional upgrades:

handpiece positions	description	#1	#2	#3	#4	#5	part #	total
SYRINGE	silicone sheath, gray	✓					INCLUDED	
4-HOLE (vinyl)	vinyl tubing, gray						0017-010-GRY	
■ 6-PIN (vinyl)	vinyl tubing, gray						0017-603-GRY	
4-HOLE (silicone)	silicone tubing, gray						0017-693-INT	
■ 6-PIN- (silicone)	silicone tubing, gray						0017-614-INT	
● SCALER	Satelec SP Newtron Piezo scaler						SAT-S-INT	
● LED SCALER	Satelec LED Piezo scaler						SAT-S-LED-INT	
● ELECTRIC MICRO-MOTOR	BIEN-AIR MCX with Rheostat control						BIEN-MCX-INT	
● ELECTRIC MICRO-MOTOR (with touchpad)	BIEN-AIR MX2 with Touchpad & Endo control						BIEN-MX2-INT	
● HEATED SYRINGE	conversion kit (I) syringe (vinyl)						1107-450-INT	
▲ ADDITIONAL HP, WET	REQUIRED for a WET 4th HP position						1100-189-INT	
▲ ADDITIONAL HP, DRY	REQUIRED for a DRY 4th HP position						1100-190-INT	
Intra-Oral Camera	Factory installed Airtech Polaris camera						AIRTECH-P	
NO TUBING	leave the block open						OPEN	
PLUG BLOCK	plug & close the block						PLUG	

- REQUIRES HP illumination circuit board & EITHER 250 watt power supply or 48 watt power supply (board can accommodate (2) HP positions)
 ● 250 watt power supply source required when ordering chair mounted light or two or more ancillary devices
 ▲ When a fourth HP position is ordered, an ADDITIONAL DRY or WET HP position must be ordered



optional upgrades:

Description	Part #	Total
Upgrade Kit: wet/dry foot control with chip air	1105-109-INT-CS	
Quick disconnect w/flow control, 1/4" (specify air/water)	0016-455-CS	
Swivel tray, arm mounted (over delivery head)	1110-468	
Laminate wall mount panel, 18" x 24"	1110-498	
HP illumination circuit board with time delay and adjustable voltage, accommodates 2 HP positions*		
*Requires power supply	0014-357	
Additional brake handle (left side)	0023-642-CS	
Chrome accents	9000-998-CS	
Power supplies (page 79)		
25 watt power supply	0014-394	
35 watt power supply (heated syringe)	0014-124	
48 watt power supply (motors, scalers)	0014-390	
250 watt universal power supply*		
*Required when ordering two or more ancillary devices or when ordering chair mounted light	0014-387	
Touchpad for 3900 chair (25ft. Cable)	1700-081-I-CS	
Standard utility center, housing & cover (3735INT)	1115-020	
Laminate wall mount panel, 18" x 24"	1110-498	
Less standard utility center housing and cover (3730INT)	1115-020-CS	
Additional umbilical (per foot)	1115-999-CS	
Routing valve kit w/water shutoff & regulator/factory installed	1115-315-CS	
Less self-contained clean water system	1700-355-INT-CS	
Water shut-off valve & regulator kit	1115-297-INT	

total:

Mobile Carts



Model 5200INT



Model 5400INT



DURR electric vacuum

Standard Features

DOCTOR CART 5200INT

Automatic control for up to four handpieces
 3-way air/water syringe w/tubing, 4'
 handpiece tubings factory installed at 4'
 pneumatic master control block w/diaphragm
 Master on/off
 individual handpiece pressure adjustment
 individual water coolant adjustment
 non-retraction water coolant
 air coolant adjustment
 handpiece flush
 self-contained clean water system, single bottle 1.5 liter
 quick disconnect for water bottle
 wet/dry foot control
 Adjustable height frame, 26" to 35"
 Twin wheel hard floor casters
 External 7' umbilical
 Standard utility center with housing and cover
 air pressure regulator with filter
 master air shut-off valve

DUO CART 5400INT

Same as 5200INT with additional features
 Central vacuum canister with disposable solids collector
 autoclavable standard HVE lever valve with tubing, 4'
 autoclavable SE lever valve with tubing, 4'

POWDER COAT SURFACE TREATMENTS (N/C)

Powder coat paint finishes: ☐ White ☐ Forest Grey

Plastic finishes: ☐ White ☐ Forest Grey ☐ Greywood (carbon fiber) ☐ Laser Leather (carbon fiber) ☐ Lemans (carbon fiber)

DESIGNER FRIENDLY™ SURFACE TREATMENTS

Powder coat paint finishes: ☐ Arctic Silver ☐ Bronze ☐ Charcoal ☐ Pearl ☐ Pewter
 (10% upcharge) ☐ Sage ☐ Shadow



customize your forest delivery:

- Step 1: Select mobile cart
 Step 2: Select surface treatment options
 Step 3: Select handpiece positions
 Step 4: Select optional upgrades



model selected:

Mobile Cart:

- ☐ 5200INT
☐ 5400INT



select handpiece positions:

handpiece positions	description	#1	#2	#3	#4	#5	part #	total
SYRINGE	silicone sheath, gray	✓					INCLUDED	
4-HOLE (vinyl)	vinyl tubing, gray						0017-010-GRY	
■ 6-PIN (vinyl)	vinyl tubing, gray						0017-603-GRY	
4-HOLE (silicone)	silicone tubing, gray						0017-693-INT	
■ 6-PIN- (silicone)	silicone tubing, gray						0017-614-INT	
● SCALER	Satelec SP Newtron Piezo scaler						SAT-S-INT	
● LED SCALER	Satelec LED Piezo scaler						SAT-S-LED-INT	
● ELECTRIC MICRO-MOTOR	BIEN-AIR MCX with Rheostat control						BIEN-MCX-INT	
● ELECTRIC MICRO-MOTOR (with touchpad)	BIEN-AIR MX2 with Touchpad & Endo control						BIEN-MX2-INT	
● HEATED SYRINGE	conversion kit (I) syringe (vinyl)						1107-450-INT	
▲ ADDITIONAL HP, WET	REQUIRED for a WET 4th HP position						1100-189-INT	
▲ ADDITIONAL HP, DRY	REQUIRED for a DRY 4th HP position						1100-190-INT	
Intra-Oral Camera	Factory installed Airtech Polaris camera						AIRTECH-P	
NO TUBING	leave the block open						OPEN	
PLUG BLOCK	plug & close the block						PLUG	

- REQUIRES HP illumination circuit board & EITHER 250 watt power supply or 48 watt power supply (board can accommodate (2) HP positions)
 ● 250 watt power supply source required when ordering chair mounted light or two or more ancillary devices
 ▲ When a fourth HP position is ordered, an ADDITIONAL DRY or WET HP position must be ordered



optional upgrades:

Description	Part #	Total
Durr electric vacuum (HVE/SE) (5400INT only).....	0024-181	
Upgrade Kit: wet/dry foot control with chip air	1105-109-INT-CS	
Power supplies (page 79)		
48 watt power supply (motors, scalers)	0014-390	
HP illumination board with time delay and adjustable voltage, accommodates 2 HP positions*		
*Requires either 250 watt or 25 watt power supply	0014-357	
Additional standard autoclavable HVE		
with HVE tubing, 5' and autoclavable oral dry cup (5400).....	1400-113-CS	
Quick disconnect with flow control 1/4" (for water).....	0016-454-CS	
Quick disconnect with flow control 3/8" (for air)	0016-456-CS	
Foot control support shelf, clamps to 2" base	0023-665	
Touchpad for 3900 chair (25 ft. cable)	1700-081-CS	
Chrome accents	9000-998-CS	
Twin wheel carpet floor casters	0010-401-CS	
Utility shelf assembly, 12" x 12"	1110-655	
Less standard utility center housing and cover	1115-020-CS	
Additional umbilical (per foot)	1115-999-CS	
Routing valve kit w/water shutoff & regulator/factory installed	1115-315-CS	
Water shut-off valve & regulator kit	1115-297-INT	

total:

Mobile Carts



Model 5910INT



Model 5915INT

Standard Features

DOCTOR CART 5910INT

Automatic control for three handpieces
asepsis 3-way air/water syringe w/tubing, 4'
handpiece tubings factory installed at 4'
individual pinch valve control blocks
master on/off
individual handpiece pressure adjustment
individual water coolant adjustment
non-retraction water coolant
air coolant adjustment
handpiece flush
self-contained clean water system, single bottle 1.5 liter
quick disconnect for water bottle
wet/dry foot control

Adjustable height frame, 26" to 35"

Twin wheel hard floor casters

External umbilical, 12' with 1/4" male QD for air supply

Air pressure regulator with filter inside the head

DOCTOR CART 5915INT

Same as unit above, with additional features

Central vacuum canister w/ disposable solids collector
autoclavable standard HVE lever valve w/ tubing, 5'
autoclavable saliva ejector lever valve w/ tubing, 5'

POWDER COAT SURFACE TREATMENTS (N/C)

Powder coat paint finishes: ☐ White ☐ Forest Grey

Plastic finishes: ☐ White ☐ Forest Grey ☐ Greywood (carbon fiber) ☐ Laser Leather (carbon fiber) ☐ Lemans (carbon fiber)

DESIGNER FRIENDLY™ SURFACE TREATMENTS

Powder coat paint finishes: ☐ Arctic Silver ☐ Bronze ☐ Charcoal ☐ Pearl ☐ Pewter
(10% upcharge) ☐ Sage ☐ Shadow



customize your forest delivery:

- Step 1: Select surface treatment options
 Step 2: Select handpiece positions
 Step 3: Select optional upgrades
 Step 4: Select optional upgrades



model selected:

Mobile Cart:

- ☐ 5910INT
☐ 5915INT



select handpiece positions:

handpiece positions	description	#1	#2	#3	#4	#5	part #	total
SYRINGE	silicone sheath, gray	✓					INCLUDED	
4-HOLE (vinyl)	vinyl tubing, gray						0017-010-GRY	
■ 6-PIN (vinyl)	vinyl tubing, gray						0017-603-GRY	
4-HOLE (silicone)	silicone tubing, gray						0017-693-INT	
■ 6-PIN- (silicone)	silicone tubing, gray						0017-614-INT	
● SCALER	Satelec SP Newton Piezo scaler						SAT-S-INT	
● LED SCALER	Satelec LED Piezo scaler						SAT-S-LED-INT	
● ELECTRIC MICRO-MOTOR	BIEN-AIR MCX with Rheostat control						BIEN-MCX-INT	
● ELECTRIC MICRO-MOTOR (with touchpad)	BIEN-AIR MX2 with Touchpad & Endo control						BIEN-MX2-INT	
● HEATED SYRINGE	conversion kit (I) syringe (vinyl)						1107-450-INT	
▲ ADDITIONAL HP, WET	REQUIRED for a WET 4th HP position						1100-189-INT	
▲ ADDITIONAL HP, DRY	REQUIRED for a DRY 4th HP position						1100-190-INT	
Intra-Oral Camera	Factory installed Airtech Polaris camera						AIRTECH-P	
NO TUBING	leave the block open						OPEN	
PLUG BLOCK	plug & close the block						PLUG	

■ REQUIRES HP illumination circuit board & EITHER 250 watt power supply or 48 watt power supply (board can accommodate (2) HP positions)

● 250 watt power supply source required when ordering chair mounted light or two or more ancillary devices

▲ When a fourth HP position is ordered, an ADDITIONAL DRY or WET HP position must be ordered



optional upgrades:

Description	Part #	Total
Upgrade Kit: wet/dry foot control with chip air	1105-109-INT-CS	
Foot controlsupport shelf, clamps to 2" base	0023-665	
Twin wheel carpet floor caster	0010-401-CS	
Utility shelf assembly, 12" x 12"	1110-655	
HP illumination circuit board with time delay and adjustable voltage, accommodates 2 HP positions*		
*Requires power supply	0014-357	
Power supplies (page 79)		
25 watt power supply	0014-394	
35 watt power supply (heated syringe)	0014-124	
48 watt power supply (motors, scalers)	0014-390	
250 watt universal power supply*		
*Required when ordering two or more ancillary devices or when ordering chair mounted light	0014-387	
Touchpad for 3900 chair (25ft. Cable)	1700-081-I-CS	
Additional standard autoclavable HVE,		
with 5' tubing, autoclavable oral dry cup (5915)	1400-113-CS	
Standard utility center housing and cover	1115-020	
Chrome accents (see page)	9000-998-CS	
Additional umbilical (per foot)	1115-999-CS	
Routing valve kit w/water shutoff & regulator/factory installed	1115-315-CS	

total:

Hospital Mobile Carts



Optional Muffler for Air Venturi
Model 3400-005-INT



Model 5210INT



Model 5410INT

Standard Features

DOCTOR CART 5210INT

Automatic control for three handpieces
asepsis 3-way air/water syringe w/tubing, 4'
handpiece tubings factory installed at 4'
pneumatic master control block w/diaphragm
master on/off
individual handpiece pressure adjustment
individual water coolant adjustment
non-retraction water coolant
air coolant adjustment
handpiece flush
handpiece exhaust filter/oil collector
self-contained clean water system, single bottle 1.5 liter
quick disconnect for water bottle
wet/dry foot control
Adjustable height frame, 26" to 35"
Twin wheel hard floor casters
External 7' umbilical
Standard utility center with housing and cover
air pressure regulator with filter
master air shut-off valve

DUO CART 5410

Same as 5210INT, with additional features:
Self-contained air-operated vacuum package with collection jar
autoclavable standard HVE lever valve w/ tubing, 5'
autoclavable saliva ejector lever valve w/ tubing, 5'

POWDER COAT SURFACE TREATMENTS (N/C)

Powder coat paint finishes: ☐ White ☐ Forest Grey

Plastic finishes: ☐ White ☐ Forest Grey ☐ Greywood (carbon fiber) ☐ Laser Leather (carbon fiber) ☐ Lemans (carbon fiber)

DESIGNER FRIENDLY™ SURFACE TREATMENTS

Powder coat paint finishes: ☐ Arctic Silver ☐ Bronze ☐ Charcoal ☐ Pearl ☐ Pewter
(10% upcharge) ☐ Sage ☐ Shadow



customize your forest delivery:

- Step 1: Select mobile cart
 Step 2: Select surface treatment options
 Step 3: Select handpiece positions
 Step 4: Select optional upgrades



model selected:

Mobile Cart:

- ☐ 5210INT
☐ 5410INT



select handpiece positions:

handpiece positions	description	#1	#2	#3	#4	#5	part #	total
SYRINGE	silicone sheath, gray	✓					INCLUDED	_____
4-HOLE (vinyl)	vinyl tubing, gray						0017-010-GRY	_____
■ 6-PIN (vinyl)	vinyl tubing, gray						0017-603-GRY	_____
4-HOLE (silicone)	silicone tubing, gray						0017-693-INT	_____
■ 6-PIN- (silicone)	silicone tubing, gray						0017-614-INT	_____
● SCALER	Satelec SP Newtron Piezo scaler						SAT-S-INT	_____
● LED SCALER	Satelec LED Piezo scaler						SAT-S-LED-INT	_____
● ELECTRIC MICRO-MOTOR	BIEN-AIR MCX with Rheostat control						BIEN-MCX-INT	_____
● ELECTRIC MICRO-MOTOR (with touchpad)	BIEN-AIR MX2 with Touchpad & Endo control						BIEN-MX2-INT	_____
● HEATED SYRINGE	conversion kit (I) syringe (vinyl)						1107-450-INT	_____
▲ ADDITIONAL HP, WET	REQUIRED for a WET 4th HP position						1100-189-INT	_____
▲ ADDITIONAL HP, DRY	REQUIRED for a DRY 4th HP position						1100-190-INT	_____
Intra-Oral Camera	Factory installed Airtech Polaris camera						AIRTECH-P	_____
NO TUBING	leave the block open						OPEN	_____
PLUG BLOCK	plug & close the block						PLUG	_____

- REQUIRES HP illumination circuit board & EITHER 250 watt power supply or 48 watt power supply (board can accommodate (2) HP positions)
 ● 250 watt power supply source required when ordering chair mounted light or two or more ancillary devices
 ▲ When a fourth HP position is ordered, an ADDITIONAL DRY or WET HP position must be ordered



optional upgrades:

Description	Part #	Total
Upgrade Kit: wet/dry foot control with chip air	1105-109-INT-CS	_____
Quick disconnect w/flow control, 1/4" (for water)	0016-454-CS	_____
Quick disconnect w/flow control, 3/8" (for air)	0016-456-CS	_____
Foot control support shelf, clamps to 2" base	0023-665	_____
Twin wheel carpet floor canisters	0010-401-CS	_____
Utility shelf assembly, 12" x 12"	1110-655	_____
HP illumination circuit board with time delay and adjustable voltage, accommodates 2 HP positions*		_____
*Requires power supply	0014-357	_____
Power supplies (page 79)		_____
25 watt power supply	0014-394	_____
35 watt power supply (heated syringe)	0014-124	_____
48 watt power supply (motors, scalers)	0014-390	_____
250 watt universal power supply*		_____
*Required when ordering two or more ancillary devices or when ordering chair mounted light	0014-387	_____
Muffler for air venturi (5410INT)	3400-005	_____
Additional air supply umbilical (per foot)	0017-860	_____
Standard utility center housing and cover	1115-020	_____
Additional umbilical (per foot)	1115-999-CS	_____
Routing valve kit w/water shutoff & regulator/factory installed	1115-315-CS	_____

total:

Optional Delivery Systems

compact controls



Model MT600-INT

Model MT610-INT

Standard Features

DOCTOR CONTROL 3 HANDPIECES

Top Shelf Mount	MT600TS-INT
Beneath Shelf Mount with Swivel	MT600BS-INT

DOCTOR CONTROL 2 HANDPIECES

Top Shelf Mount	MT610TS-INT
Beneath Shelf Mount with Swivel	MT610BS-INT

Shipping weight:
MT600: 20 lb / 10 kg
MT610: 20 lb / 10 kg

All units include the following features:

- asepsis 3-way air/water syringe w/tubing, 4'
- handpiece tubings factory installed at 4'
- pneumatic master control block w/diaphragm
- master on/off with individual handpiece pressure adjustment
- non-retraction water coolant
- air coolant adjustment
- self-contained clean water system, single bottle 1.5 liter
- quick disconnect for water bottle
- wet/dry foot control

External 12' umbilical

Standard utility center without housing & cover

- air pressure regulator with filter
- master air shut-off valve



POWDER COAT SURFACE TREATMENTS (N/C)

Powder coat paint finishes:

☐ White

☐ Forest Grey



customize your forest delivery:

- Step 1: Select compact control
 Step 2: Select surface treatment options
 Step 3: Select handpiece positions
 Step 4: Select optional upgrades



model selected:

Top Shelf:

- ☐ MT600TS-INT
☐ MT610TS-INT

Bottom Shelf:

- ☐ MT600BS-INT
☐ MT610BS-INT



select handpiece positions:

handpiece positions	description	#1	#2	#3	#4	#5	part #	total
SYRINGE	silicone sheath, gray	✓					INCLUDED	
4-HOLE (vinyl)	vinyl tubing, gray						0017-010-GRY	
■ 6-PIN (vinyl)	vinyl tubing, gray						0017-603-GRY	
4-HOLE (silicone)	silicone tubing, gray						0017-693-INT	
■ 6-PIN (silicone)	silicone tubing, gray						0017-614-INT	
HEATED SYRINGE	conversion kit (1) syringe (vinyl)						1107-450-INT	
NO TUBING	leave the block open						PLUG	
PLUG BLOCK	plug & close the block						EMPTY	

■ REQUIRES HP illumination circuit board & power supply (board can accommodate (2) HP positions)



optional upgrades:

Description	Part #	Total
Upgrade Kit: wet/dry foot control with chip air	1105-109-INT-CS	
Slide mount with swivel, 7 5/8" extension (order BS)	1700-140	
Folding arm assembly, 8" x 12" with wall mount (order TS)	1110-115-CS	
HP illumination circuit board with time delay and adjustable voltage, accommodates 2 HP positions*		
*Requires power supply	0014-357	
Power supplies (page 79)		
25 watt power supply	0014-394	
35 watt power supply (heated syringe)	0014-124	
Standard utility center housing & cover	1115-020	
Additional umbilical (per foot)	0017-819-CS	
Less self-contained clean water system	1700-355-INT-CS	
Water shut-off valve & regulator kit	1115-297-INT	
Quick disconnect	dealer installed, page 89	
Routing valve kit	dealer installed, page 89	
total:		

Optional Delivery Systems

panel mounts



Model 2500INT



Model 2510INT

Standard Features

2500INT

Automatic control for three handpieces
asepsis 3-way air/water syringe w/tubing, 7'
handpiece tubings factory installed at 7'
pneumatic master control block w/diaphragm
master on/off
individual handpiece pressure adjustment
individual water coolant adjustment
non-retraction water coolant
air coolant adjustment
self-contained clean water system, single bottle 1.5 liter
quick disconnect for water bottle
wet/dry foot control
Remote mount holder assembly with control tubing, 6'
External 6' umbilical
Standard utility center without housing & cover
air pressure regulator with filter
master air shut-off valve

2510INT

Manual control for two handpieces
1 wet and 1 dry handpiece position
asepsis 3-way air/water syringe w/tubing, 7'
handpiece tubings factory installed at 4'
individual module control block with manual selector,
individual handpiece pressure adjustment
non-retraction water coolant
self-contained clean water system, single bottle 1.5 liter
quick disconnect for water bottle
wet/dry foot control
Remote mount holder assembly with control tubing, 6'
External 6' umbilical
Standard utility center without housing & cover
air pressure regulator with filter
master air shut-off valve

Shipping weight:
2500: 18 lb / 8 kg
2510: 15 lb / 7 kg

POWDER COAT SURFACE TREATMENTS (N/C)

Powder coat paint finishes: ☐ White ☐ Forest Grey

customize your forest delivery:

- Step 1: Select panel mount
Step 2: Select surface treatment options
Step 3: Select handpiece positions
Step 4: Select optional upgrades

model selected:

Panel Mount:

- ☐ 2500INT
☐ 2510INT

select handpiece positions:

handpiece positions	description	#1	#2	#3	#4	#5	part #	total
SYRINGE	silicone sheath, gray	✓					INCLUDED	
4-HOLE (vinyl)	vinyl tubing, gray						0017-810-GRY	
6-PIN (vinyl)	vinyl tubing, gray						0017-603-GRY	
4-HOLE (silicone)	silicone tubing, gray						0017-693-INT	
6-PIN (silicone)	silicone tubing, gray						0017-614-INT	
HEATED SYRINGE	conversion kit (1) syringe (vinyl)						1107-450-INT	
NO TUBING	leave the block open						PLUG	
PLUG BLOCK	plug & close the block						EMPTY	
ADDITIONAL HP (wet)	for 2500 model only						1100-189-INT	
ADDITIONAL HP (dry)	for 2500 model only						1100-190-INT	

REQUIRES HP illumination circuit board & power supply (board can accommodate (2) HP positions)

optional upgrades:

Description	Part #	Total
Upgrade Kit: wet/dry foot control with chip air	1105-109-INT-CS	
HP illumination circuit board with time delay and adjustable voltage, accommodates 2 HP positions*		
*Requires power supply	0014-357	
25 watt power supply	0014-394	
35 watt power supply (heated syringe)	0014-124	
Additional umbilical (per foot)	0017-819-CS	
Add standard utility center, housing & cover	1115-020	
Additional umbilical (per foot)	0017-819-CS	
Routing valve kit w/water shutoff & regulator/factory installed	1115-315-CS	
Water shut-off valve & regulator kit	1115-297-INT	
Quick disconnect	dealer installed, page 89	
Routing valve kit	dealer installed, page 89	

total:

Optional Delivery Systems



Model PMT300



Model PMT350

Standard Features

DOCTOR CONTROL PMT300

Automatic control from two handpieces
 asepsis 3-way air/water syringe w/ tubing, 5'
 handpiece tubings factory installed at 5'
 pneumatic master control block w/ diaphragm
 master on/off
 individual handpiece pressure adjustment
 non-retraction water coolant w/ on/off
 air coolant adjustment
 self contained clean water system, single bottle 16 oz.
 wet/dry foot control
 1/4" female air outlet QD
 1/4" male air QD w/ tubing, 6'
 Air pressure regulator w/ filter and gauge
 Master air and water shut-off valves

DUO CONTROL PMT350

Same as PMT300, with additional features

Self-contained AVS Venturi vacuum with collection jar
 autoclavable standard HVE lever valve w/ tubing, 5'
 autoclavable saliva ejector lever valve w/ tubing, 5'

Shipping weight:
 PMT300: 20 lb / 10 kg
 PMT350: 25 lb / 12 kg



POWDER COAT SURFACE TREATMENTS (N/C)

Powder coat paint finishes: ☐ White ☐ Forest Grey



select handpiece positions:

handpiece positions	description	#1	#2	#3	#4	#5	part #	price
SYRINGE	silicone sheath, gray	✓					INCLUDED	
4-HOLE (vinyl)	vinyl tubing, gray						0017-010-GRY	
6-PIN (vinyl)	vinyl tubing, gray						0017-603-GRY	
4-HOLE (silicone)	silicone tubing, gray						0017-693-INT	
6-PIN (silicone)	silicone tubing, gray						0017-614-INT	
NO TUBING	leave the block open						PLUG	
PLUG BLOCK	plug & close the block						EMPTY	

REQUIRES HP illumination circuit board & power supply (board can accommodate (2) HP positions)

Assistant's Instrumentation + Cuspidors

fixed chair post mount, external



MODEL 1636INT



1637INT

Description

Part

Total

CUSPIDOR, BASIC 1636INT

Gravity drain cuspidor with swing away arm
timed bowl rinse
manual cup fill
removable ceramic bowl
Post mount adapter, 2"
External umbilical, 5'
(Does not include post or chair adapter)

CUSPIDOR, BASIC 1637INT

Same as 1636 above, with additional features:

Individual assistant's instrumentation holders
Central vacuum accessory package
central vacuum canister w/disposable solids collector
asepsis 3-way air/water syringe w/tubing, 5'
autoclavable standard HVE lever valve w/tubing, 5'
autoclavable saliva ejector lever valve w/tubing, 5'
(Does not include post or chair adapter)

* All optional utility centers include: housing and cover, air & water pressure regulator with filter master air and water shut-off valve, unless otherwise stated.

Cuspidor, basic..... model choice: _____
Vacuum drain cuspidor..... 1400-115
Basic cuspidor automatic cup fill..... 1700-055-CS
Self-contained clean water system, w/quick disconnect
single bottle, 1½ liter..... 1700-310-CS
Additional autoclavable standard HVE
w/tubing, 5' & autoclavable oral dry cup (1637)..... 1400-113-CS
Quick disconnect with flow control, ¼"
(specify air or water)..... 0016-455-CS
Standard utility center housing & cover..... 1115-020
Standard utility center *..... 1115-001
Additional umbilical (per foot)..... 1115-999-CS

Mounting posts 2" diameter:
Control post with cap, 18"..... 1110-487

Light posts: 44", 2" diameter
Forest model..... 1110-794

Assistant's instrumentation..... 1075
Additional standard autoclavable HVE
w/ tubing, 5' & autoclavable oral dry cup..... 1400-113-CS
Self-contained clean water system, w/quick disconnect
single bottle, 1½ liter..... 1700-323-CS
Assistant's air shut-off & regulator utility center,
w/o housing & cover..... 1115-008
Standard utility center housing & cover..... 1115-020
Additional umbilical (per foot)..... 1115-998-CS

total:

Shipping weight:
1636 17 lb / 8 kg
1637 20 lb / 9 kg
1075 15 lb / 7 kg

CHAIR ADAPTERS

FOREST, 3900 FIXED

accommodates external umbilical	1115-195
accommodates internal umbilical	1115-531

FOREST, 3900 FIXED FOR SIDEBOX

accommodates internal umbilical	1115-530
---------------------------------------	----------

FOREST, 3900 PIVOT

accommodates internal umbilical	1115-528
---------------------------------------	----------

MONITOR POSTS 2" diameter with oilite bushing (used with 1300)

30" w/dual slot, fixed sidebox mount	1331-998
30" w/single slot, fixed (includes post clamp)	1331-997

24" LIGHT POST EXTENSION (INCLUDES POST CLAMP)

forest model	1110-518
pelton & crane	1110-517

35" LIGHT POST (INCLUDES POST CLAMP)

forest model	1110-820
pelton & crane	1110-822

35" LIGHT POST W/SLOT (FOR MONITOR CORD) (INCLUDES POST CLAMP)

forest model	1110-045
--------------------	----------

44" LIGHT POST

forest model	1110-794
pelton & crane	1110-785

44" LIGHT POST W/SLOT (FOR MONITOR CORD)

forest model	1110-050
--------------------	----------

44" LIGHT POST W/SLOT (SIDEBOX OPTION)

forest model	1110-900
pelton & crane	1110-890

44" LIGHT POST W/DUAL SLOT (FOR MONITOR CORD & SIDEBOX ACCESS)

forest model	1110-170
--------------------	----------

Factory Options + Parts

part #



48 WATT POWER SUPPLY

Factory option 0014-381

- Required when using scalers and micromotors
- Size: 5 1/2" - 3 1/2" - 1": Easily fits in all Forest floor boxes
- Quick disconnect connector for Forest scaler and electric motor



HEATED SYRINGE CONVERSION KIT FACTORY OPTION 1107-450-CS

The heated syringe conversion kit adapts to existing 3-way syringes to provide instant warm water during normal operations. Includes:

- Power source with variable temperature and on/off controls (1/2 Amp fuse, Volts 10 1/2 - 12 w/ load applied)
- Size, 2 3/4" x 5" x 2 1/2"
- Tubing
- Low voltage wire, 10'



110 WATT POWER SUPPLY

Factory option 0014-389

- Size: 6" - 4" - 2 1/2": Easily fits in all Forest floor boxes
- Quick disconnect connectors for Forest operator lights
- Available in both 230 volt and 110 volt



250 WATT (UNIVERSAL POWER SUPPLY)

Factory option 0014-387

- Required when using two or more ancillary devices, or when using a Forest Operator light and any Forest ancillary product (excluding the 3900 soft-touch massager power source)
- Provides power for MULTIPLE electrical accessories such as: fiber-optics, heated syringe tubing, operator lights, scalers, curing lights, and electric micro motors
- Size: 7 1/2" - 5 1/2" - 2 1/2": Easily fits in all Forest floor boxes
- Quick disconnect connectors for all of Forest ancillary products
- Built in air-electric switch, enables power source to turn on/off with pilot air
- Available in both 230 volt and 110 volt



BIEN-AIR OPTIMA INT ELECTRIC HANDPIECE CONTROL W/ENDO

Factory option BIEN-MX2-INT

Please call 800-433-2436 for warranty and technical support of the Handpiece.

- Handpiece purchased separately from Bien-air
- Highest torque output on the market
- Swivel tubing reduces arm fatigue
- Quick-disconnect, autoclavable motor
- High and low speed applications using one attachment
- MX motor speed from 100 to 40,000 rpm
- Auto-reverse and torque control for endo procedures
- 40 memory position with pre-programmed procedures
- Bien-Air warranty 3 years from date of purchase

Factory Options + Parts

part #

BIEN-AIR OPTIMA INT ELECTRIC HANDPIECE CONTROL

Factory option BIEN-MCX-INT

Please call 800-433-2436 for warranty and technical support of the Handpiece.



- Handpiece purchased separately from Bien-air
- Highest torque output on the market
- Swivel tubing reduces arm fatigue
- Quick-disconnect, autoclavable motor
- High and low speed applications using one attachment
- MX motor speed from 100 to 40,000 rpm
- Bien-Air warranty 3 years from date of purchase

ANCILLARY SHELF

Factory option 0010-310



- Accommodates additional ancillary products
- Designed for easy access to installed devices
- Powder coated aluminum
- Installed on all control heads except Euro and MT compact controls

AIR TECHNIQUES POLARIS & SPECTRA CAMERAS

Factory option AIRTECH-P / AIRTECH-S

Please call 800-247-8324 for warranty and technical support of Camera.



- New Direct USB connection fits in standard chair side delivery unit
- TWAIN interface for easy "Play & Play" software integrations
- Hot swappable USB umbilical between Polaris & Spectra
- New convenient On/Off rubber button
- Revolutionary 120 degree rubber handgrip button ring allows for capture of all angles with ease and comfort
- Top button capture on BUTTON RELEASE
- Sapphire crystal lens (no scratching)
- USB cable, 25' with signal booster
- Air Techniques warranty 3 years from date of purchase

POLARIS (AIRTECH-P)

- Fixed focal distance: 6 to 40 mm
- No manual focusing required

SPECTRA (AIRTECH-S)

- Uses fluorescence to detect caries within fissures & on smooth surfaces that often go undetected by traditional means
- Detects decay around the margins of existing composite and amalgam restorations
- Can be used during the restorative phase to verify that all caries have been removed
- Promotes minimally invasive treatment techniques
- Displays a tangible color/numerical value to show the extent of decay present, providing means of tracking progression and regression of treatment plans over time

Factory Options + Parts

part #



SATELEC SP NEWTRON PIEZO SCALER, w/power supply
Factory option SAT-S-INT

SATELEC SP NEWTRON LED LIT PIEZO SCALER, w/power supply
Factory option SAT-S-LED-INT

Please call 800-289-6367 for warranty and technical support of the Scaler.

- Color coding system ensures proper tip and power setting
- Three tips: #1, #10Z, H3 (Intro Scaling Kit)
- Tips available for periodontics, endodontics, scaling, restorative, and cavity preparation
- Cruise Control™ automatically adjusts frequency amplitude
- On/off controlled by rheostat
- First ever autoclavable LED lit handpiece – 100,000 LUX
- Newtron technology means power, control and reliability!
- Satelec warranty 1 year / tips 30 days from date of purchase



USB CABLE, 16'
Factory installed in delivery head 0014-286

USB BOOSTER CONNECTOR CABLE, 16'
Factory option 0014-355



PEDO BOOSTER SEAT to accommodate smaller patients
specify upholstery color..... 3907-180

- A cushion that takes the lumbar out of the chair, essentially turning it into a bed, ideal for children.



IV BOARD 3900-200

- Adjustable angle to accommodate any size patient
- Double articulating scissor arm for industry leading range of placement

Factory Options + Parts

part #



3900 REMOTE MOUNT TOUCHPAD WITH 25' CABLE

FIXED HORIZONTAL MOUNT

Carrera White	1700-079
Forest Grey	1700-079-G
Designer Friendly™	1700-079-C



SWING HORIZONTAL MOUNT

Under surface or cabinet

Carrera White	1700-089-HM
Forest Grey	1700-089-HM-G
Designer Friendly™	1700-089-HM-C



SWING VERTICAL MOUNT

Wall Mount

Carrera White	1700-089
Forest Grey	1700-089-VM-G
Designer Friendly™	1700-089-VM-C



HANDPIECE TUBING, ASEPSIS STYLE (4-HOLE, MIDWEST TUBING)

Gray (vinyl) tubing	0017-810-GRY
Gray (silicone) tubing	0017-693-INT
• 4-Hole, straight with midwest terminal	



HANDPIECE ILLUMINATION TUBING, 6 PIN

6-Pin (vinyl) tubing, gray	0017-603-GRY
6-Pin (silicone) tubing, gray	0017-614-INT
• ISO standard power optic handpiece terminal with stainless steel adapter and nut (ISO-L, 6-pin)	
• Asepsis style handpiece tubing, 7' (4' to 5' factory installed)	



HP ILLUMINATION BOARD WITH TIME DELAY & VARIABLE VOLTAGE

Light Board	0014-357
-------------------	----------

Light board is equipped with a time delay (0-20 seconds) and variable voltages (2-4.5 VDC) for each handpiece position. The light board is powered by a 12-24 VAC transformer (not included).



HP ILLUMINATION BOARD WITH TIME DELAY & VARIABLE VOLTAGE + SILICONE 6-PIN TUBING

Light Board + Silicone 6-pin tubing, gray	1700-175-INT
---	--------------

Light board is equipped with a time delay (0-20 seconds) and variable voltages (2-4.5 VDC) for each handpiece position. The light board is powered by a 12-24 VAC transformer (not included).

Factory Options + Parts

part #



WATER BOTTLE QUICK DISCONNECT UPGRADE KIT
Clean water QD kit (includes bottle) 1100-423

This kit allows an existing Forest clean water system to be easily converted to a quick-disconnect water system. Comes standard with loctite, noise-reduction barbs and water pick-up tubing.



DURR amalgam separator for fixed chair with sidebox. Cover and mounting bracket included.
Factory option 1400-270-CS
Separator not included. Mounting rack set up for Durr CSI/ CASI separator.



1107-785-INT

1107-595-INT

AIR/WATER SYRINGE
Standard syringe assembly 1107-086
with gray sheathed silicone tubing assembly, 5' 1107-785-INT
Standard syringe assembly 1107-097
with gray sheathed silicone tubing assembly, 4' 1107-595-INT



SYRINGE TUBING ASSEMBLY (POLYURETHANE), SHEATHED
Gray (silicone) 0017-850-INT



HEATED SILICONE SYRINGE TUBING ASSEMBLY, ASEPSIS STYLE
Gray 0017-450-INT

Factory Options + Parts

part #



DELUXE STANDARD HVE VACUUM VALVE 1100-342
Autoclavable with metal lever



DELUXE UNIVERSAL VACUUM VALVE 1100-343
Autoclavable with metal lever



DELUXE SALIVA EJECTOR VALVE
Autoclavable with metal lever
with grey tip 1100-341
with black tip 1100-341-BLK



Durr universal HVE valve
Factory option 1100-505



Durr saliva ejector (SE) valve
Factory option 1100-510



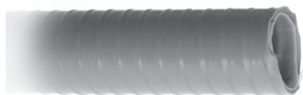
Durr connectors
Red o-ring, 20 x 2, pack of 25 0015-335
Blue connector clip, pack of 25 0016-160
25 mm male tubing connector 0016-468
17 mm female tubing connector 0016-467
Ball Joint for large suction hose 0016-469



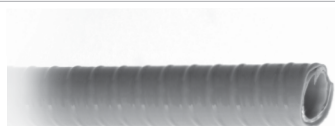
Durr SE/ HVE package kit with DURR tubing and vacuum cannister connectors
Factory option 1100-525

Factory Options + Parts

part #



Durr HVE vacuum tubing (18 mm)
Factory option 0017-840



Durr SE vacuum tubing (10 mm)
Factory option 0017-841



Durr vacuum hanger

For assemblies: 10911INT, 10921INT, 12811INT, 21811INT
Factory option 0024-205
Black 0024-205-BLK

For assemblies: 36861INT/ 34861INT
Factory option 0024-180
Black 0024-180-BLK

For assembly: 15781INT
Factory option 0024-191
Black 0024-191-BLK

For assembly: 15911INT
Factory option 0024-215
Black 0024-215-BLK

For assembly: 14951INT
Factory option 0024-181
Black 0024-181-BLK



Durr electric switch
Factory option 0010-634



SMOOTH VACUUM TUBING, 1/2" ID FACTORY OPTION

Factory option 0017-933-CS
Gray 0017-908
Sterling 0017-933
Black 0017-333



SMOOTH VACUUM TUBING, 1/2" HEX ID

Gray 0017-794
Sterling 0017-932
Black 0017-332

Factory Options + Parts

part #



SALIVA EJECTOR TUBING (VINYL)

Gray	0017-794
Sterling	0017-930
Black	0017-530



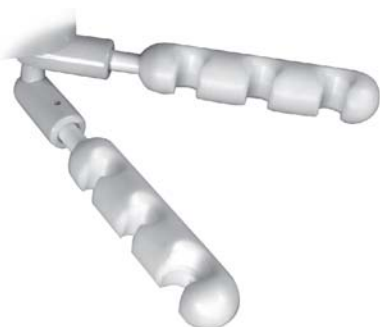
QUAD HOLDER ASSEMBLY, UNIVERSAL

White	0024-114
Black	0024-114-BLK



QUAD HOLDER ASSEMBLY, DOUBLE HVE

White	0024-127
Black	0024-127-BLK



DUAL ARTICULATING QUAD HOLDER ASSEMBLY

4 standard, 4 universal, white	0024-227
4 standard, 4 universal, black	0024-227-BLK
8 universal, white	0024-224
8 universal, black	0024-224-BLK



WET/DRY FOOT CONTROL, with chip blower air

White	1105-106-INT
Designer Friendly (specify color)	1105-106-INT-C
Upgrade kit from a regular chip blower	1105-109-INT-CS



WET/DRY FOOT CONTROL

White	1105-105-INT
Designer Friendly (specify color)	1105-105-INT-C



CONTOURED UTILITY CENTER HOUSING AND COVER (8 X 17 3/16 X 17 3/16)

White	3900-101
Forest grey	3900-101-G
Shadow	3900-101-SH
Designer friendly	3900-101-C

COMPLETE CONTOURED UTILITY CENTER

• air and water pressure regulator with filter	
• master air and water shut-off valves	
White	3900-102
Forest grey	3900-102-G
Shadow	3900-102-SH
Designer friendly	3900-102-C



STANDARD UTILITY CENTER HOUSING AND COVER (4 1/2 X 9 X 14)

White	1115-020
Forest Grey	1115-020-G
Designer Friendly (specify color)	1115-020-C

COMPLETE STANDARD UTILITY CENTER

- air and water pressure regulator with filter
- master air and water shut-off valves

White	1115-001
Factory option	1115-001-CS
Forest grey	1115-001-G
Designer Friendly (specify color)	1115-001-C



TRAY HOLDER ASSEMBLY, use with 1095 rear pivot assistant's instrumentation

Factory option	1110-680
Forest Gray	1110-680-G
Designer Friendly (specify color)	1110-680-C

includes:

- pivoting powder coated tray holder, 9 3/4" x 13 1/2"
- clamp assembly adapts to 1 1/2" horizontal or vertical post



SWIVEL TRAY HOLDER ASSEMBLY (use with all chair mounted deliveries)

Small swivel tray (specify over the patient or traditional)	1110-468-CS
Large swivel tray (specify over the patient or traditional)	1110-475-CS

Dimensions:

- Small tray: 213mm x 318mm
- Large tray: 289mm x 375mm



SLIDE WITH SWIVEL 7 5/8" EXTENSION, use with under surface mount units 2400, 2700 & MT's

Factory option	1700-140
Forest Gray	1700-140-G
280	

Designer Friendly (specify color)	1700-140-C
---	------------

SLIDE WITH SWIVEL 7 5/8" EXTENSION, use with under surface mount units 1280, 2180

Factory option	1700-141
----------------------	----------

includes:

- 4" x 4" horizontal mounting plate with smooth slide glides
- 7 5/8" slide plate
- swivel control bracket



FOLDING ARM ASSEMBLY 8 X 12, use with under surface mount units 2400, 2745 & MT's, 2180, 1280, 1700-141

Factory option	1110-115-CS
Forest Gray	1110-115-G
Designer Friendly (specify color)	1110-115-C

Includes:

- 8" folding arm with 1/2" pin and umbilical retainer
- 12" folding arm with 1/2" pin and umbilical retainer
- 4" x 4" wall mounting plate which accepts 1/2" pin
- Control mount with 1/2" pin

Factory Options + Parts

part #



UNIVERSAL HEAVY DUTY MOUNTING PLATE

10" X 24" beneath counter

0010-084-BLK

11" X 14 1/2" beneath counter

0010-086-BLK



FLOATING WORK SURFACE ARM ASSEMBLY, 20"

Factory option 12811NT/21811NT 0023-806

with beneath counter and work surface support bracket

Forest Grey 0023-815-G

Designer Friendly (specify color)..... 0023-815-C



SUPPORT SHELF

Factory option 0023-665

Forest Gray 0023-665-G

Designer Friendly (specify color)..... 0023-665-C

Provides adequate support for use of foot control while allowing cart mobility.



VACUUM DRAIN CUSPIDOR KIT 1400-115

May be used to adapt all models of gravity drain cuspidor to central vacuum system. Includes:

- Vacuum drain valve
- Flush nipple
- Filter assembly
- Tubing
- Installation hardware



AIR AND WATER ACCESSORY PANEL

White 1300-030

Forest Gray 1300-030-G

Designer Friendly (specify color)..... 1300-030-C

- 3/8" female air quick disconnect
- Toggled shut off for air quick disconnect
- 1/4" female water quick disconnect
- Flow adjustment for water quick disconnect
- 4" x 3" flush mount panel



flow control

QUICK DISCONNECTS

1/4" QD with flow control, factory installed 0016-454-CS

1/4" QD with flow control, black / grey 0016-454-BLK / -G

1/4" QD with flow control, arm and delivery head mount, grey, factory installed 0016-455-CS

1/4" QD with flow control, arm and delivery head mount, black / grey 0016-455-BLK / -G

3/8" QD with flow control, grey, factory installed 0016-456-CS

3/8" QD with flow control, black / grey 0016-456-BLK / -G

Factory Options + Parts

part # price



water shut-off and regulator

ROUTING VALVE KITS — Check with local authorities about installation requirements

Factory installed with water shut-off and regulator 1115-315-CS

Factory installed without water shut-off and regulator 1115-316-CS

Dealer installed includes; toggle valve, bracket, tubing.

water shut-off and regulator, black / grey 1115-310-BLK / 1115-310

Dealer installed includes; toggle valve, bracket, and tubing

black / grey 1115-312-BLK / 1115-312



AIR OR WATER KIT with automatic shutoff valve with 3/8" compression and regulator

Factory Installed. 0020-050

- Adjustable air/water pressure regulator with filter
- Automatic air/water shutoff valve with 3/8" compression fitting and manual shutoff valve
- Chrome finished



MANUAL SHUTOFF

Factory Installed. 1100-080

- Outlet, 3/8" inside diameter compression fitting
- Inlet 1/2" ftp
- Chrome finished



HIGH DENSITY BOTTLE

1½ liter 0010-464

1 liter 0010-364

For use with clean water systems.

- Opaque bottle
- High Density Polyethylene (HDPE)



AUTOMATIC HANDPIECE CONTROL BLOCK DIAPHRAGM

Tri-block 0022-020

Quad-block 0022-024

N/C lifetime warranty. Serial number and purchase order required. Freight and labor paid by dealer.



FOREST ALLEN WRENCH KIT 0008-019

Includes one each of the following sizes:

.050, 1/16, 5/64, 3/32, 7/64, 1/8, 9/64, 5/32, 3/16, 7/32, 1/4, 5/16

Factory Options + Parts

part #



HOLDER for Automatic handpiece, 1/2" holder bar

Forest Grey/Sterling	0010-836-G
Shadow	0010-836-SH
Black	0010-836-BLK
White	0010-836-WH



HOLDER, NOTCHED for automatic handpiece, fixed holder bar

Forest Grey/Sterling	0010-835-G
Shadow	0010-835-SH
Black	0010-835-BLK
White	0010-835-WH



HOLDER for universal vacuum/syringe/saliva ejector

Forest Grey/Sterling	0010-886-G
Shadow	0010-886-SH
Black	0010-886-BLK
White	0010-886-WH



HOLDER, NOTCHED for universal vacuum/syringe/saliva ejector, fixed holder bar

Forest Grey/Sterling	0010-885-G
Shadow	0010-885-SH
Black	0010-885-BLK
White	0010-885-WH



HOLDER for automatic standard vacuum

Forest Grey/Sterling	0010-837-G
Shadow	0010-837-SH
Black	0010-837-BLK
White	0010-837-WH

HOLDER, NOTCHED for automatic standard vacuum, for fixed holder bar

Forest Grey/Sterling	0010-838-G
Shadow	0010-838-SH
Black	0010-838-BLK
White	0010-838-WH



HOLDER for automatic accessory/universal vacuum

Forest Grey/Sterling	0010-846-G
Shadow	0010-846-SH
Black	0010-846-BLK
White	0010-846-W

HOLDER, notched for automatic accessory/universal vacuum, for fixed holder bar

Forest Grey/Sterling	0010-847-G
Shadow	0010-847-SH
Black	0010-847-BLK
White	0010-847-WH



HOLDER ELECTRIC for automatic handpiece/universal vacuum/ saliva ejector, normally open	
Forest Grey/Sterling	0010-856-G
Shadow	0010-856-SH
Black	0010-856-BLK
White	0010-856-WH
HOLDER ELECTRIC for automatic handpiece/universal vacuum/ saliva ejector, normally closed	
Forest Grey/Sterling	0010-854-G
Shadow	0010-854-SH
Black	0010-854-BLK
White	0010-854-WH



HOLDER, NOTCHED ELECTRIC for automatic handpiece/universal vacuum/ saliva ejector, normally open	
Forest Grey/Sterling	0010-857-G
Shadow	0010-857-SH
Black	0010-857-BLK
White	0010-857-WH
HOLDER, NOTCHED ELECTRIC for automatic handpiece/universal vacuum/ saliva ejector, normally closed	
Forest Grey/Sterling	0010-855-G
Shadow	0010-855-SH
Black	0010-855-BLK
White	0010-855-WH



HOLDER, ELECTRIC for automatic standard vacuum, normally open	
Forest Grey/Sterling	0010-858-G
Shadow	0010-858-SH
Black	0010-858-BLK
White	0010-858
HOLDER, ELECTRIC for automatic standard vacuum, normally closed	
Forest Grey/Sterling	0010-868-G
Shadow	0010-868-SH
Black	0010-868-BLK
White	0010-868-WH



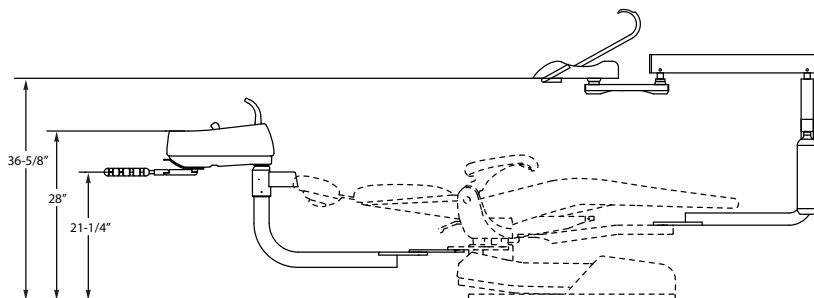
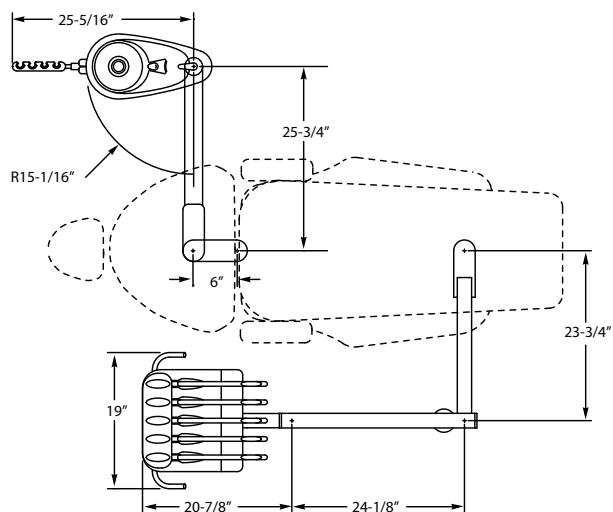
HOLDER, NOTCHED ELECTRIC for automatic standard vacuum, normally open for fixed holder bar	
Forest Grey/Sterling	0010-859-G
Shadow	0010-859-SH
Black	0010-859-BLK
White	0010-859-WH
HOLDER, NOTCHED ELECTRIC for automatic standard vacuum, normally closed for fixed holder bar	
Forest Grey/Sterling	0010-869-G
Shadow	0010-869-SH
Black	0010-869-BLK
White	0010-869-WH



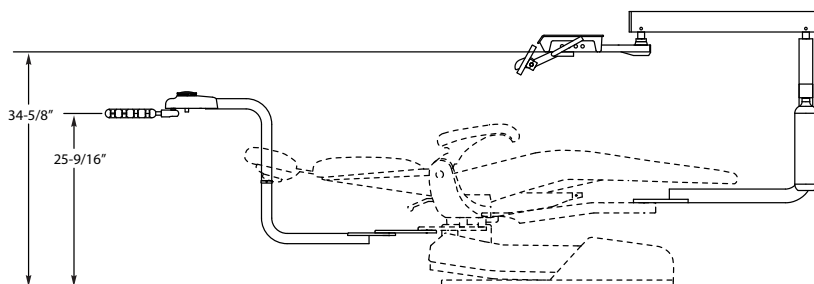
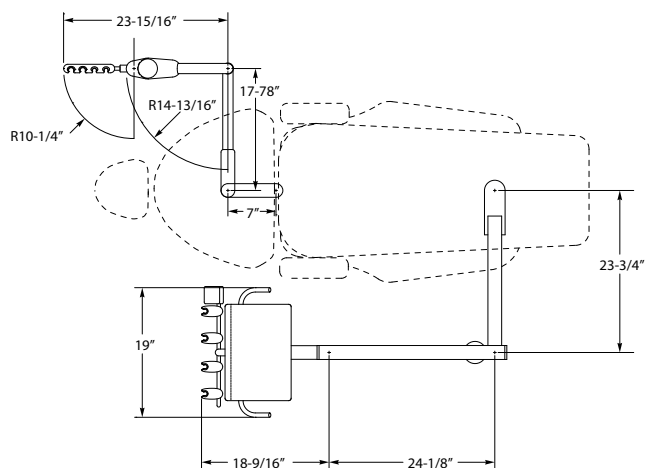
HOLDER, NOTCHED ELECTRIC for automatic accessory/ universal vacuum	
Forest Grey/Sterling	0010-846-G
Shadow	0010-846-SH
Black	0010-846-BLK
White	0010-846-WH
HOLDER, NOTCHED ELECTRIC for automatic accessory/ universal vacuum, for fixed holder	
Forest Grey/Sterling	0010-847-G
Shadow	0010-847-SH
Black	0010-847-BLK
White	0010-847-WH

General Information (Dimensions)

PIVOT DELIVERY SYSTEMS

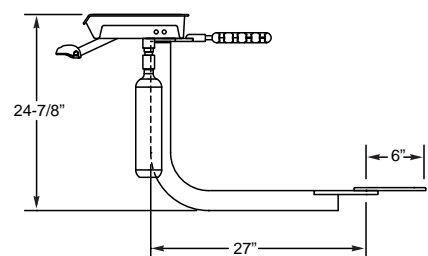
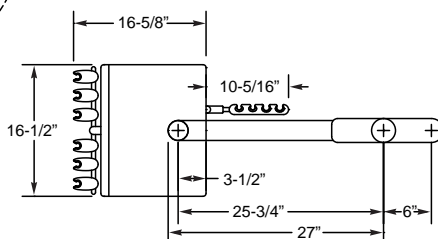
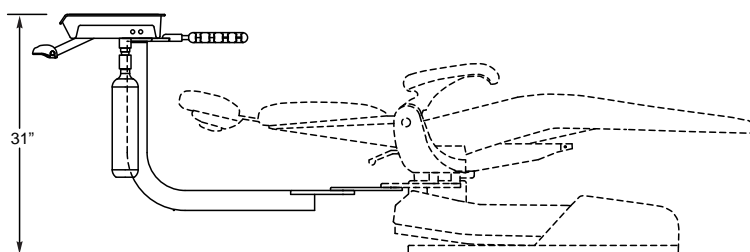
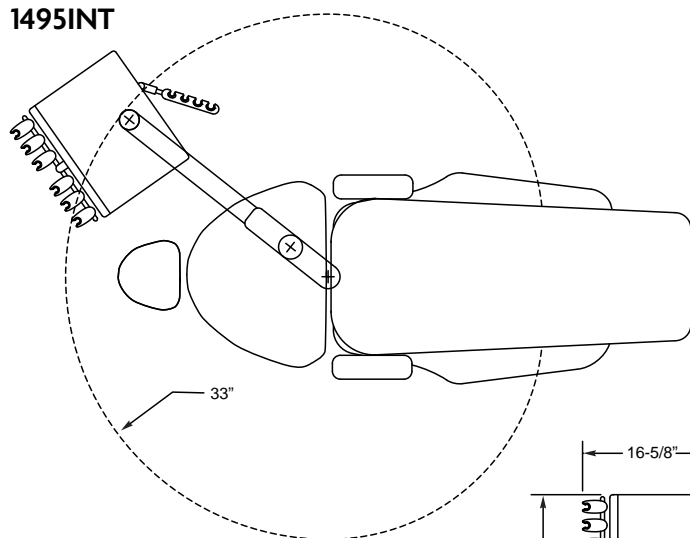


From tip of cuspidor assistant's holder to end of pivot light post is 120"



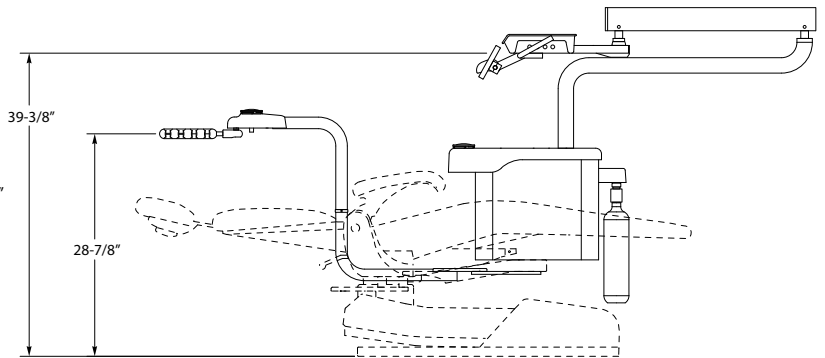
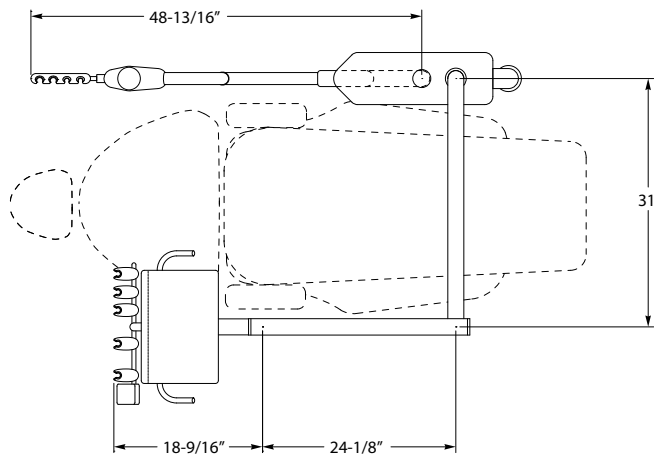
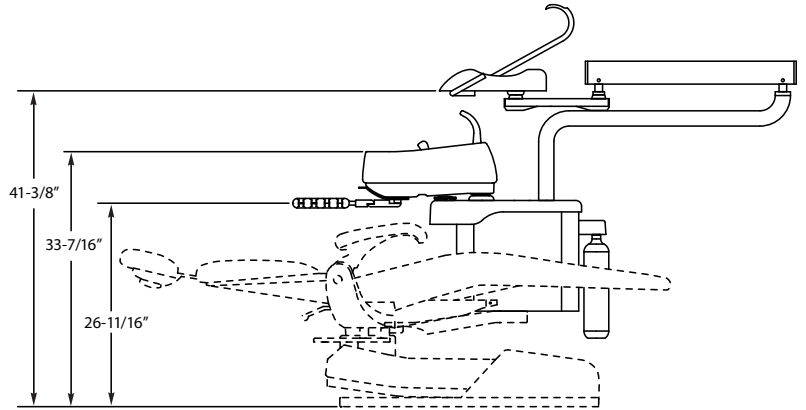
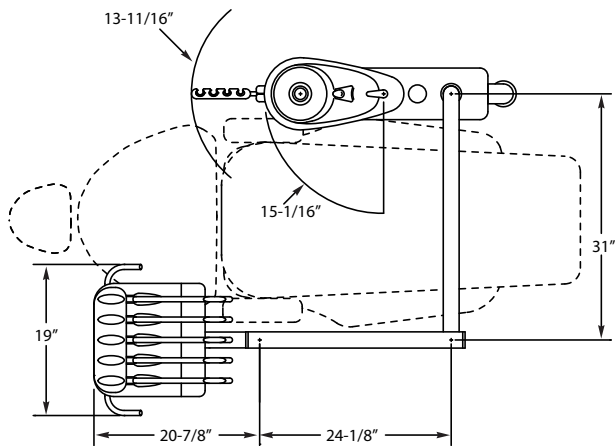
From tip of assistant's holder to end of pivot light post is 111"

1495INT

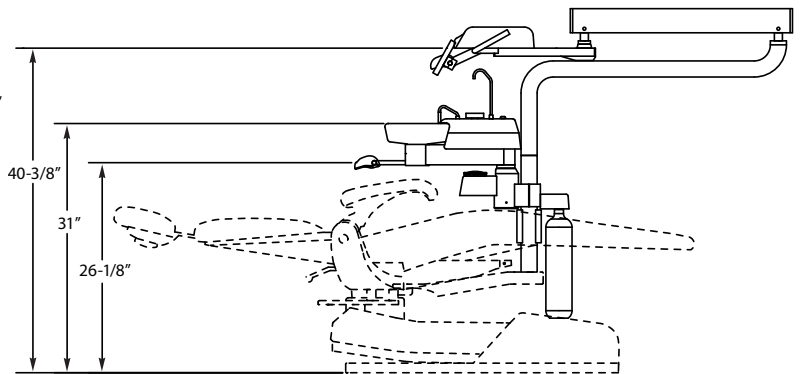
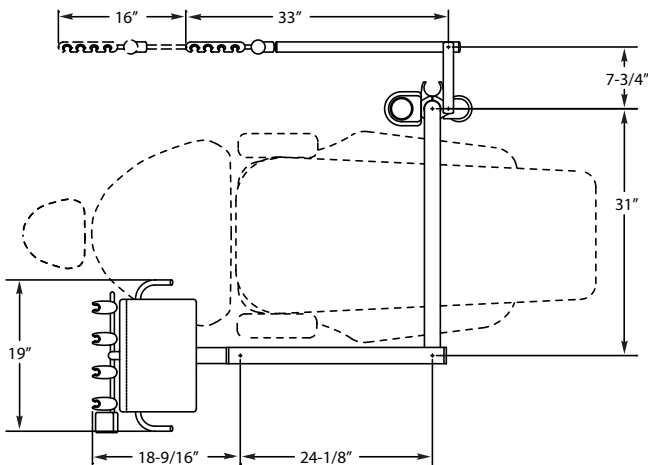


General Information (Dimensions)

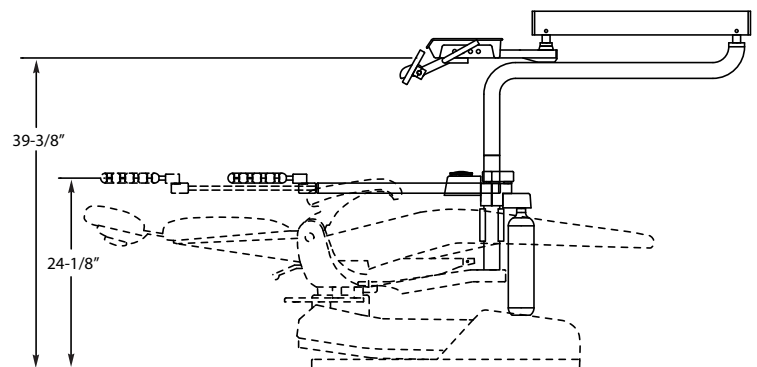
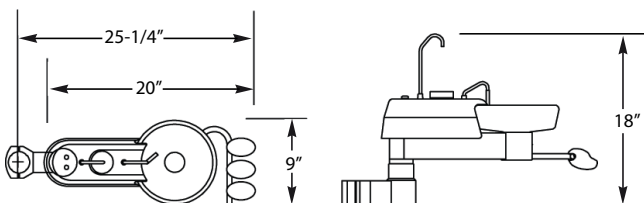
FIXED WITH SIDEBOX DELIVERY SYSTEMS



FIXED WITHOUT SIDEBOX DELIVERY SYSTEMS

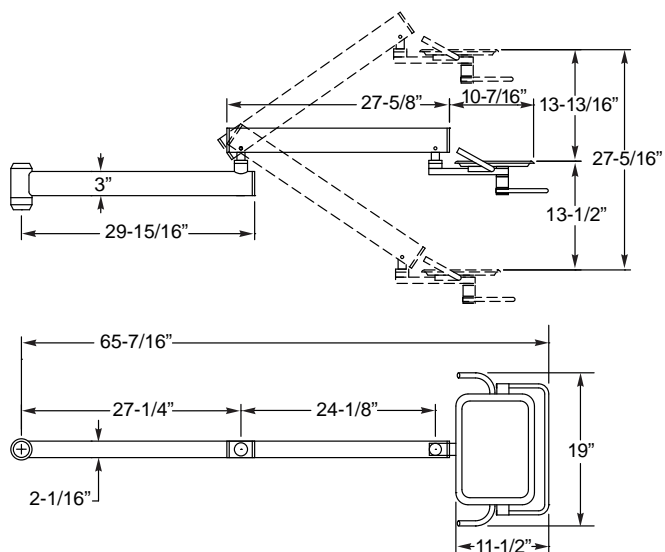


1636 / 1637 BASIC



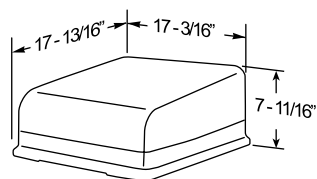
General Information (Dimensions)

1800INT FLEX TRAY ASSEMBLY

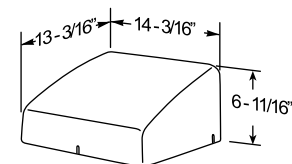


UTILITY CENTERS

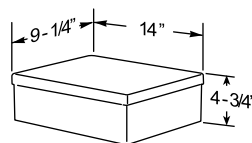
Contoured



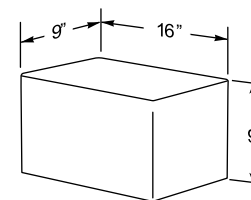
Deluxe



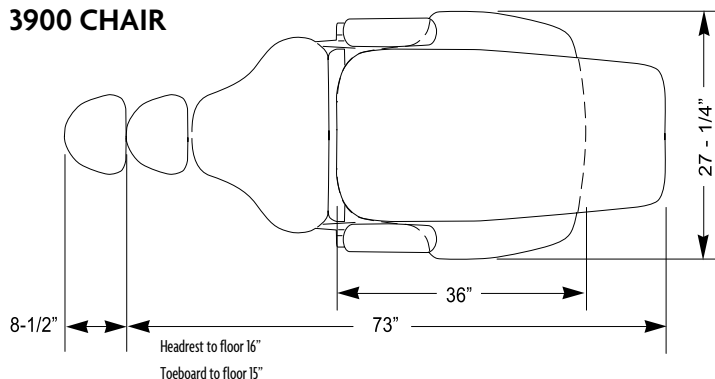
Standard



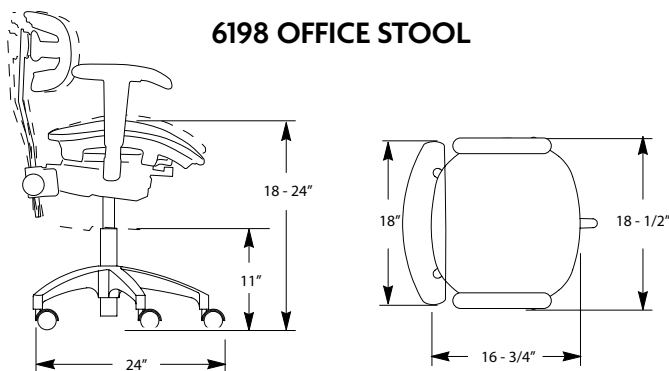
Recessed



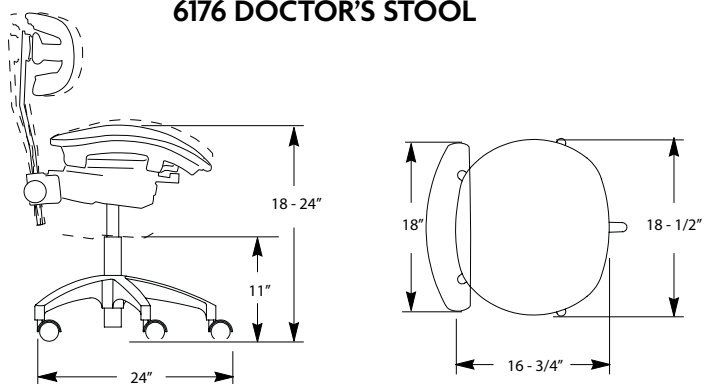
3900 CHAIR



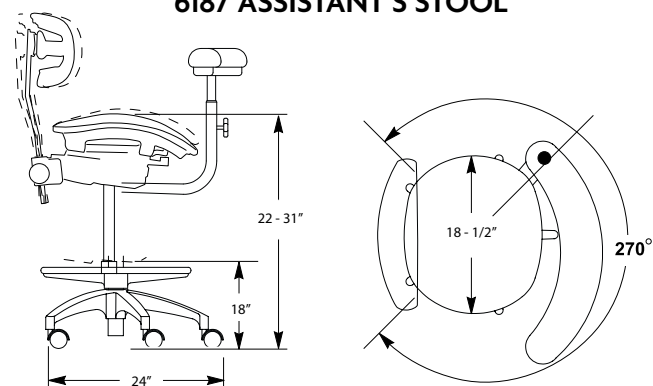
6198 OFFICE STOOL



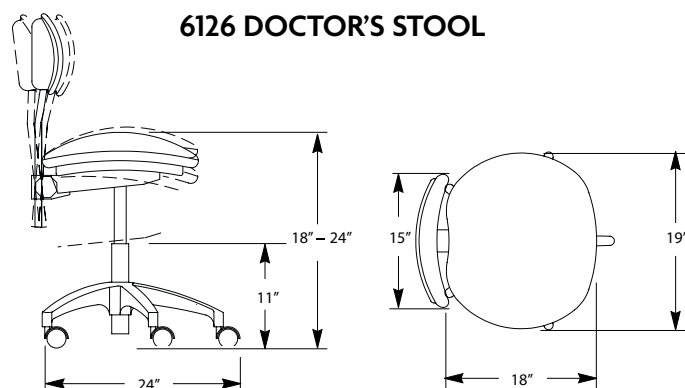
6176 DOCTOR'S STOOL



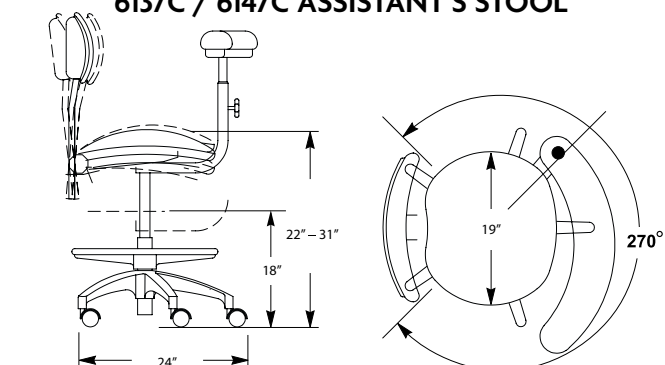
6187 ASSISTANT'S STOOL



6126 DOCTOR'S STOOL

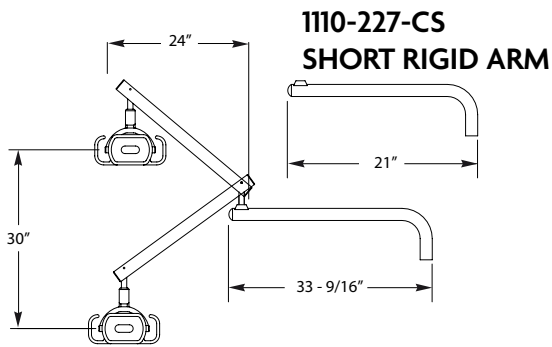


6137C / 6147C ASSISTANT'S STOOL

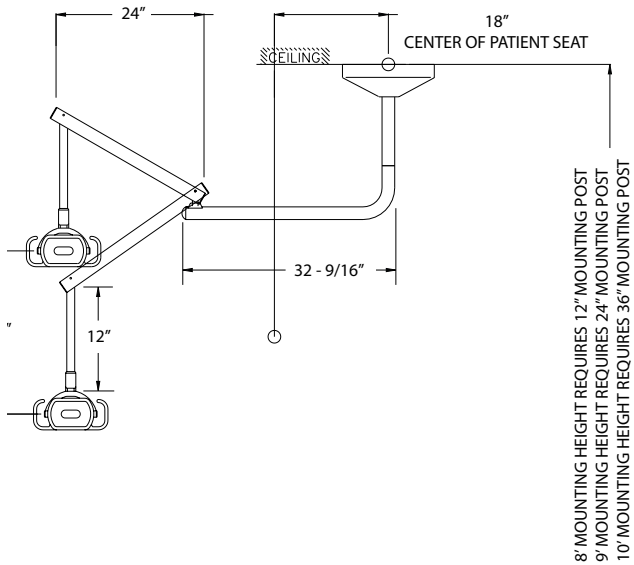


General Information (Dimensions)

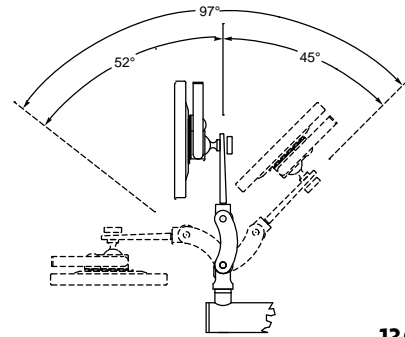
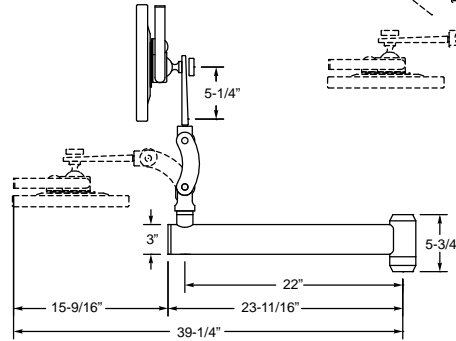
CHAIR MOUNT LIGHT



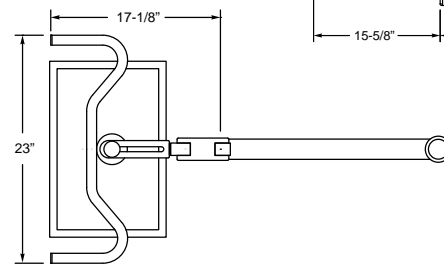
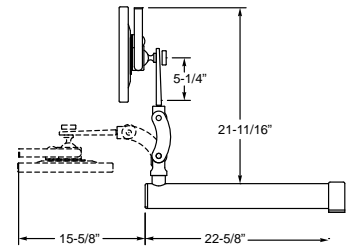
CEILING MOUNT LIGHT



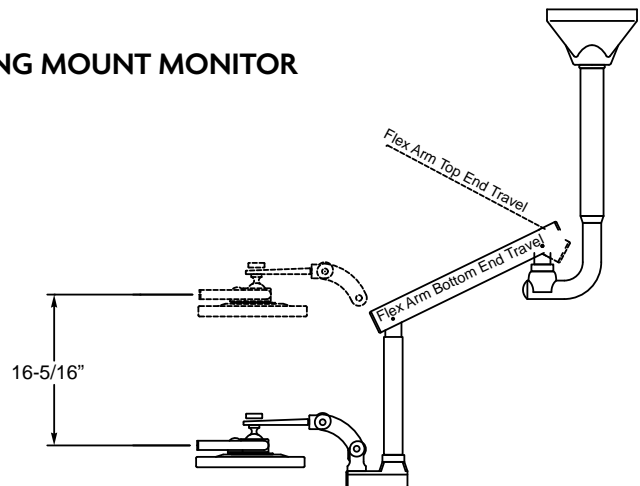
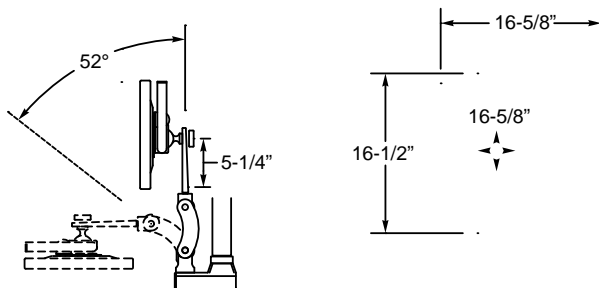
1300RM



1300TPM



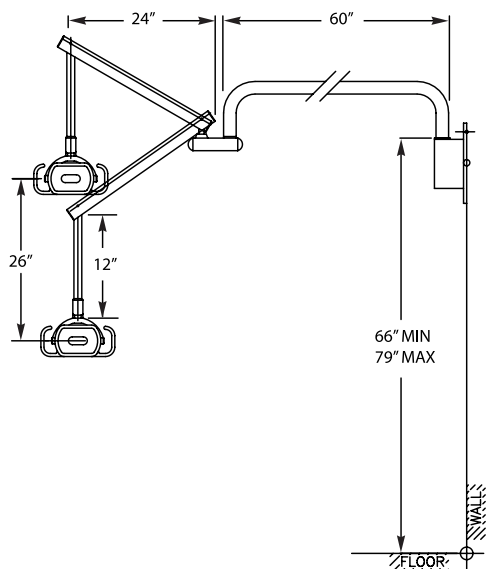
1300-C CEILING MOUNT MONITOR



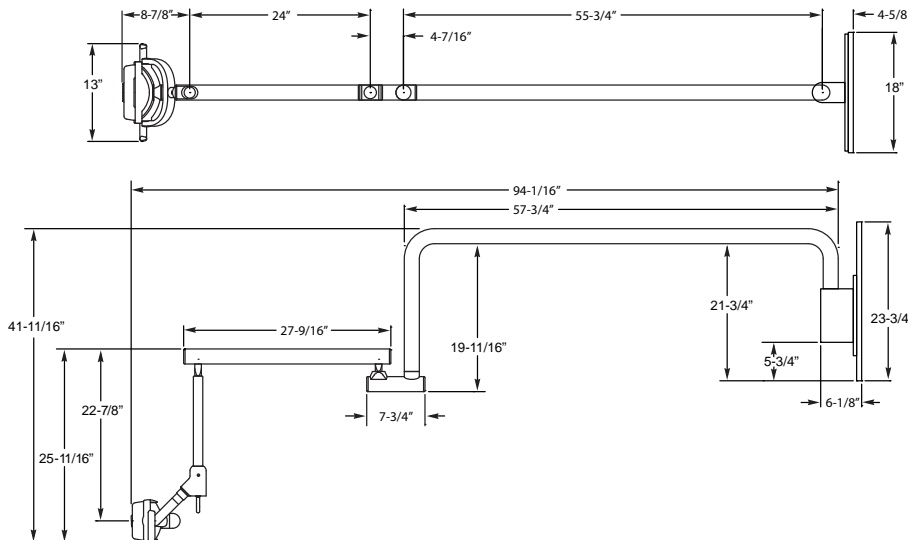
8" MOUNTING HEIGHT REQUIRES 12" MOUNTING POST
9" MOUNTING HEIGHT REQUIRES 24" MOUNTING POST
10" MOUNTING HEIGHT REQUIRES 36" MOUNTING POST

General Information (Dimensions)

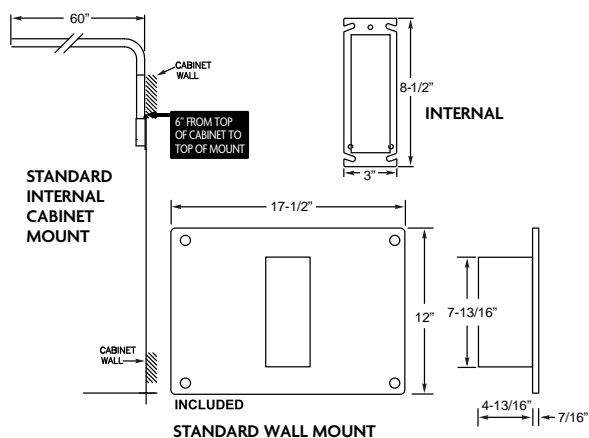
STANDARD WALL & CABINET MOUNT LIGHT



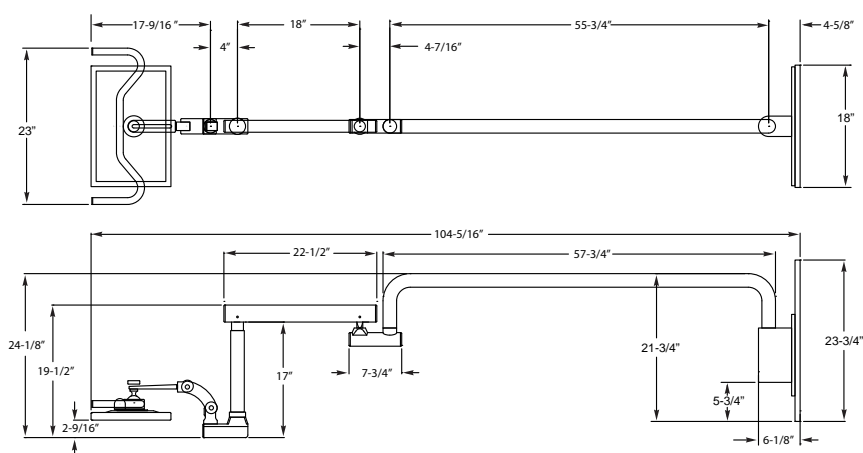
TALL WALL & CABINET MOUNT LIGHT



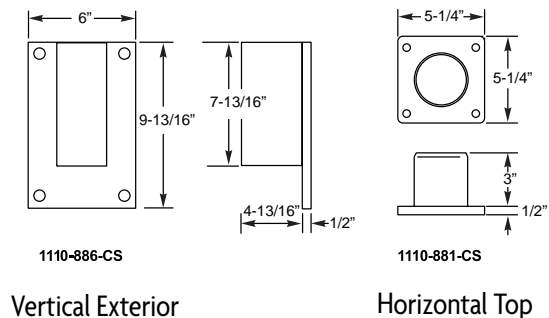
CABINET MOUNT



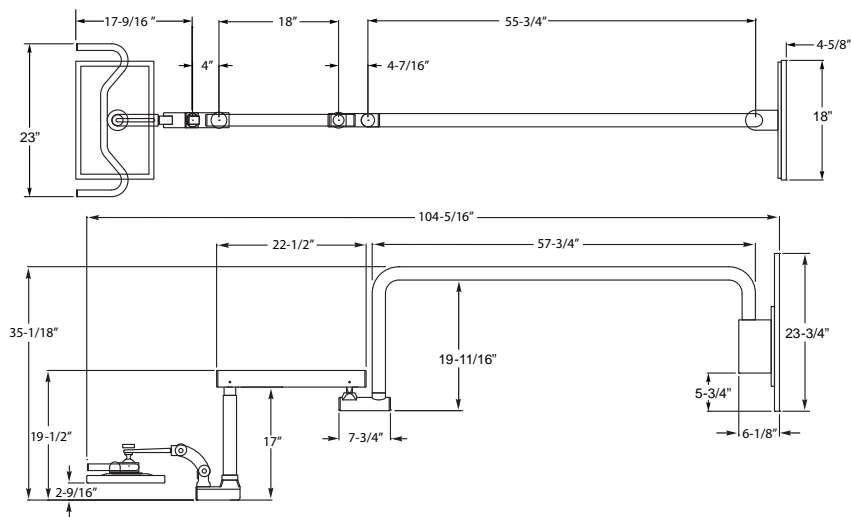
STANDARD WALL & CABINET MOUNT MONITOR



OPTIONAL CABINET MOUNT

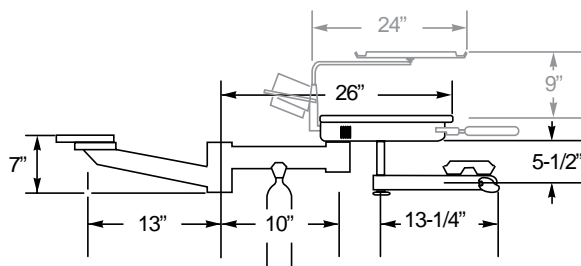
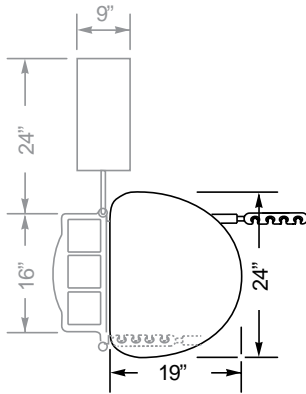


TALL WALL & CABINET MOUNT MONITOR



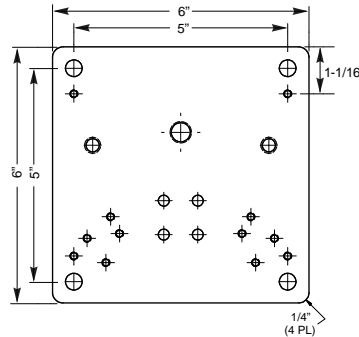
General Information (Dimensions)

7000BC BENEATH COUNTER

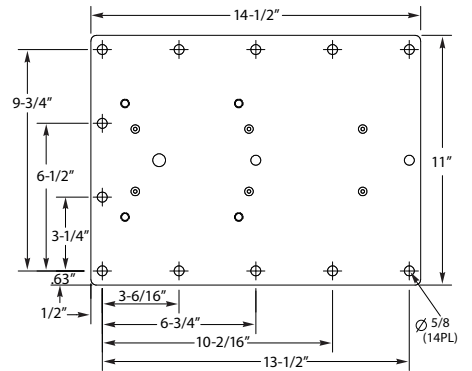


- * work surface 9/16" thick
- * shown with optional storage organizer, tray and additional assistant's holder bar
- * Height adjustable work surface, 5"

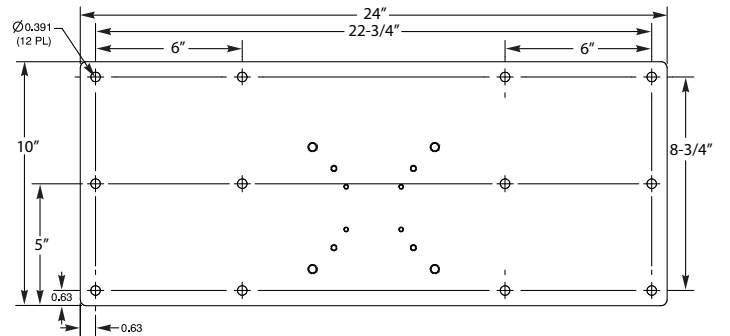
7000BC Mounting Plates



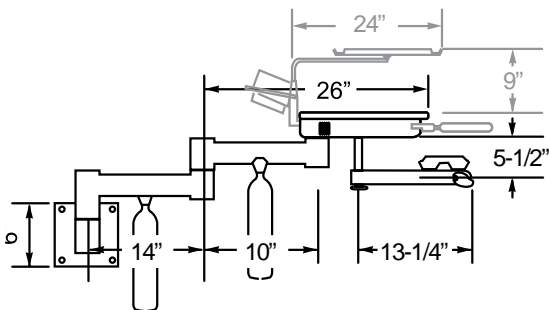
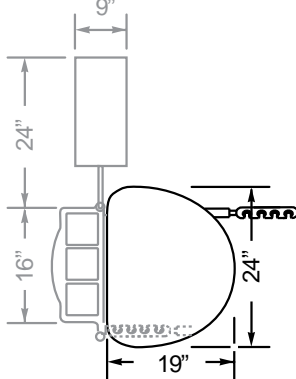
0010-086



0010-084-CS Option

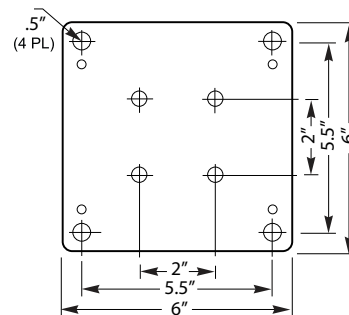


7000WM WALL MOUNT

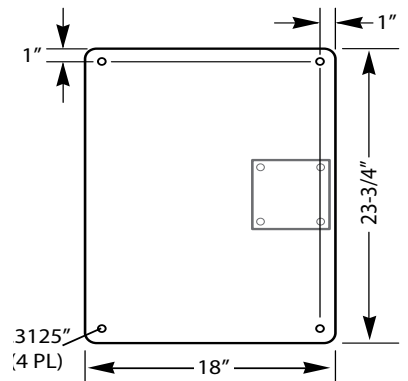


- * work surface 9/16" thick
- * shown with optional storage organizer, tray and additional assistant's holder bar
- * Height adjustable work surface, 5"

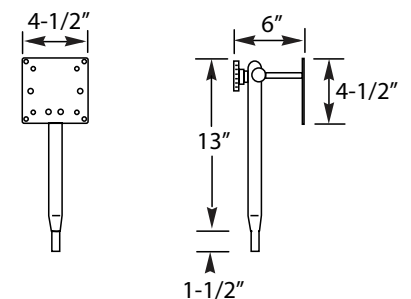
7000WM Mounting Plate



7000WM Leveling/Mounting Board

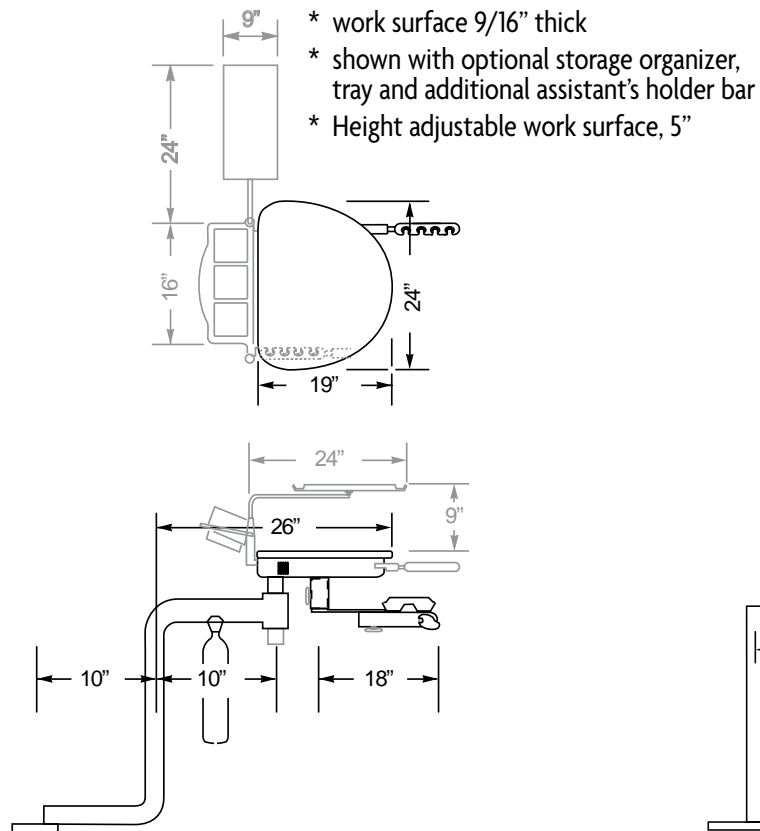


1300-025-CS Monitor Assembly Option

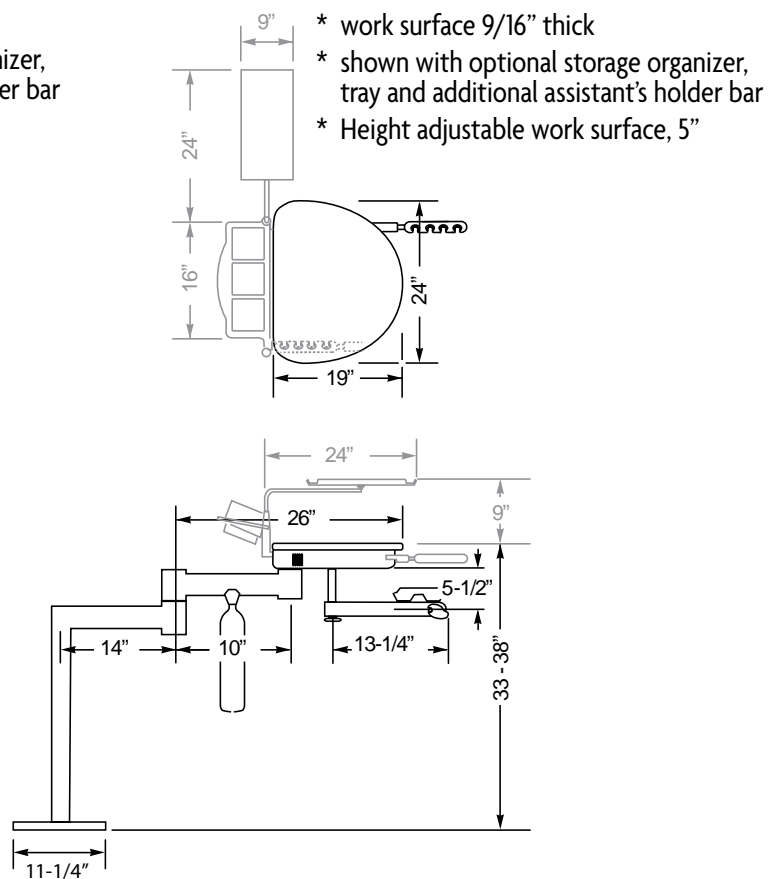


General Information (Dimensions)

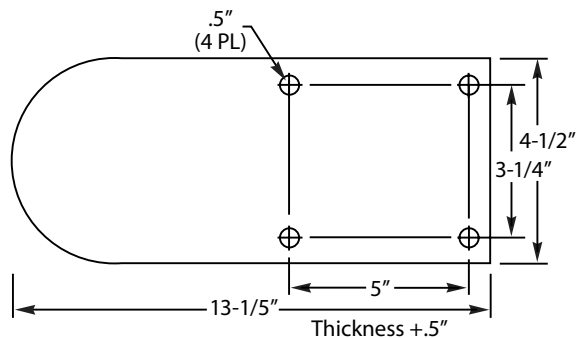
7000UC BENEATH CABINET MOUNT



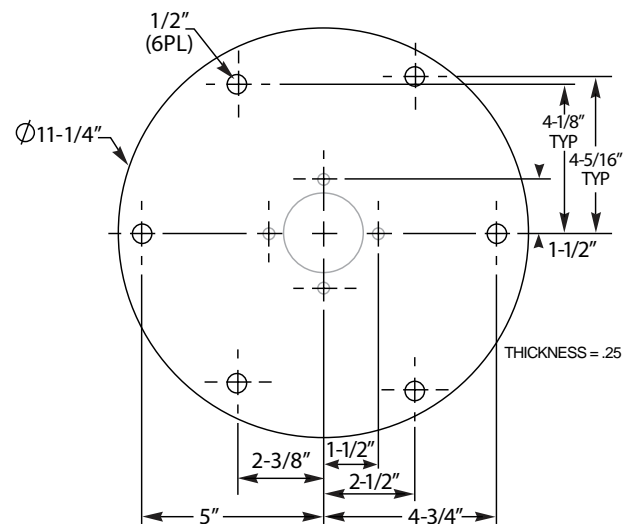
7000FM FLOOR MOUNT



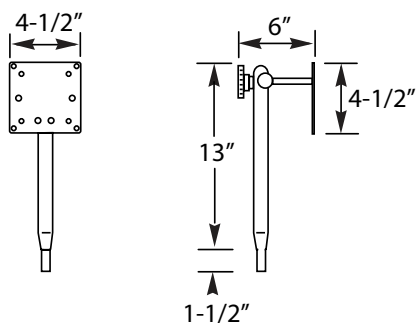
7000UC Under Cabinet Leveling/Mounting Plate



7000FM FLOOR MOUNT Leveling/Mounting Plate

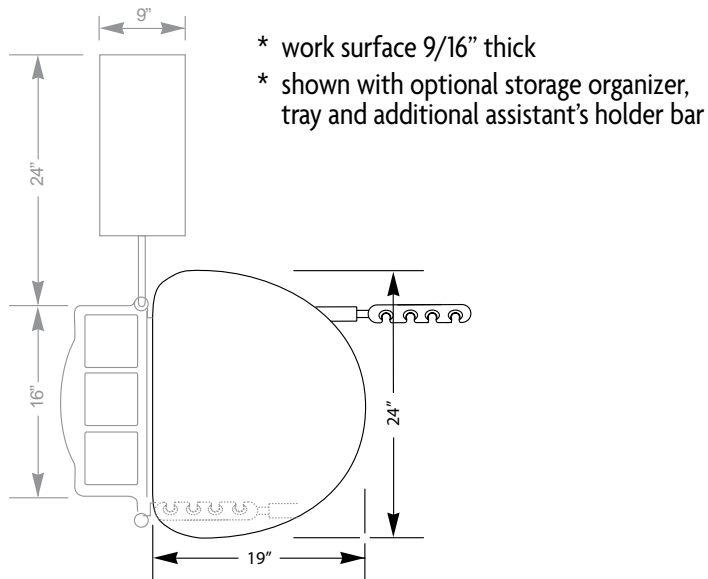


1300-025-CS Monitor Assembly Option

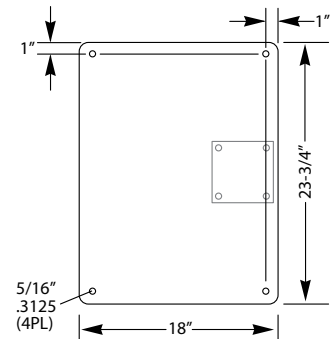


General Information (Dimensions)

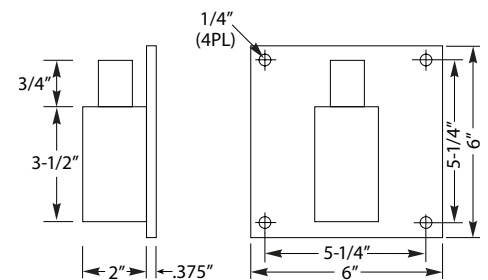
3486/3686 WALL OR CABINET MOUNT



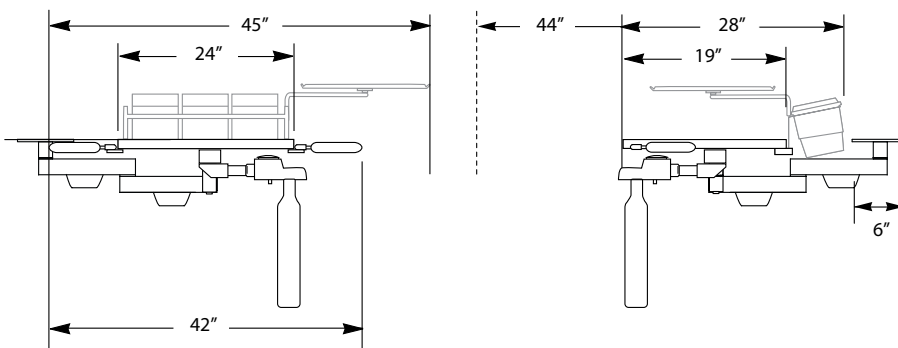
3386/3486/3686WM Leveling/ Mounting Board



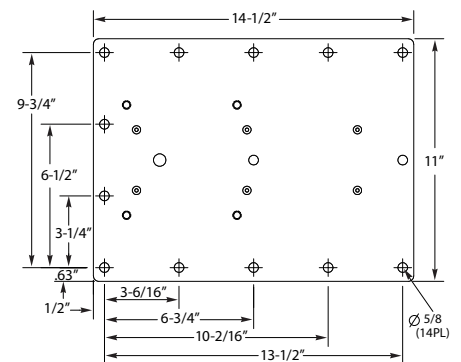
3386/3486/3686WM 3686BC/WM Rear Beneath Duo



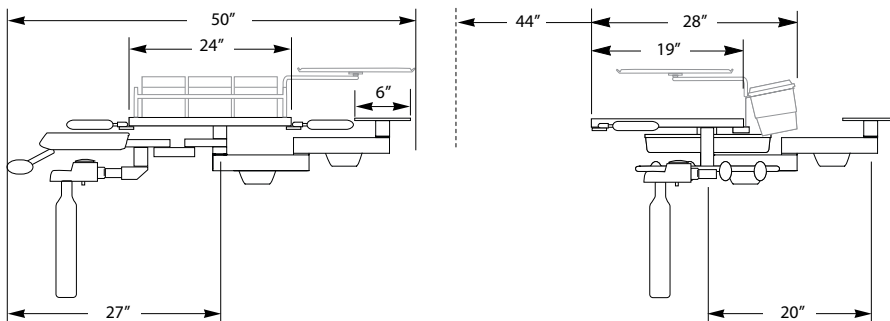
WALL MOUNT OR BENEATH COUNTER MOUNT



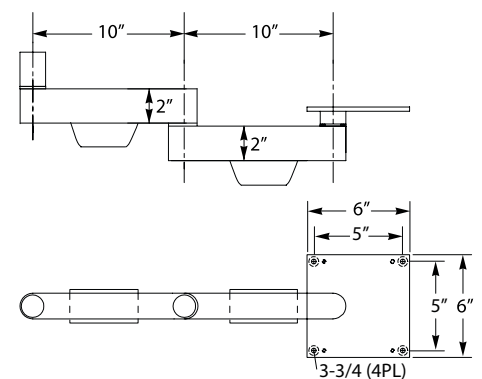
3386/3486/3686BC Heavy Duty Mounting Plate



WALL MOUNT OR BENEATH COUNTER MOUNT



3386/3486/3686BC Mounting Arm

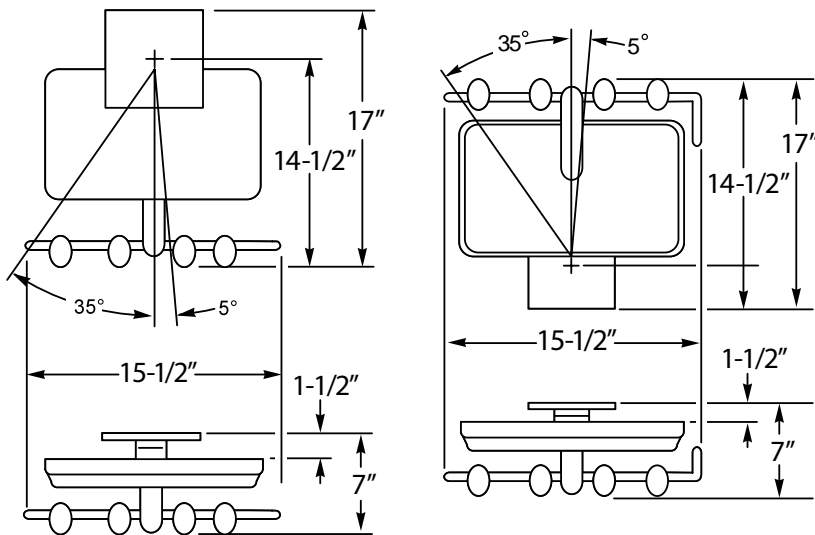


Work surface

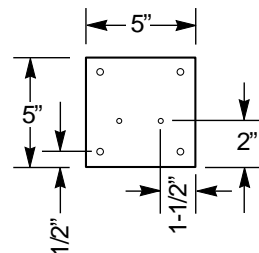
Counter

General Information (Dimensions)

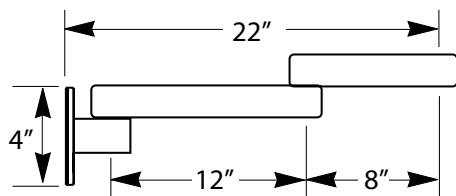
2400 / 2700 REAR MOUNT BENEATH COUNTER



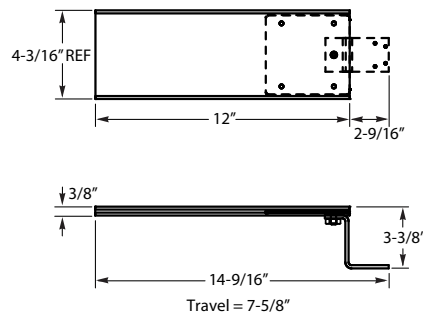
2400/2700 Leveling/Mounting Plate



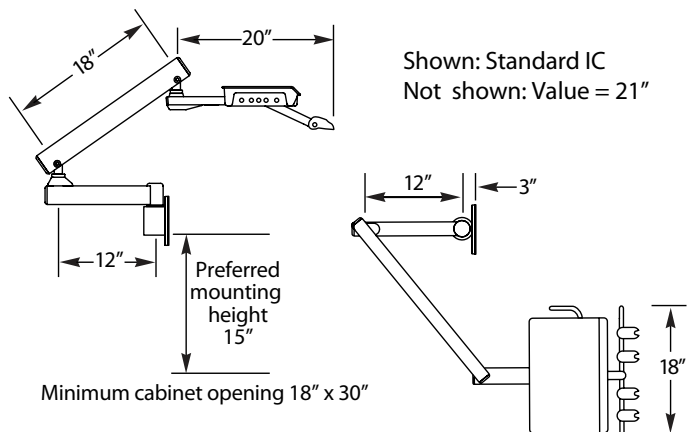
1110-115-CS Folding Arm System Option



1700-140 Slide Mount with Swivel Option

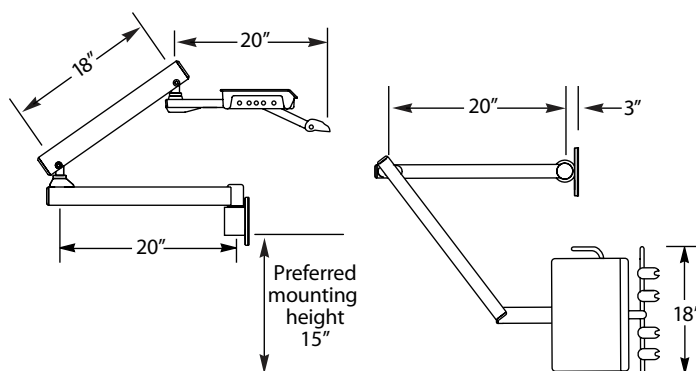


3235 / 3735 CABINET SIDE DELIVERY



3230 / 3730 WALL SIDE DELIVERY

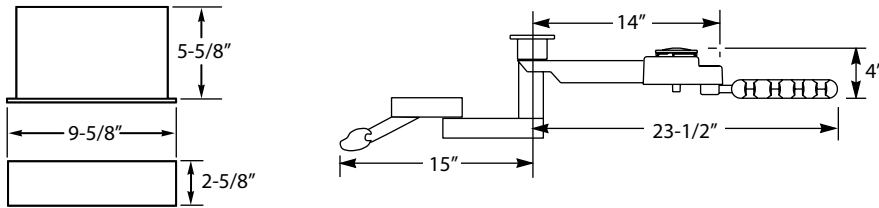
Shown: Standard IC
Not shown: Value = 21"



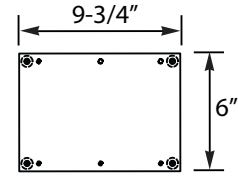
Not shown: Value = 21"
Contoured IC = 19"

General Information (Dimensions)

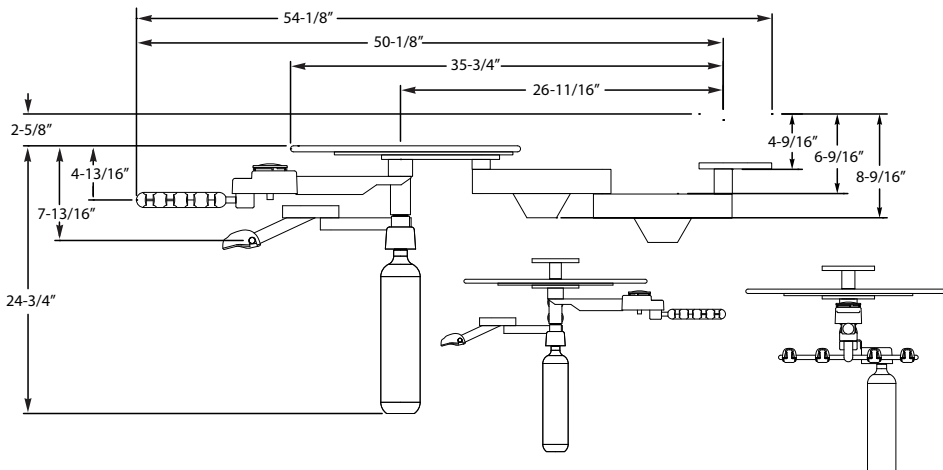
2180 REAR, BENEATH WORK SURFACE



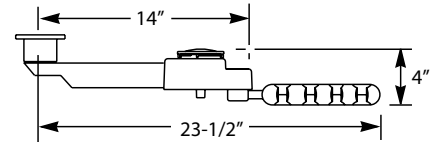
2180 Leveling/Mounting Plate



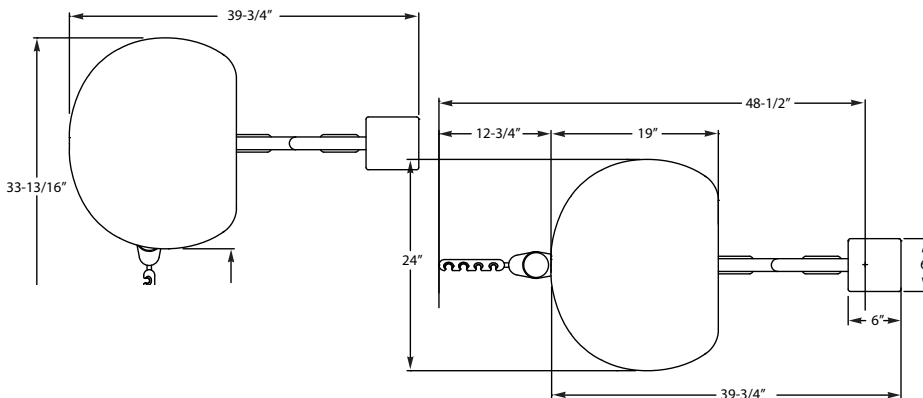
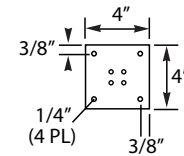
2180 WITH OPTIONAL 0010-652 WORK SURFACE AND 0023-806 ARM



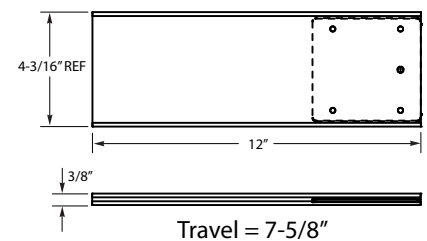
1280 REAR, BENEATH WORK SURFACE



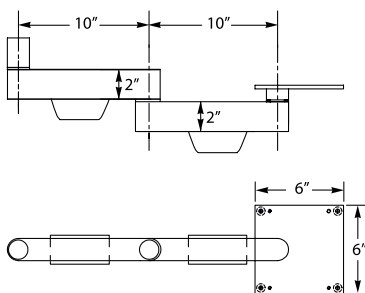
1280 Leveling/Mounting Plate



1700-141 Slide Mount Option



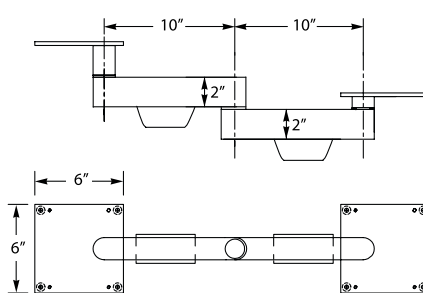
0023-806 Option



Work Surface

Counter

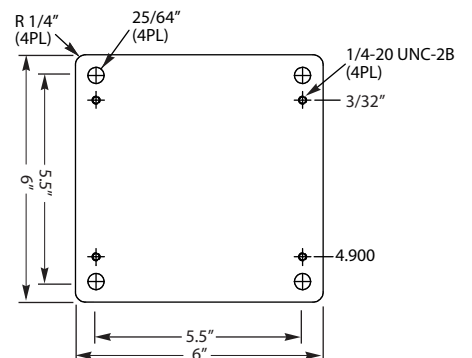
0023-815



Work Surface

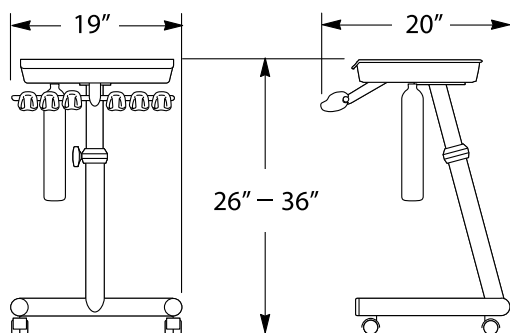
Counter

Cabinet Mounting Plate

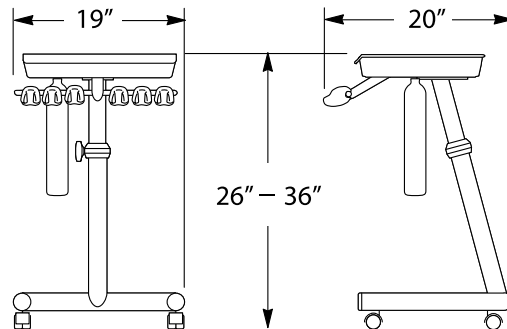


General Information (Dimensions)

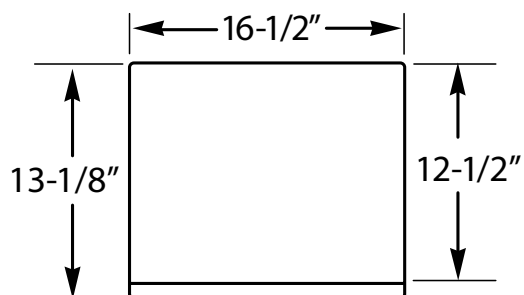
5200 / 5210 / 5400 / 5410 IC CART



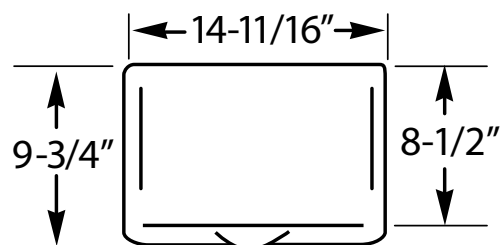
5915 / 5910 VALUE CART



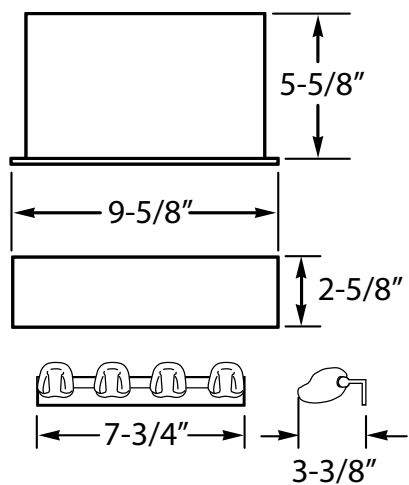
**5200 / 5210 / 5400 / 5410
Work Surface**



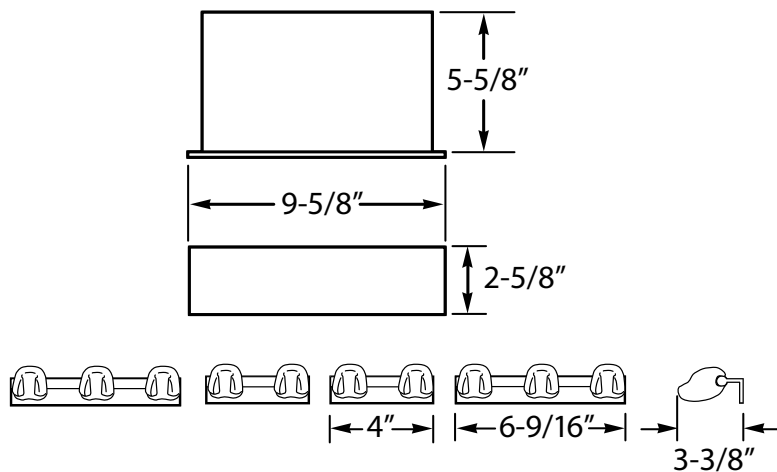
**5915 / 5910 VALUE
Work Surface**



2500 PANEL MOUNT

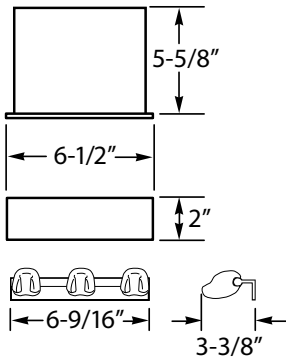


2505 PANEL MOUNT

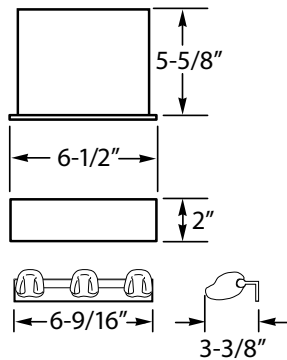


General Information (Dimensions)

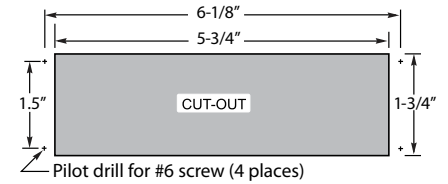
2510 PANEL MOUNT



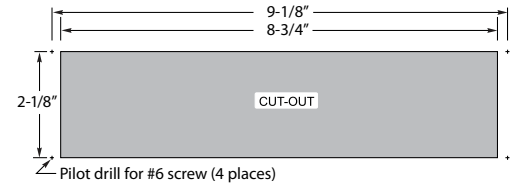
2515 PANEL MOUNT



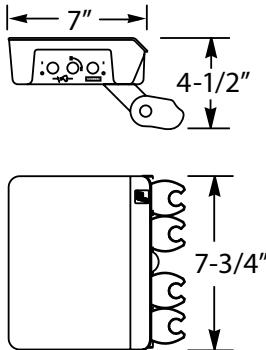
2510 / 2515 Wall cut-out



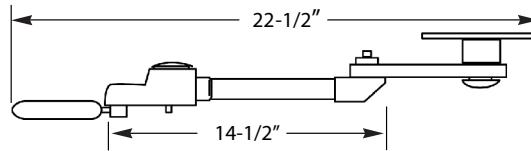
2180 / 2500 / 2505 Wall cut-out



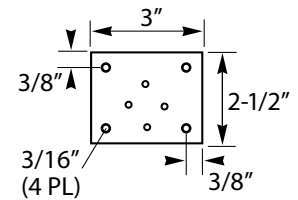
MT600 / MT610 COMPACT CONTROLS



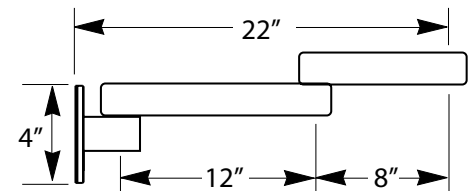
1055 ASSISTANT'S INSTRUMENTATION



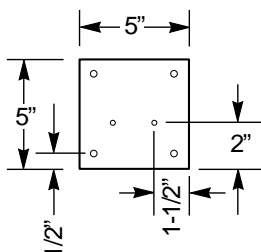
1055 Leveling/Mounting Plate



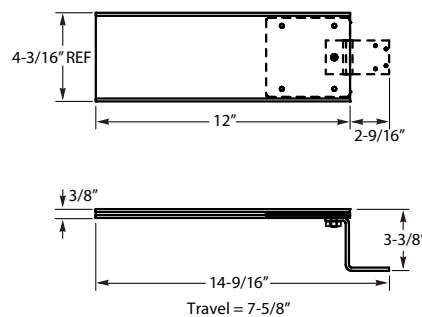
1110-115-CS Folding Arm System Option



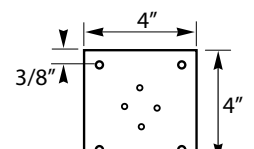
MT600/610BS Leveling/Mounting Plate



1700-140 Slide Mount with Swivel Option



1110-115-CS Leveling/Mounting Plate



General Information (Ordering Guide)

ORDERING: When ordering Forest products, the following information should be included:

QUANTITY	ACCESSORIES OR OPTIONS
MODEL/PART #	DATE REQUIRED
DESCRIPTION	PURCHASE ORDER NUMBER
COLOR	METHOD OF SHIPPING

Deviation from our standard product and Designer Friendly options are subject to an upcharge.

STANDARD LAMINATE WORK SURFACE COLORS

(special laminates: call customer service for pricing and quantity discounts.)

FORMICA:	Almond 920-58	Graphite 837-58	Surf 923-58
	Folkstone 927-58	Oyster Gray 929-58	White Blanc 949-58
WILSONART:	Shadow D96-60		

STANDARD SOLID WORK SURFACE COLORS (same as Modular and Custom Cabinetry)

(Special non-stock solid work surface colors: call customer service for pricing and quantity discounts.)

CORIAN:	Antarctica	Fossil	Blue Pebble
	Doeskin	Savannah	
GIBRALTAR:	Arctic Melange	Frosty White Mirage	Baja Melange
	Northern Melange	Light Beige Melange	Midnight Melange
MEGANITE™:	Moonstone	Goldrush Gemstone	

STANDARD UPHOLSTERY COLORS (Pearlized colors tend to wear similarly to soft leather)

Ultraleather™®:	Baltic	Dove Grey	Raven Wing	Pearlized Green
Tea				
	Charcoal	Grenadine	Sassy	Pearlized Mica
	Diplomat Blue	Papyrus	Stone	Pearlized Mid-
night				
	Doe	Parrot	Walnut	Pearlized
Pewter				
Ultraleather™® “RAFFIA” (upcharge):	Durango Dust	Noche		

DESIGNER FRIENDLY PAINT COLORS

Arctic Silver	Forest Grey	Sage
Bronze	Pearl	Shadow
Charcoal	Pewter	White

DESIGNER FRIENDLY PLASTIC COLORS

Solid Colors:	Forest Grey	White	
Carbon Fiber Patterns:	Greywood	Lemans	Laser Leather

STOOL PLASTIC COLORS (colors configured by Forest)

Black	Beige
-------	-------

CHROME ACCENTS (\$135 upcharge)

CUSTOM COLORS DEVIATING FROM STANDARD SUBJECT TO A 10%-15% UPCHARGE AND EXTENDED DELIVERY TIME

General Information (Index)

model number + page

model #	page	model #	page	model #	page
1075INT	31	2700INT	60, 61	8500INT	28
1091INT-DURR	27	3000-999-BC	58, 59	8501INT	30
1092INT-DURR	29, 31, 37	3000-999-WM	58, 59	8600INT	26
1095INT	27	3000INT	25	9073INT	32
1280INT	54, 55	3230INT	62, 63	9074C-INT/9074C-T-INT	51
1280INT-DURR	54, 55	3235INT	62, 63	9074W-INT/9074W-T-INT	51
1300RM-INT	33, 41	3486INT	58, 59, 85	9081-C-INT	50
1495INT	20, 21, 85	3486INT-DURR	58, 59	9081INT	32
1576INT	29	3686INT	58, 59, 85	3907-180	14, x
1577INT	29	3686INT-DURR	58, 59	3907-999-DC	14
1578INT-DURR	29	3730INT	64, 65	3907-999-MC	44
1590INT	27	3735INT	64, 65	3907-999-SP	14
1591INT	27, 85	3900INT	14	7000-999-BC	56, 57
1591INT-DURR	27	3901INT	14	7000-999-FM	56, 57
1636INT	31, 77	5200INT	66, 67	7000-999-UC	56, 57
1637INT	77	5210INT	70, 71	7000-999-WM	56, 57
1800INT	20, 21	5400INT	66, 67	MT600-INT	72
2001INT	18, 19	5410INT	70, 71	MT610-INT	72
2002INT	18, 19	5915INT	68, 69	PMT300	76
2003INT	18, 19	6126C	15	PMT350	76
2004INT	20, 21	6137C	15		
2180INT	54, 55	6147C	15		
2180INT-DURR	54, 55	6176	15		
2400INT	60, 61	6187	15		
2500INT	74, 75	7000INT	56, 57		
2510INT	74, 75	7000INT-DURR	56, 57		

part number + page

part #	page	part #	page	part #	page
0008-019	89	0017-850-INT	83	1110-115	89
0010-084-BLK	55, 88	0023-665	88	1115-020	87
0010-086-BLK	55, 88	0024-114	68	1115-315-CS	89
0010-310	80	0024-180	85	1300-030	88
0010-364	89	0024-181	85	1400-115	87
0014-355	81	0024-191	85	1400-270-CS	83
0014-357	82	0024-205	85	1700-140	87
0014-381	79	0024-215	85	1700-141	87
0014-389	32, 79	1100-341	84	1700-175-INT	84
0016-454-CS	88	1100-342	84	3900-101	86
0016-455-BLK/-G	88	1100-343	84	3900-200	81
0016-456-BLK/-G	88	1100-423	83	AIRTECH-P/AIRTECH-S	80
0016-469	84	1100-505	84	BEIN-MX2-INT	79
0017-450-INT	82	1100-510	84	BIEN-MCX-INT	80
0017-603-GRY	82	1100-525	84	SAT-S-INT	81
0017-614-INT	82	1105-106-INT	86	SAT-S-LED-INT	81
0017-693-INT	82	1107-086	83	0023-806	55, 88